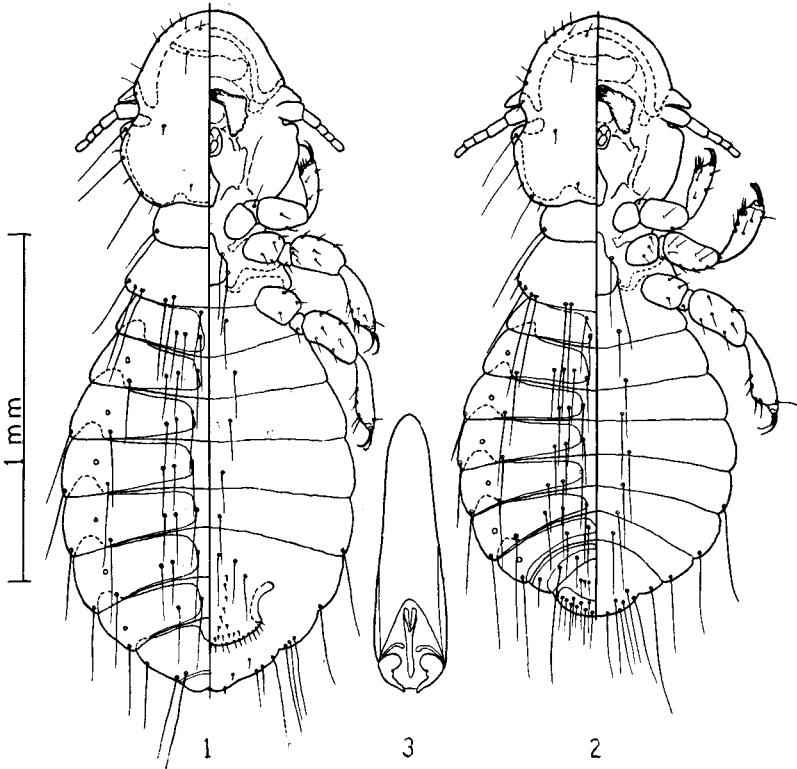


NOTES ON *LAGOPOECUS SINENSIS* (SUGIMOTO) (Phloptoridae, Mallophaga)

K. C. EMERSON
Stillwater, Oklahoma

Lagopoecus sinensis (Sugimoto), 1930, was described from specimens that had been collected from the domestic chicken. The host was from Wenchow, South China. Since the original description, there has been no recorded collection of this parasite. It has been generally considered that the chicken was not the true host. For that reason, the species was not included in a recent review of the Mallophaga occurring on the domestic chicken. Recently, the United States National Museum acquired a collection of Mallophaga which contained a good series of *Lagopoecus sinensis* (Sugimoto). The specimens were collected from the head and neck of domestic chickens in the vicinity of Shanghai, China, in 1939. The size of the series indicates that the chicken is probably the true host. The specimens agree with Sugimoto's photographs, and with his drawings except for his figure 4. In figure



Lagopoecus sinensis (Sugimoto)

1. Dorsal-ventral view of female. 2. Dorsal-ventral view of male. 3. Male genitalia.

4, Sugimoto apparently included the ventral abdominal chaetotaxy with the dorsal chaetotaxy. Illustrations of the specimens are included as figures 1-3. Figures 1 and 2 are drawn to the same scale.

REFERENCES CITED

- Emerson, K. C. 1956. Mallophaga (Chewing Lice) occurring on the domestic chicken. *Jour. Kansas Ent. Soc.* 29:63-79.
- Sugimoto, M. 1930. On some Mallophaga from domestic fowls of Chinese provenience. *J. Soc. Trop. Agric. Taiwan*, 2:129-133.
-