

MALLOPHAGA (Chewing Lice) OCCURRING ON THE TURKEY

K. C. EMERSON
Stillwater, Oklahoma

In an earlier paper, all species of Mallophaga known to occur on the domestic chicken were illustrated. The purpose of this paper is to do likewise for the species known to occur on the turkey in North America (north of Mexico). Published records of species of Mallophaga found on the turkey are generally more reliable than the older records of Mallophaga published for the chicken. References listed in the discussion of each species are primarily taxonomic.

Key To The Species

1. Maxillary palpi present; forehead armed ventrally with a pair of spinelike processes *Menacanthus stramineus* (N.)
Maxillary palpi wanting; forehead without ventral spinelike processes 2
2. Head width greater than length; and with expanded angular temples *Chelopistes meleagridis* (L.)
Head length greater than width, and with normal rounded temples .. 3
3. Paramera of male genitalia broadly curved inward; posterior margin of female vulva wide and with normal later margins
..... *Oxylipeurus polytrapezius polytrapezius* (B.)
Paramera of male genitalia curved outward; posterior margin of female vulva narrow and flanked laterally by large dark-colored oval-shaped internal structures *Oxylipeurus corpulentus* C.

SUBORDER AMBLYCERA

Menacanthus stramineus (Nitzsch)

(Figs. 1-3)

Pediculus meleagridis Panzer, 1793 (*nec* Linnaeus, 1758). Faun. Ins. Germ.:51, fig. 20.

Liotheum (*Menopon*) *stramineum* Nitzsch, 1818. Germar's Mag. Ent. 3:300 (*Nomen novum* for *Pediculus meleagridis* Panzer).

Menopon biserialatum Piaget, 1880. Les Pédiculines :460, pl. 37, fig. 2.

Zemiodes zumpti Eichler, 1944. Zeit. hyg. Zool. 35:172, fig.

Menacanthus stramineus (Nitzsch), Hopkins and Clay, 1952. A check list of the genera and species of Mallophaga :125.

Zemiodes zumpti Eichler, Hopkins and Clay, 1952. *Ibid.* :362.

This well known species is common on the domestic chicken and turkey. Domestic guineafowls, peafowls, quails and pheasants hatched under

chickens or maintained in zoological gardens are usually infested. Occasionally individuals may be found on domestic ducks and geese. Specimens have been examined from several subspecies of wild turkeys collected in the United States and Mexico. The species has not been found on other wild hosts, thus indicating that the original host was probably the wild turkey. The species is common throughout the world in regions where the turkey has been introduced. This parasite is presently known as the "chicken body louse."

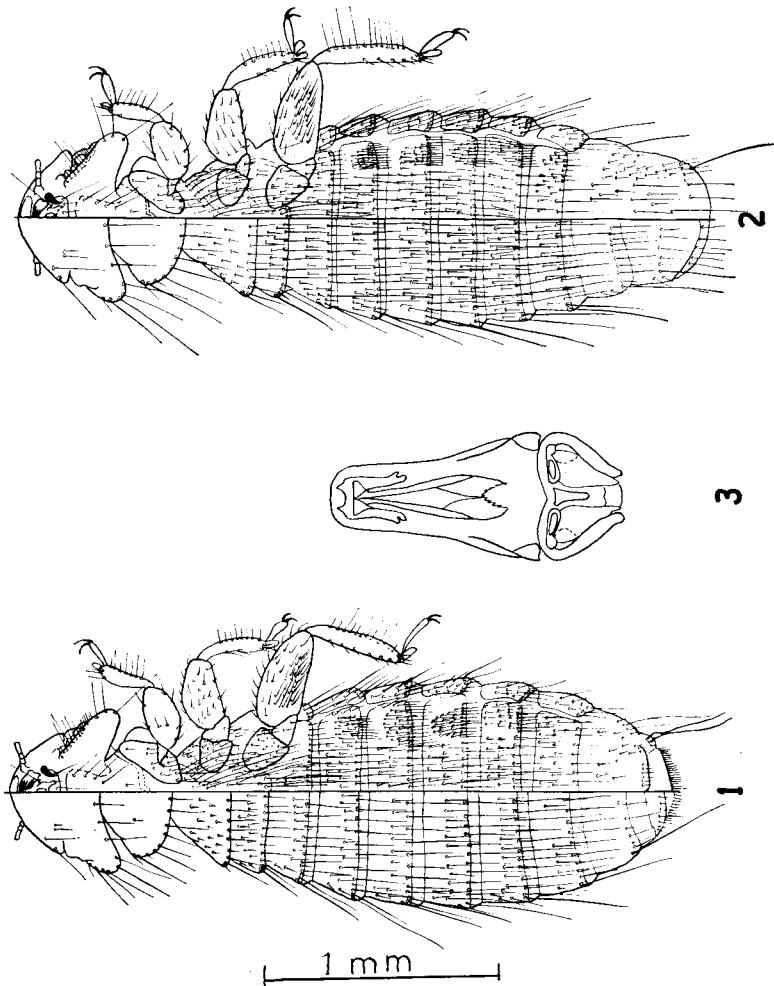


PLATE I

Menacanthus stramineus (Nitzsch) Figures. 1-3. Fig. 1. Dorsal-ventral view of female. Fig. 2. Dorsal-ventral view of male. Fig. 3. Male genitalia.

SUBORDER ISCHNOCERA

Chelopistes meleagridis (Linnaeus)

(Figs. 4-6)

Pediculus meleagridis Linnaeus, 1758. Systema Naturae, Ed. X. 1:613.*Philopterus (Goniodes) stylifer* Nitzsch, 1818. Germar's Mag. Ent. 3:294.*Rhopaloceras styliferum* Taschenberg, 1882. Nova Acta Leop.-Carol. 44:47.*Chelopistes meleagridis* (Linnaeus) Keler, 1939. Nova Acta Leop.-Carol. (N.F.) 8:181.*Virgula meleagridis* (Linnaeus) Clay, 1941. Parasitology 33:120.*Chelopistes meleagridis* (Linnaeus) Hopkins and Clay, 1952. A check list of the genera and species of Mallophaga :69.

In addition to the major taxonomic references listed above, economic entomology papers are replete with references to this species. It is common on both the domestic and wild turkey, and on the domestic turkey is found world-wide. Clay records the species from *Agriocharis ocellata* (Cuvier), the Ocellated Turkey, found in southern Mexico.

In North America (north of Mexico) there is no known species of Mallophaga that might be confused with this form. Even within the genus, the shape of the head is distinctive. This parasite is presently known as the "large turkey louse."

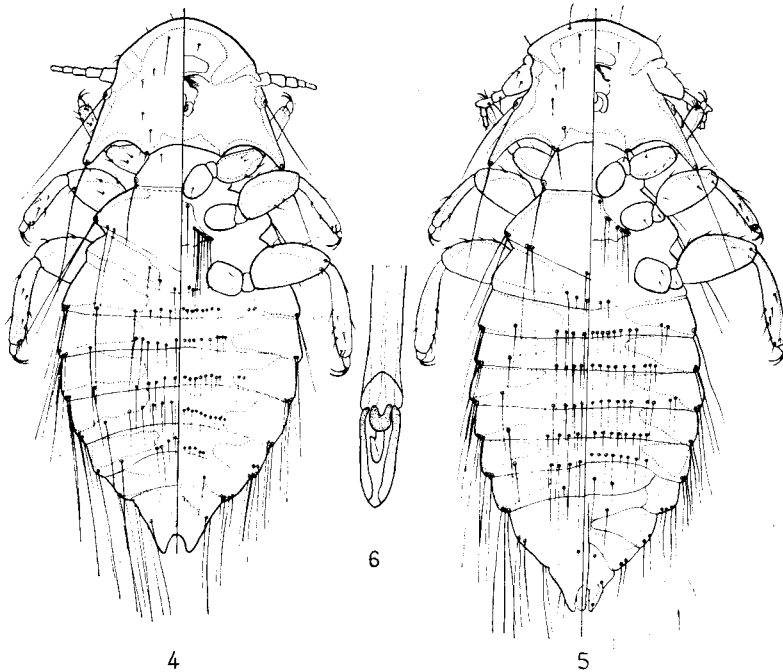


PLATE II

Chelopistes meleagridis (Linnaeus) Figures 4-6. Fig. 4. Dorsal-ventral view of female. Fig. 5. Dorsal-ventral view of male. Fig. 6. Male genitalia.

Oxylipeurus corpulentus Clay

(Figs. 7-9)

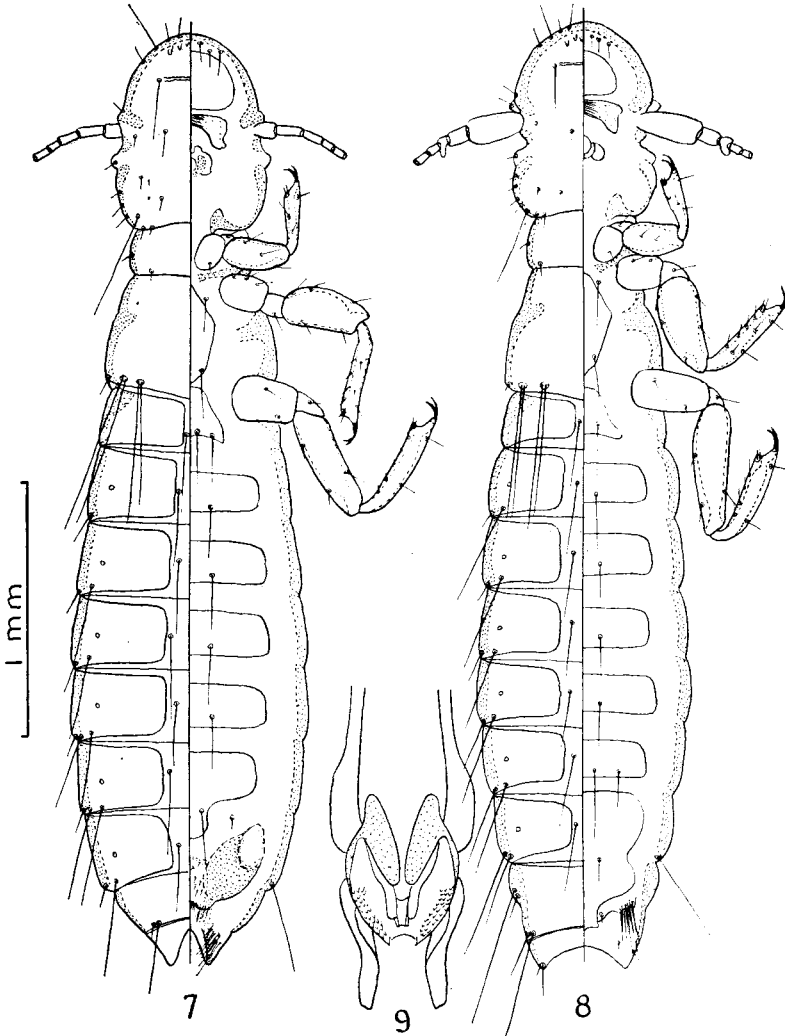
Oxylipeurus corpulentus Clay, 1938. Proc. Zool. Soc. Lond. (B) 108:183.*Oxylipeurus corpulentus* Clay. Hopkins and Clay, 1952. A check list of the genera and species of Mallophaga: 256.*Oxylipeurus corpulentus* Clay. Keler, 1958. Dtsch. Ent. Zeit. (N.F.) 5:312.

PLATE III

Oxylipeurus corpulentus Clay. Figures 7-9. Fig. 7. Dorsal-ventral view of female. Fig. 8. Dorsal-ventral view of male. Fig. 9. Male genitalia.

As may be seen by comparing Figures 7-9 with Figures 10-12, this species resembles closely a more common parasite of the turkey. For this reason published records have been limited to taxonomic papers. To date, I have seen specimens, but never in great numbers, from wild turkeys in Oklahoma, Texas, Georgia, South Carolina, and North Carolina. It has

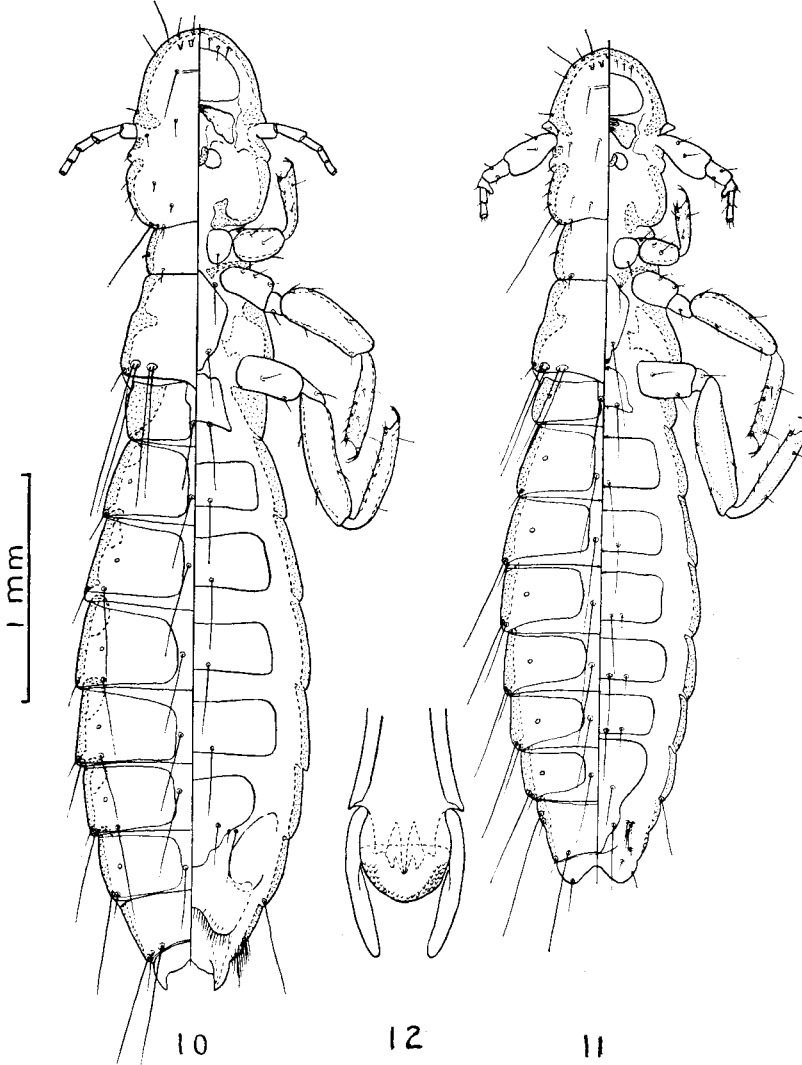


PLATE IV

Oxylipeurus polytrapezius polytrapezius (Burmeister) Figures 10, 12. Fig. 10. Dorsal-ventral view of female. Fig. 11. Dorsal-ventral view of male. Fig. 12. Male genitalia.

not been recorded from the domestic turkey. I suspect that some published records of *Oxylipeurus polytrapezius polytrapezius* (B.) include this species, since in many areas domestic turkeys often range with wild flocks.

Oxylipeurus polytrapezius polytrapezius (Burmeister)

(Figs. 10-12)

Lipeurus polytrapezius Burmeister, 1838. Handb. Ent., 2:434.

Lipeurus gallipavonis (Geoffroy) Harrison, 1916. Parasitology 9:83.

Oxylipeurus polytrapezius polytrapezius (Burmeister) Clay, 1938. Proc. Zool. Soc. Lond. (B) 108:181.

Oxylipeurus polytrapezius polytrapezius (Burmeister) Clay and Hopkins, 1950. Bull. BM(NH), Ent. 1:271.

Oxylipeurus polytrapezius (Burmeister) Hopkins and Clay, 1952. A check list of the genera and species of Mallophaga :259.

Oxylipeurus polytrapezius (Burmeister) Keler, 1958. Dtsch. Ent. Zeit. (N.F.) 5:312.

This species is a common parasite on both domestic and wild turkeys, and appears to have the same world-wide distribution as the first named host.

In North America (north of Mexico), this species resembles only the previously mentioned *Oxylipeurus corpulentus* Clay. *Oxylipeurus polytrapezius agriocharis* Clay, 1938, a more closely related form, is known only from *Agriocharis ocellata* (Cuvier), the Ocellated Turkey, found in southern Mexico. This parasite is presently known as the "slender turkey louse."

LITERATURE CITED

- Burmeister, H. C. C. 1838. Handbuch der Entomologie, II. Berlin.
- Clay, T. 1938. Revision of the genera and species of Mallophaga occurring on Gallinaceous Hosts.—Part I. *Lipeurus* and related genera. Proc. Zool. Soc. London, Ser. B. 108: 109-204.
- 1941. A new genus and species of Mallophaga. Parasitology 33:119-129.
- and G. H. E. Hopkins. 1950. The early literature on Mallophaga. Part I, 1758-62. Bull. British Museum (NH), Ent. 1:223-272.
- Eichler, W. 1944. *Zemiodes zumpti* nov. gen. et. eine eigentümliche neue Mallophage vom Haushuhn. Zeit. hyg. Zool. 35:171-173.
- Emerson, K. C. 1956. Mallophaga (Chewing lice) occurring on the domestic chicken. J. Kans. Ent. Soc. 29:63-79.
- Harrison, L. 1916. The genera and species of Mallophaga. Parasitology 9:1-156.
- Hopkins, G. H. E. and T. Clay. 1952. A check list of the genera and species of Mallophaga. British Museum (NH), London.
- Keler, S. 1939. Baustoffe zu einer Monographie der Mallophagen. II. Teil: Überfamilie Nirmoidea. Nova Acta-Leop.-Carol. (N.F.) 8:1-254.
- 1958. The genera *Oxylipeurus* Mjöberg and *Splendoroffula* Clay and Meinertzhagen. Dtsch. Ent. Zeit. (N.F.) 5:299-362.
- Linnaeus, C. 1758. Systema Naturae, 10th Edition. Stockholm.
- Nitzsch, C. L. 1818. Die Familien und Gattungen der Thierinsekten. Germar's Mag. Ent. 3:261-316.
- Panzer, D. G. F. W. 1816. De vegetativis et animatis corporibus in corporibus animatis referendis commentarius. Berlin.
- Piaget, E. 1880. Les Pediculines, Essai Monographique. Leyden.
- Taschenberg, O. 1882. Die Mallophagen, mit besonderer Berücksichtigung der von Dr. Mayer gesammelten Arten systematisch bearbeitet. Nova Acta Acad. Caes. Leop. Carol. 44:1-244.

Reprinted from the

JOURNAL OF THE KANSAS ENTOMOLOGICAL SOCIETY

Vol. 35, January, 1962, No. 1

**MALLOPHAGA (Chewing Lice) OCCURRING ON
THE TURKEY**

K. C. EMERSON
Stillwater, Oklahoma