

A NEW SPECIES OF THE GENUS DOCOPHORULUS EICHLER, 1944 (MALLOPHAGA, PHILOPTERIDAE) FROM THE WHITE-WINGED CROSSBILL LOXIA LEUCOPTERA BIFASCIATA, BREHM

V. EYKHLER AND T.T. VASYUKOVA (EICHLER & VASSJUKOVA)

The best studied species-complex of Mallophaga is that on *Loxia curvirostra curvirostra* L. The following Mallophaga have been found on birds of this species: *Docophorus curvirostrae* Schrank, 1776; *Myrsidea (Liquidea) quadrimaculata* Carter, 1902; and *Nigronirmus limbatus limbatus* Burmeister, 1838.

Nigronirmus limbatus propinquus Giebel, 1874 has been found on *Loxia pityopsittacus* Borkh. and *Docophorus curvirostrae* has been recorded in Finland on *Loxia leucoptera* Gm. (Eichler and Hackmann, 1973).

In Yakutia *L. leucoptera* penetrates northward sporadically as far as the 68th parallel, but is especially widespread in its southern parts (Vorob'yev, 1963). Two males of a species of *Docophorus* were taken from a single bird from the southwestern part of the republic. These specimens are close to *Docophorus curvirostrae*, but they differ in several morphological characters from that species and represents a new species which we describe below.

Docophorus hansmuenchi Eichler et Vassjukova, sp. n.

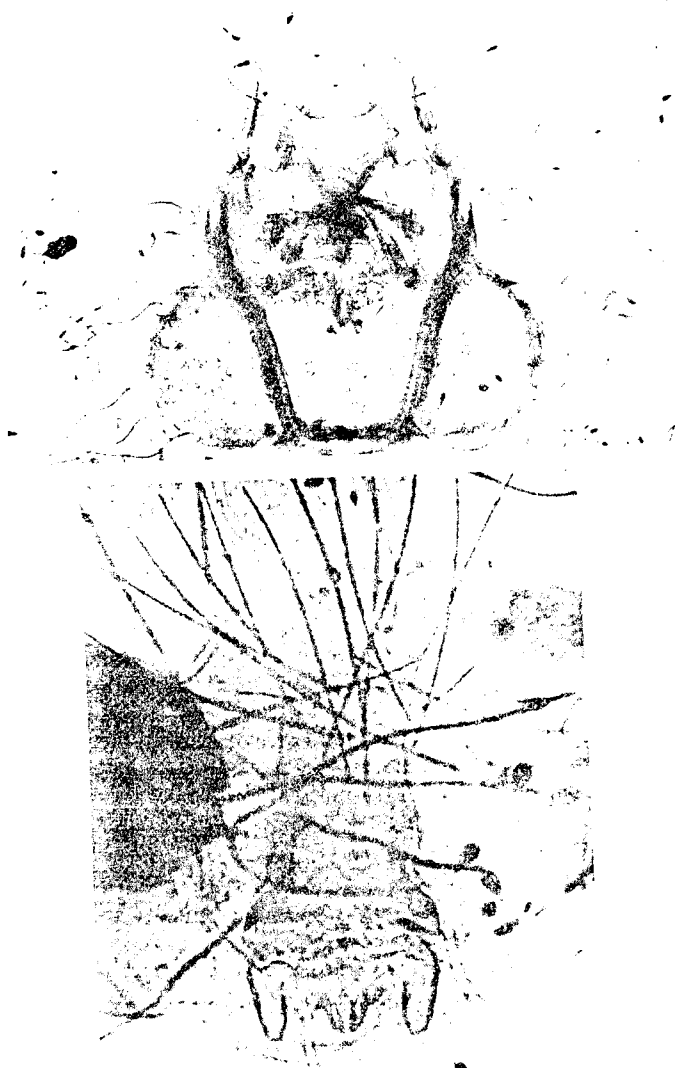
Male. Differs as follows from *D. curvirostrae*: anterior part of head shorter and broader (Fig. 1), lateral sides of prothorax more rounded, posterolateral corner of mesothorax more or less pointed. Basal plate of genital apparatus weakly broadened above and, evidently, below (Fig. 2).

Dimensions of some parts of the body of *Docophorus*

Part of body	Dimension (mm)	<i>D. hansmuenchi</i> sp. n. *	<i>D. curvirostrae</i> **
Head	Length	0.52	0.52
	Width	0.5	0.5
	Index	1.04	1.04
Prothorax	Width	0.3	0.275
Mesothorax	Width	0.473	0.45
Body	Length	1.74	1.57

*Preparation No. 40, 5.IV.1978, Batamay Settlement, Lensk District, Yakut Auton. SSR. **Preparation No. 231 from Univ. of Berlin.

*Editor's note. The trinomial for the bird is given only in the title; in the text it is referred to only by the Russian vernacular name. *Loxia leucoptera* is cited only by that binomial in A.N. Ivanov's Catalogue of the Birds of the USSR (1976).



2

Fig. 1-2. *Docophorulus hansmuenchi*, sp. n., male.

1 - head; 2 - genitalia.

Dimensions of the described species and the species compared with it are given in the table.

The species is named after the ornithologist Hans Muench, of the German Democratic Republic, in token of his having prepared a monograph of the birds of the genus *Loxia* (Muench, 1980).

Material. 2 ♂ collected from 1 *Loxia leucoptera*, 5.IV.1978, at Batamay Settlement, Lensk District, Yakut Auton, SSR, by T.T. Vasyukova. The holotype and paratype are deposited in the Mallophaga collection of the Zoological Institute of the Academy of Sciences of the USSR (Leningrad).

LITERATURE CITED

- CHLER, W., and W. HACKMANN. 1973. Finnische Mallophagen. i. Geschichtliche Ueberblick über die Mallphagenforschung in Finnland, Enumeratio Mallophagorum Fenniae, Bibliographie der gesamten finnischen Mallophagenliteratur. Luonai-Hämeen Luonto (Frossa) 46 : 78-104.
- TENCH, H. 1980. Die Kreuzschnäbel (Gattung *Loxia*). Wittenberg-Lutherstadt: A Ziemsen Verlag (Neue Brehm-Bücherei).
- PROB'YEV, K. 1963. Birds of Yakutia. (In Russ.). Moscow: Acad. Sci. USSR. 335 p.

Humboldt University Museum
Berlin, German Democratic Republic

Institute of Biology
Yakut Branch, Siberian Section
Academy of Science of USSR
Yakutsk