

## MALLOPHAGA FROM BIRDS AT LAGUNA BEACH, CALIFORNIA

JOHN H. PAINE  
STANFORD UNIVERSITY. CALIFORNIA

The following list of determinations, with one new species, was made from material collected at Laguna Beach, California, by Mr. Leon Gardner.

### *Docophorus communis* Nitzsch

A number of specimens from *Zamelodia melanocephala*, the Black-headed Grosbeak.

### *Docophorus lari* Denny

Two specimens from *Larus occidentalis*, the common Western Herring Gull.

### *Docophorus excisus* var. *major* Kellogg

One female of this species, with its curiously incised clypeus, from *Petrochelidon lunifrons*, the Cliff Swallow.

### *Nirmus foedus* Kellogg and Chapman

Specimens from *Zenaidura macroura*, *Sayornis nigricans semiatra* and *Tyrannus verticalis*.

### *Nirmus splendidus* Kellogg

A number of specimens from the California Thrasher, *Toxostoma redivivum*, and from the Roadrunner, *Geococcyx californianus*.

### *Nirmus maritimus* Kellogg and Chapman

A large number of specimens from *Ptychoramphus aleuticus*, the Cassin Auklet.

### *Nirmus fuscus* Nitsch

Two individuals from a Sparrow Hawk (*Falco sparverius deserticola*).

### *Nirmus longus* Kellogg

Six specimens from *Petrochelidon lunifrons*.

### *Lipeurus baculoides* n. sp.

(Figure 95)

Numerous males and females from the mourning dove, *Zenaidura macroura*. This species resembles *L. baculus*, the common parasite of pigeons, possessing the two modified hairs on the clypeus, a char-

acteristic of *L. baculus*. However, the male antennæ differ markedly in the new species, which is also much smaller, with shorter abdomen.

Description of male: color pale with chestnut and black markings; head resembling *L. baculus*, but with broader, rounded temples; two peculiarly flattened, modified hairs on the clypeus. Length of segments of antennæ similar to those in female, excepting second which is slightly longer; third segment with slight indication of an appendage. (Figure 95 D and E).

Thorax pale in color with dark, often black, markings. Abdomen elongate, shorter and broader than in *L. baculus* with pale median blotches and dark lateral bands. Last segment consisting of two rounded lobes; last segment in the female formed of two larger triangular lobes.

	MALE		FEMALE	
	Length	Width	Length	Width
Body .....	2.06		2.24	
Head .....	.52	.30	.56	.32
Thorax .....	.38	.28	.38	.30
Abdomen .....	1.16	.36	1.30	.40

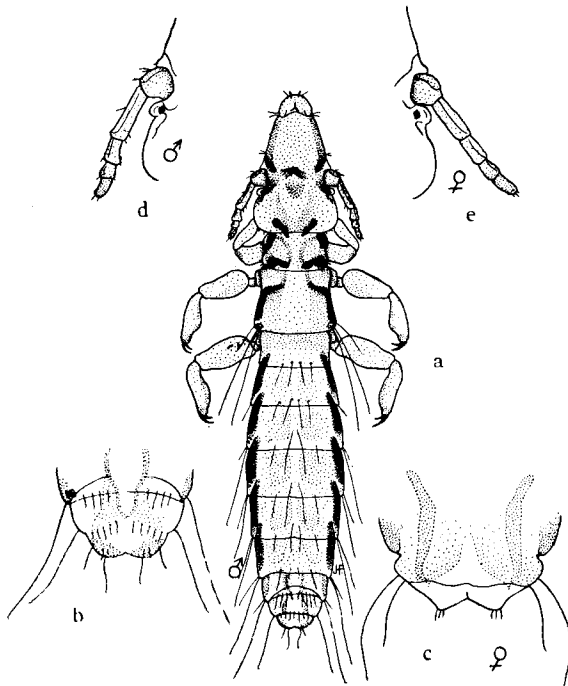


Figure 95. *Lipeurus baculoides* Paine

A, Adult male. B, posterior segments of male. C, Posterior segments of female. D, Antenna of male. E, Antenna of female.

**Colpocephalum timidum** Kellogg

Numerous specimens from *Limosa fedoa*, the Marbled Godwit.

**Colpocephalum kelloggi** Osborn

One male from a buzzard (*Cathartes aurea*), Aliso Canyon.

**Menopon malleus** Nitzsch

One female specimen of this rather rare species from the Cliff Swallow (*Petrochelidon lunifrons*.)

**Menopon dissimile** Kellogg

Two specimens also from the Cliff Swallow (*Petrochelidon lunifrons*).

**Menopon alternatum** Osborn

A small number collected from a buzzard (*Cathartes aurea*), Aliso Canyon.

**Menopon funereum** Kellogg and Chapman

Three specimens from *Aphelocoma californica*, the California Jay.