

PROCEEDINGS  
OF THE  
BIOLOGICAL SOCIETY OF WASHINGTON

---

A NEW SPECIES OF *KURODAIA* (MALLOPHAGA:  
AMBLYCERA) FROM THE COLLARED SCOPS  
OWL OF THAILAND

By ROBERT E. ELBEL AND K. C. EMERSON

*Department of Zoology, University of Oklahoma, Norman,  
Oklahoma and Stillwater, Oklahoma*

Scops Owls and Screech Owls are parasitized by the mallophagen genera *Kurodaia* and *Strigiphilus*. Species of both genera are found on other hosts of the Avian order Strigiformes. *Kurodaia painei* (McGregor, 1912) and *Strigiphilus otus* Emerson, 1955, are found on the Screech Owl, *Otus asio* (Linnaeus). *Strigiphilus heterogenitalis* Emerson and Elbel, 1957, was described from the Collared Scops Owl, *Otus bakkamoena lettia* (Hodgson). The fact that the *Kurodaia* from the latter host was new, has been mentioned previously by the authors (1959) in a discussion of the taxonomic position of the Collared Scops Owl as indicated by the Mallophaga. The new species of *Kurodaia* is herewith described and illustrated from material collected by Robert E. Elbel, while he was assigned to the United States Operations Mission to Thailand. The skins of the host are in the U. S. National Museum and were identified by H. G. Deignan. Appreciation is expressed to John S. Wiseman and the Texas State Department of Health for the loan of specimens of *Kurodaia painei*.

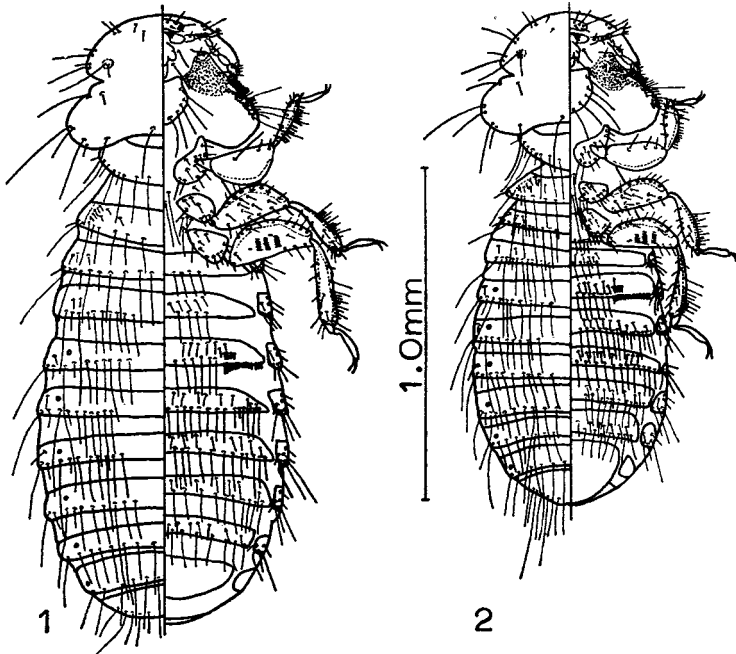
***Kurodaia deignani*, new species**

*Holotype male*: General shape and chaetotaxy as shown in Figure 2. Ventral chaetotaxy of terminal abdominal segments as shown in Figure 5. Genitalia as shown in Figure 7.

*Allotype female*: General shape and chaetotaxy as shown in Figure 1. Ventral chaetotaxy of terminal abdominal segments as shown in Figure 3.

*Type host*: *Otus bakkamoena lettia* (Hodgson).

*Type material*: Holotype male and allotype female, collected at Ban



FIGS. 1-2

Muang Khai, Tha Li, Loei, Thailand on 29 January 1955 by Robert E. Elbel, have been deposited in the U. S. National Museum. Paratypes: 4 males and 3 females, from the type host, were collected at Ban Thung Chuak, Salok Bat, Khanu, Kamphaeng Phet, Thailand, on 22 June 1953 by Robert E. Elbel, of which 2 males and 1 female were deposited in the U. S. National Museum and a pair each in the collections of the authors.

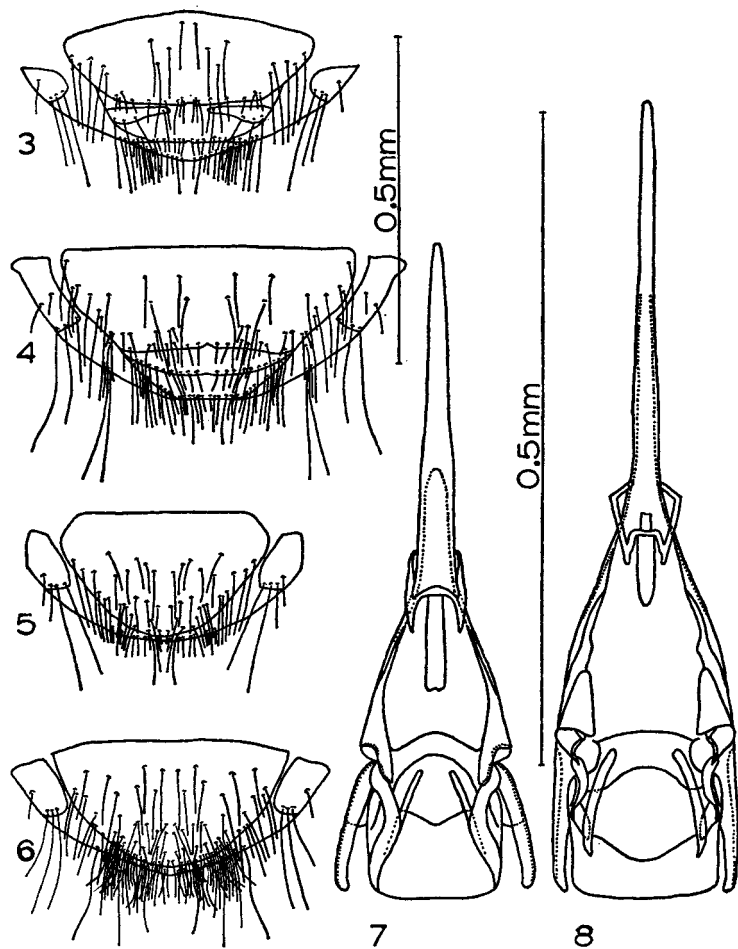
Measurements of *K. deignani*

	HOLOTYPE MALE (mm)	ALLOTYPE FEMALE (mm)
Length of head	0.34	0.37
Width of head	0.54	0.59
Width of prothorax	0.33	0.39
Width of mesothorax	0.41	0.50
Width of abdomen	0.59	0.71
Total length	1.46	1.86

*Discussion:* *Kurodaia deignani* differs from *K. painei* (McGregor) in size, chaetotaxy of terminal abdominal segments, and structure of the male genitalia. *K. deignani*, especially the male, is smaller than *K. painei*.

Measurements of *K. painei*

	MALE (mm)	FEMALE (mm)
Length of head	0.40	0.40
Width of head	0.64	0.64
Width of prothorax	0.41	0.45
Width of mesothorax	0.49	0.54
Width of abdomen	0.69	0.80
Total length	1.71	1.97



Figs. 3-8

These measurements are greater than those given by McGregor in his original description. Differences in chaetotaxy of terminal abdominal segments are apparent from a comparison of Figures 3 and 5 for *K. deignani* with Figures 4 and 6 for *K. painei*. Differences in the male genitalia between *K. deignani* and *K. painei* may be seen by comparing Figures 7 and 8. The measurements and illustrations of *K. painei* are from specimens in the Texas State Department of Health, collected from *Otus asio* in Travis County, Texas, on 5 April 1951 and Zavalla County, Texas, on 25 April 1951 by Johnson and Walker. *Kurodaia deignani* is named for H. G. Deignan, who considered the evidence from the Mallophaga to help determine that the American and Asian forms of *Otus* were not conspecific (Elbel and Emerson, 1959).

## LITERATURE CITED

- Elbel, Robert E. and K. C. Emerson. 1959. The taxonomic position of an Asiatic species of *Otus* (Aves: Strigiformes) as indicated by the Mallophaga. *Proc. Oklahoma Acad. Sci.* 39: 76-78.
- Emerson, K. C. 1955. A new mallophagan from the Screech Owl (Philopteridae). *Proc. Ent. Soc. Washington* 57: 241-242.
- Emerson, K. C. and Robert E. Elbel. 1957. New species and records of *Strigiphilus* (Philopteridae: Mallophaga) from Thailand. *Proc. Biol. Soc. Washington* 70: 195-200.
- McGregor, E. A. 1912. A new Mallophagan. *Ent. News* 23: 305-306.

## EXPLANATION OF FIGURES

*Kurodaia deignani*, new species. Fig. 1.—Dorsal-ventral view of female. Fig. 2.—Dorsal-ventral view of male. Fig. 3.—Ventral view of terminal abdominal segments, female. Fig. 5.—Ventral view of terminal abdominal segments, male. Fig. 7.—Male genitalia.

*Kurodaia painei* (McGregor, 1912). Fig. 4.—Ventral view of terminal abdominal segments, female. Fig. 6.—Ventral view of terminal abdominal segments, male. Fig. 8.—Male genitalia.

Illustrations of similar structures are drawn to the same scale.