

A gynandromorph of *Oxylipeurus mesopelios* (Nitzsch) (Mallophaga) from *Phasianus colchicus* L.

By BENGT NILSSON

In Mallophaga only a few gynanders are known at present. The first investigators who discovered and described gynandromorphism in featherlice were Sikora and Eichler (1941). On a pigeon they found an individual of *Columbicola columbae columbae* L. which shows both male and female characters. Its antennae are very similar to those of an ordinary male whereas the genital region shows female characteristics. Even the inner organization of the genital apparatus seems to be entirely female. The size is something between the size of a male and a female. Later, Eichler (1952) described two further gynanders in a material of *Columbicola pseudolipeurusque* Eichler from *Columbina picui* (Temminck).

During the examination of featherlice from a pheasant shot in the southern part of Sweden, the single individual of *Oxylipeurus mesopelios* (Nitzsch) that was found turned out to be a gynandromorph (Fig. 1 a). The antennae of *O. mesopelios* are sexually dimorphic. The gynander has male antennae. The structures and the chaetotaxy of the posterior abdominal segments and of the genital region are female. The headbreadth corresponds to that of the female and the headlength to that of the male with a cephalic index of 0,68. Clay (1938) gives the average cephalic index for an ordinary male 0,62 and for an ordinary female 0,65. The abdomen is somewhat shorter than that of an ordinary female. Fig. 1 b and 1 c depict details of ordinary male and female.

REFERENCES

- CLAY, TH. 1938. A revision of the genera and species of Mallophaga occurring on Gallinaceous hosts. - Part I. Lipeurus and related genera. - Proc. Zool. Soc. London B 108.
EICHLER, WD. 1952. Mallophagen-Synopsis. XXI. Genus *Columbicola*. - Zool. Anz. 148. Leipzig.
HOPKINS, G. H. E. & CLAY, TH. 1952. A checklist of the genera and species of Mallophaga. - London.
SIKORA, H. & EICHLER, WD. 1941. Ein „Zwitter“ beim Taubenfederling *Columbicola c. columbae* L. - Mitt. Dtsch. Ent. Ges. 10. Berlin.

Fig. 1. *Oxylipeurus mesopelios* (Nitzsch) ordinary ♂. - c.

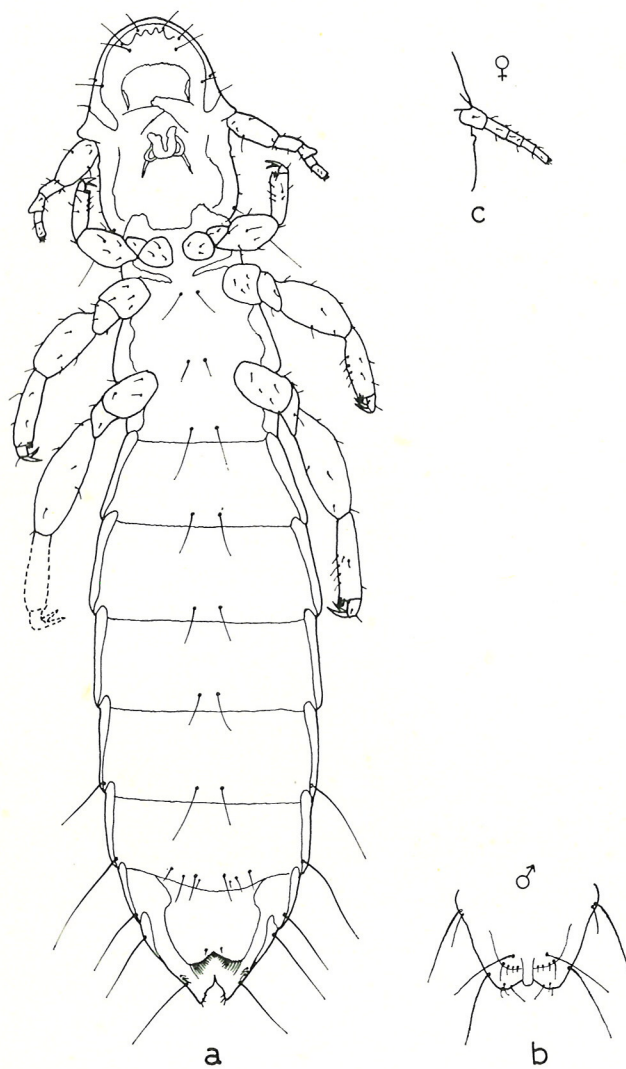


Fig. 1. *Oxylipeurus mesopelios* (Nitzsch). - a. Ventral view of gynandromorph. - b. Apex of ordinary ♂. - c. Antenna of ordinary ♀.