

682

Kans. 3/3/31

Sugimoto, 1929.

Compliments of the Author

ON THE ELEPHANT LOUSE  
(*Haematomyzus elephantis* Piaget, 1880)

M. SUGIMOTO

Reprinted from  
Journal of the Japanese Society of Veterinary Science  
Vol. VIII, No. 4, December, 1929

日本獣医学会雑誌第8巻第4号別刷  
(昭和4年12月)



ザウシラミ (新稱)

(邦文、附英文抄録)

杉本正篤

## ザウシラミ (新稱)

*Haematomyzus elephantis* PIAGET, 1869.

(Le Tijdschrift voor Ent., t. XII, p. 249)

*Haematomyzus proboscideus* PIAGET, 1880.

(Les Fédiculines, p. 658, pl. 54, f. 2.)

*Haematomyzus elephantis sumatranus* FAHRENHOLZ.(through EWING, H. E., *A Manual of External Parasites*, 1929, p. 149.)

杉 本 正 篤

(臺北帝國大學附屬農林專門部)

(昭和4年11月26日受附)

昭和4年1月19日家禽寄生虫採集ノ目的ニテ臺北市圓山動物園ニ赴キン際同園主任獸醫師末永玄吉氏ノ好意ニ依ツテ昨年印度ヨリ直輸入シタル印度象ヨリ雌蟲1個ヲ得タリ象蟲ニ關スル我邦ノ記載ハ余ハ寡聞ニシテ未ダ是アルヲ知ラズ仍テ次ニ小文ヲ記載シテ世ノ同好者ノ參考ニ資セントス

(但シ雄虫ニ關スル記載ハ後日雄虫ヲ得ル迄ノ參考ニト PIAGET ノ記載ヲ轉載シタリ)

本蟲ハ科 *Haematomyzidae* (ENDERLEIN, 1904) 屬 *Haematomyzus* (PIAGET, 1869) Syn. *Idolocoris* (WALKER and RICHTER, 1871); *Phantasmocoris* (WHITE, 1871) ニ屬スルモノニシテ本屬ニハ本種一アルノミナリ

## 記 載

頭部 頭ハ長頸ヲ有スル水瓶ノ形ナリ觸角ノ前方ハ狹ク象鼻ノ如キ長吻トナリテ延長セリ其吻端ハ特異ノ構造ヲ有シ僅ニ膨大シテ茲ニ透明ニシテ牽縮性アル膜ノ縁ニ小鈎ノ1列アリテ此膜ハ凹角ニテ其外部ニ後方ヘ反曲スル帶黑色ノ2個ノ褥ヲ有シ其褥ノ各々ニハ角質ノ疣附著シ之ニ透明ノ細毛繼續ス吻端ノ後位ニ於テ暗色ニシテ運動不在ナル4個 (PIAGET ハ3個) ノ二重ニナレル小鈎ヲ有シ其部ヨリ稍後方ニ暗色ナル2個ノ丈夫ナル亞三角形ノきちん質板ヲ有ス觸角ハ吻ヨリ稍長クシテ毛多生シ第1—第3節ハ前 $\frac{1}{2}$ ノ部ハ狹クナリ其端膨ル第2節ハ後續スル3節ヨリハ稍長ク各節ノ兩側ニハ暗色ノ斑ヲ

有ス但シ第1節ノモノハ其中央切斷セラル眼ハ僅カニ凸出ス顛顛ハ圓クシテ裸出ス後頭ハ胸骨面ニテハ窪ミ背面ニテハ僅カニ隆凸ス頭ノ表面ハ4個ノ菊座南瓜ノ如キ畝 (PIAGET ハ3個ノ畝ト説クモ余ハ前述ヲ正シキモノト認ム) アリ觸角ノ前方及後方ニハ各側ニ於テ2個ノ斑ヲ有ス

胸部 全形ハ雌虫ニ於テハ茶釜ノ如キ形状ヲ呈シ其表面裸出シテ滑カナリ頭ヨリハ幅2倍廣シ前方ニハ截痕アリテ稍狭ク僅カニ着色ス前後胸ハ癒著スレドモ其淡色部ハ前胸ト思ハルル部位ナリ後方ニテ擴ガリテ各側ハ圓ク腹部ノ方ヘハ圓ク凸出シ茲ニ圓味アル2個ノ隆起アリ後縁ニハ邊緣帶ヲ有ス中基節ノ位置ニ氣門ヲ有ス

肢 細長ニシテ前後兩肢ハ胸縁ニ樹立スレドモ中肢ハ稍内方ニ樹立ス基節ハ截頭圓錐形ニシテ半環狀ノ斑ヲ有ス轉節ハ長ク内側膨ル腿節ハ強大ニシテ其端ハ簡單ニ膨レ基部ニテ僅カニ彎曲シ外部ニ3個ノ細毛内部ニ1棘及無色ノ輪ニ依ツテ僅カニ際立テル2斑ヲ有ス脛節ハ薄クシテ甚ダ長ク爪ト對向スル拇指狀ノ突起ナルモノ全然無シ跗節ハ斜ニ且ツ中軸ノ僅カ外側ニテ單節ヲ以テ關節シ中央ニ於ケル無色輪ト2外細毛1内細毛及筋肉ノ聯繫スルきちん質ノ1板ヲ有ス爪ハ比較的丈夫ニシテ彎曲ス中後肢ニ於テハ半透明ニシテ跗節ノ下側ニ連接シテ爪ヨリハ稍長ク且細クシテ爪ト方向ヲ異ニシテ挺出セル突起ノ點付セラルルヲ見ルベシ (第5圖參照) 此肢ノ特異ノ構造ハ PIAGET ハ他種ノ蝨ノ如ク宿主ノ被毛ヲ把握スルコト能ハザルモノナリ

ト説クモ余ハ同感ナリ前肢ハ中後兩肢ヨリ僅カニ短シ

腹部 幅長サニ及バズ卵圓形ニテ側線ハ側帶ノ後方即チ後角ニ各1—2個ノ短毛生ズル外ハ全部裸ナリ第1節ノ背面ニ於テ胸ノ後縁ノ2個ノ隆起ノ後方ニ各2個ノ短毛生ズ弦月狀ノ側帶ハ縫線ノ前方ニテ停止ス6個ノ前位ノ環節ハ楯狀乃至かるたノハ一と形 (PIAGET ハ亞四角形) ノ斑ヲ有シ無色ノ條ニ依ツテ側帶ト分離シ此中間ニ氣門存ス斑ハ邊緣ニ於テ少シク濃色ナレドモ内側ニ進ムニ伴レテ漸次其色淡クナレリ縫線ハ腹節ノ側方ニ於テハ明瞭ナルモノ中央部ハ不明瞭ナリ腹部ノ中央ニ於テハ横ニナレル8個ノ帶アリテ其前位ノ2個ハ暗色ナリ第2位ノモノハ前方ヘ彎曲シテ兩端ハ鋭クナレリ第3位ノモノハ短冊形ナリ雌虫ニ於テハ第7節ハ突然前位ノモノト切離サレ後方ニ

延長シ末節ノ縁ヲ追越スガ如キ恰好ヲナシ中央ニ大ナル1斑ヲ有ス第8節及第9節ハ甚ダ短ク且狭ク後縁ニハ毛生シ且深キ截痕アリ雄虫ニ於テハ腹節ハ小ニシテ其色淡シ第7節ハ他ノモノヨリハ稍長シ

第9節ハ短ク圓味アリテ突然第8節ト切離サル genitalia ハ狹長ニテ外突起ノ端ハ接近シテ丈夫ナル小鈎ヲ以テ終了セリ

兩性ニ於ケル腹面ニハ橢圓形ニテ著色シ離脱シ易キ板ニテ周圍ヲ固定セル上皮ノ瘤ノ中ニ押込マレタル乳頭 (圓形乳頭) ノ8列ヲ有シ内2列ハ胸部ニ6列ハ腹部ニ存ス體側ノ乳頭ハ不規則ニ植立サレ其數稍多シ

胸骨面上ニ於ケル此2列ノ乳頭ハ其兩端接續シ其前列ノモノハ其數9個ニシテ其位置亂レ後列ハ確實ニ列生シ其數18個アリ PIAGET ハ此乳頭ハ吸角ト同様ナル作用ヲナシ宿主體上ニ自由ニ附著シ得ルモノト考ヘ居ルナリ

體ハ灰褐色乃至鮮褐色ニシテ斑ハ夫レヨリ濃色ナリ

計 測 (mm.)

		雌 虫	雄 虫
體	長	2.295 (吻ノ基部迄)	1.7
頭	部 長	0.34	0.55
同	幅	0.459	0.32
胸	部 長	0.374	0.30
同	幅	0.85	0.56
腹	部 長	1.53	0.85
同	幅	1.45 (第4節)	0.78
觸	角	0.714	0.46
	吻	0.595	
後	腿 節	0.391	0.30
後	脛 節	0.425	0.30
後	跗 節	0.289	0.17
卵	長	0.68	
同	厚	0.379	

參考迄ニ科屬ノ標徴ヲ次ニ記ス可シ

*Haematomyzidae* (ENDERLEIN, 1904) 科

標徴 體ノ棘ハ常ニ限定サレタル列ヲナシテ決シテ鱗毛狀ヲ呈セズ頭部ハ嘴管狀ニ長ク突出シ其前端ニロヲ開ク觸角ハ5節ヨリナル脛節ハ爪ト對向セ

ル拇指状ノ突起ヲ有セズ脛節及跗節ハ甚ダ長クシテ薄シ肢ハ宿主ヲ把握スル  
=不適ナリ

*Haematomyzus* (PIAGET, 1869) 屬

標徴 科標徴ト同シ

REFERENCES

1. Castellant, A.,: *Manual of Tropical Medicine*, 1916, p. 753. London.
2. Enderlein, G.,: *Lause-Studien. Über die Morphologie, Klassifikation und Systematische Stellung der Anopluren, nebst Bemerkungen zur Systematik der Insektenordnungen. Zoologischer Anzeiger*, 1904, Bd. 28, Nr. 4.
3. Ewing, H. E.,: *A Manual of External Parasites*, 1929, p. 149. Springfield.
4. Herms, W. B.,: *Medical and Veterinary Entomology*, 1923, p. 71. New York.
5. Kellogg, V. L. and Ferris, G. F.,: *The Anoplura and Mallophaga of North American Mammals*, 1915, p. 7. Stanford.
6. Mense, C.,: *Handbuch der Tropenkrankheiten*, 1934, Bd. 1, s. 78. Leipzig.
7. Piaget, E.,: Description d'un parasite de l'elephant, Avec pl. *Le Tijdschrift voor Ent.*, 1869, t. XII, p. 249.
8. Piaget, E.,: *Les Pédiculines*, 1880, p. 658, pl. 54, f. 2.

圖版説明

Fig. 1 雌虫背面      Fig. 2 雌虫腹面      Fig. 3 吻端  
Fig. 4 後肢      Fig. 5 腹面ノ乳嘴状突起

ON THE ELEPHANT LOUSE

(*Haematomyzus elephantis* PIAGET, 1880.)

MASAATSU SUGIMOTO

(From the Veterinary Laboratory, School of Agriculture and Forestry, Taihoku Imperial University, Formosa).

(Received for publication November 26, 1929)

The author found a female elephant louse on an Indian elephant at Maruyama Zoological Garden in Taihoku last January. That is closely related in most important points to *Haematomyzus*

*elephantis* which was found by Piaget.

Only differences between both specimens are as follows:

1. There are four double hooks on the posterior part of proboscis tip, instead of three in Piaget's specimen.
2. Four ridges are formed lengthwise on the surface of occiput, while Piaget's specimen has three ridges in the same place.
3. There are brownish shieldform or heartshaped blotches along the margins of six anterior segments of the abdomen. Piaget's specimen has subquadrangular blotches.
4. There are eight rows of nipple-like oval process on the ventral surface. The first and second rows are located on the thorax and connect in their both ends. The processes on the first row are nine in number, and on the second row are eighteen.

The measurements of the female are as follows:

Length of body	2.29mm.	Width of abdomen (fourth segment)	1.45mm.
Width of body	1.45	Antenna	0.71
Length of head	0.34	3rd femur	0.39
Width of head	0.46	3rd tibia	0.43
Length of thorax	0.37	3rd tarsus	0.29
Width of thorax	0.85	Length of egg	0.68
Length of abdomen	1.53	Width of egg	0.34

(Author's abstract from his Japanese paper)



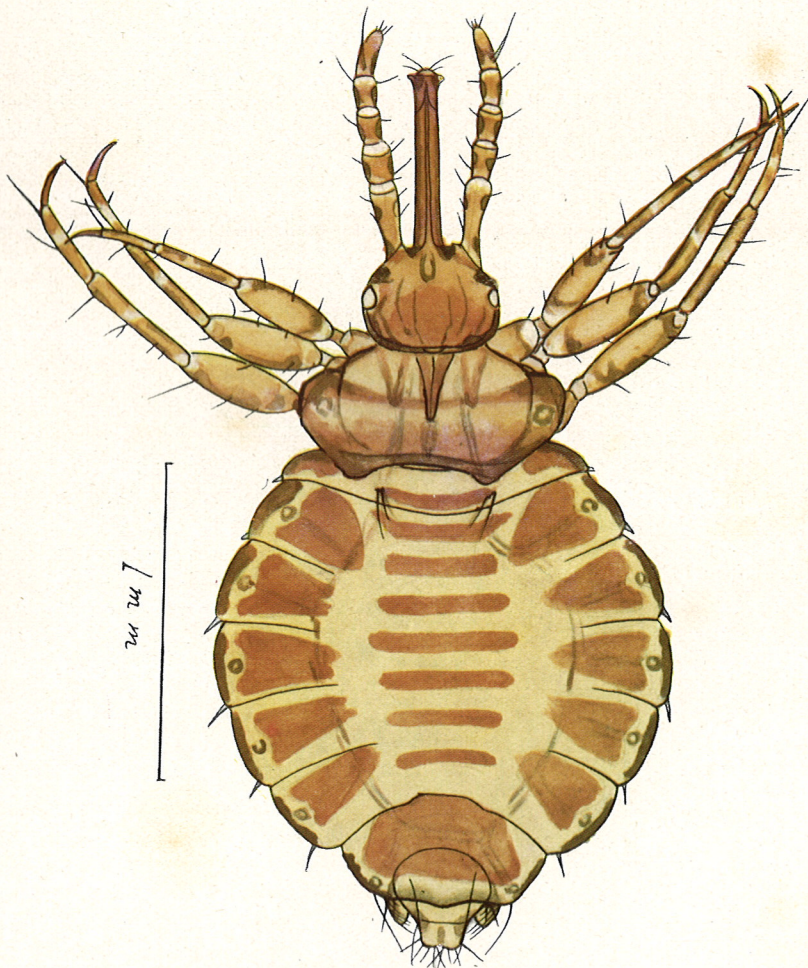


Fig. 1

elephants which was found by  
Only differences between  
1. There are four double  
prophosis lip, instead of three  
2. Four ridges are found  
about, while Fagot's specimen  
3. There are brownish  
along the margin of six anterior  
specimen has subquadrangular  
4. There are eight rows  
ventral surface. The first  
thorax and connect in their  
first row are nine in number

The measurements of

Length of body	2.50 mm
Width of body	1.75
Length of head	0.82
Width of head	0.16
Length of thorax	0.37
Width of thorax	0.85
Length of abdomen	1.83

LOUSE  
1887, 1890  
Agriculture  
1890, 1891  
at louse on an Indian ele  
in Tathoku last January  
at points to *Haematomyia*



Fig. 3

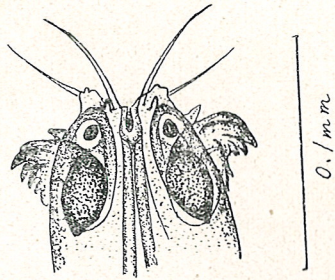


Fig. 2

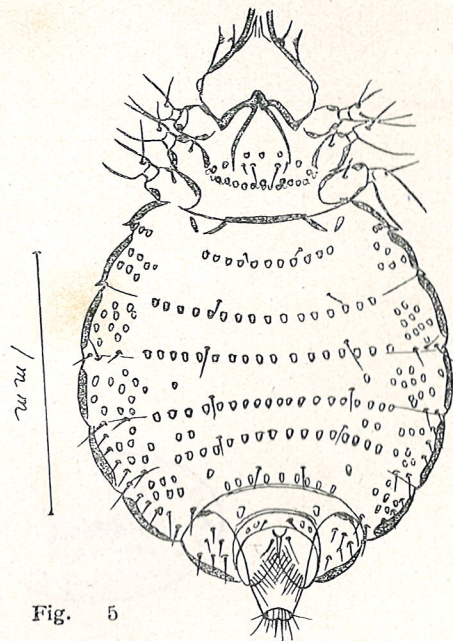


Fig. 4

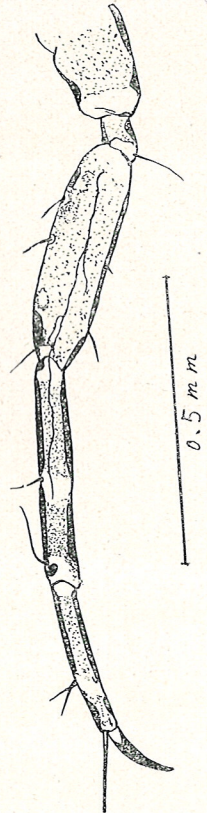


Fig. 5

