

Chewing lice (Phthiraptera: Amblycera, Ischnocera) recorded from birds in the Danube Delta Biosphere Reserve: a literature review with new data

József Rékási¹, J. Botond Kiss² & Attila D. Sándor³

¹ Középmakár dűlő 2/A, Pécs, HU-7635, Hungary; ² Danube Delta National Institute for Research and Development, Tulcea, Romania; ³ University of Agricultural Sciences and Veterinary Medicine, Faculty of Veterinary Medicine, Department of Parasitology and Parasitic Diseases, Cluj-Napoca, Romania

ABSTRACT—Authors review both published and unpublished records of bird-lice associations from the Danube Delta, Romania. Out of a total of 233 bird species regularly encountered in the region, 176 bird species (representing 20 bird orders and 50 families) were recorded to host lice, with a total of 393 different louse-host associations. We listed a total of 270 louse species and subspecies altogether, including 79 species of Amblycera (three families: Laemobothriidae, Menoponidae and Riciniidae) and 191 species of Ischnocera (one Family: Philopteriidae).

Key words: diversity, ectoparasites, Romania, migratory hotspot, host-parasite relations

Correspondence: Sándor, D. Attila, Calea Mănăştur 3-5, Cluj-Napoca RO-400372, Romania; Tel: +40264596384; Fax: +40264593792; E-mail: attila.sandor@usamvcluj.ro

Introduction

Chewing lice (Insecta: Phthiraptera: Amblycera, Ischnocera) are obligate ectoparasitic insects of endotherm vertebrates, mostly birds. They complete their entire life-cycle on their host's body, thus their ecology, evolution, and behaviour is strictly adapted to their hosts' characteristics. They often have relatively high host specificity, with almost 4000 valid species and subspecies described from birds (Price *et al.*, 2003). They may occur wherever their host species are present; even though they are not evenly distributed across host individuals and host species at all. Host behaviour and ecology may influence parasite abundance (Rózsa, 1997; Rékási *et al.*, 1998; D'Amico & Barbosa, 2011), taxonomic richness (Felső & Rózsa, 2006) or evolution (Gustafsson & Olsson, 2012). Local habitat conditions may favour the richness of parasites on birds (Carrillo *et al.*, 2007) or may pose barriers in the distribution (Voelker *et al.*, 2013).

While the louse fauna of European birds are among the best studied (see e.g. Vas *et al.*, 2012 for a recent survey), there are large gaps in our knowledge, especially regarding the eastern part of the continent. The Danube Delta region (Romania) is one of Europe's largest wetlands with an estimated 233 species of birds encountered (Platteeuw *et al.*, 2004). Among these birds, 176 species breed in the Danube Delta Biosphere Reserve (DDBR), while the abundance and diversity of migrants during passage make this region an outstanding bird diversity hotspot (Papp & Sándor, 2007). Although the first publication dedicated to the study of avian lice of this region was published as early as 1941 (Jordan-Georgescu,

1941), and subsequently a large number of publications focussed on the avian lice collected here (Vasiliu, 1946; Negru, 1958; 1959; 1962; 1963; Bechet 1959; 1961; 1962; 1964; 1968a; 1968b; Constantineanu & Piscă, 1959; Kéler, 1960; Constantineanu et al., 1961; Rădulescu, 1968; Kiss, 1971; Rékási & Kiss, 1977; 1980; 1983; 1984; 1994; 1997; 1999; 2005; 2006a; 2006b; Rékási et al., 1997; Adam & Sándor, 2004; Marinov, 2006; Adam, 2007; Adam et al., 2009), no comprehensive checklist has been published up to date. Moreover, the recent taxonomic changes (Price et al., 2003) also make a re-assessment of previous publications imperious. Thus, the aim of this study is to present the species diversity and to make a critical synthesis of the currently available data on all chewing lice collected up to present from wild birds in the Danube Delta.

Study site and methods

We collated into a database all published records of chewing lice collected from birds in the DDBR (Figure 1). In order to do this, a keyword search was performed, using the following keywords: ‘lice’, ‘louse’, ‘Mallophaga’, ‘Phthiraptera’, and ‘Romania’ in the databases ‘Web of Science’, ‘Zoological Records’ and ‘Google Scholar’. Subsequently, copies of the original publications were obtained and the references cited in these works were also traced. This process was repeated until no new references were found. Each individual record was carefully analyzed and geo-referenced to overlay with the current map of DDBR. Several records were omitted due to taxonomic uncertainties, or because we were not able to ascertain its exact geographic location. We also excluded all records referring to atypical louse-host associations (termed ‘deserteur’ or ‘straggler’ in most publications) due to the high possibility of accidental cross-contamination in such cases. We accepted only those louse-host associations to be ‘typical’ (natural) that are listed by Price et al. (2003) as such. Our nomenclature follows Price et al. (2003) for chewing lice, and Clements et al. (2016) for birds. We present our checklist in two ways: (1) for each bird species with louse records we list the louse species with pertinent references; (2) the list of chewing louse species in taxonomic order with all host species recorded in DDBR (Table 1). The taxonomic order of bird orders and families follows Clements et al. (2016) with species listed in alphabetic order within the families. Louse orders and families are listed according to Price et al. (2003), with species listed in alphabetic order within the families. As all records belong to the DDBR region, we listed only the references citing the individual records, without more exact location data or number of lice. Full information is listed only in case of yet unpublished records of new lice-host associations, which are marked with an asterisk (referenced as ‘present study’). For the isolated insects the following acronyms were used: M = male; F = female; L = larva.

Results

The database contained 1591 individual entries, relating to all louse species for which valid records were published for the DDBR territory. Altogether 176 bird species, representing 20 orders and 50 families, were reported to harbour lice; with a total of 393

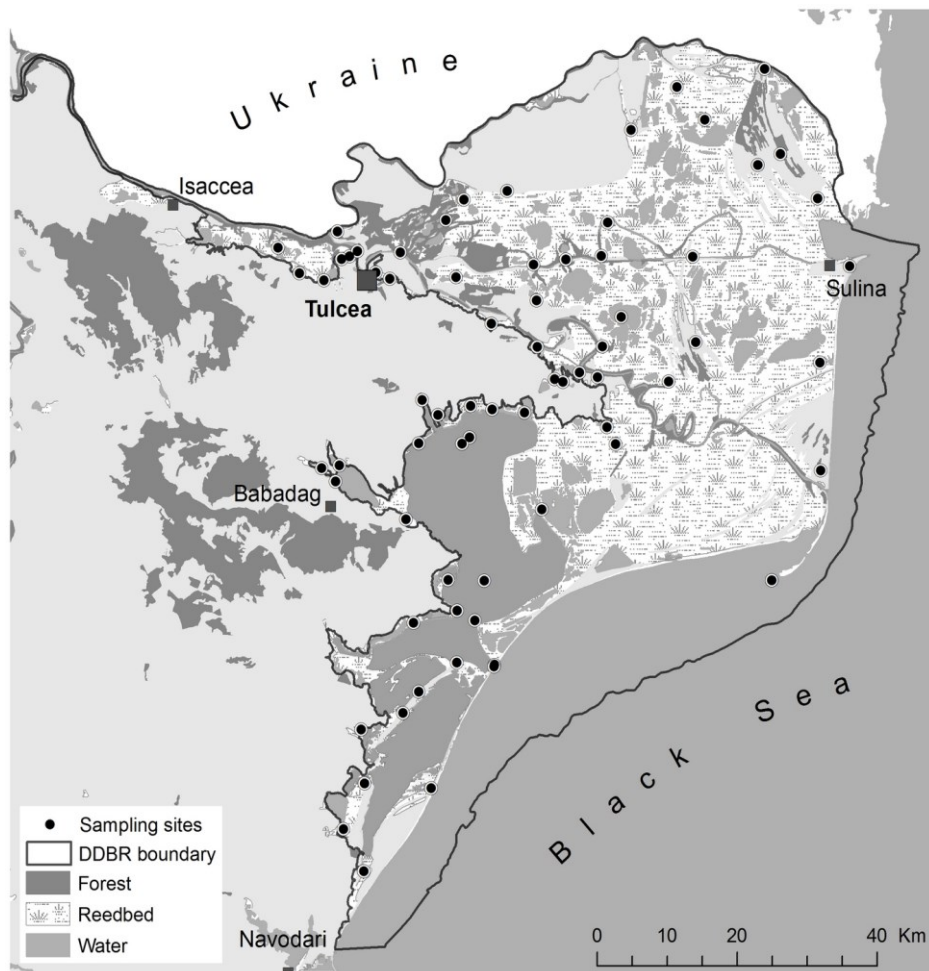


Figure 1. Map of the study site highlighting the collection locations, general land use and the boundaries of the Danube Delta Biosphere Reserve.

1. ábra. A tanulmányi oldal térképe, kiemelve a gyűjtemény helyszíneit, az általános földhasználat és a Duna-delta Bioszféra Rezervátum határait (térképjelzések magyarázatát sorrendben: mintavételi helyek ; DDBR határa; erdő; nádas; víz)

different louse-host associations established. From the bird species recorded in the DDBR, lice were recorded from all but one order (order Otidiformes) and 83% of all families present (Table 1). Most louse species were recorded from *Vanellus vanellus* and *Turdus merula* (six species each). Two louse orders were found, one order with three families (Am-

Bird family	No. of bird species	No. of chewing louse species
Accipitriformes	10	18
Anseriformes	22	21
Bucerotiformes	1	1
Caprimulgiformes	1	1
Charadriiformes	45	76
Ciconiiformes	1	2
Columbiformes	5	9
Coraciiformes	3	5
Cuculiformes	1	1
Falconiformes	2	1
Galliformes	3	12
Gaviiformes	2	1
Gruiiformes	5	12
Passeriformes	47	69
Pelecaniformes	12	18
Piciformes	4	5
Podicipediformes	3	4
Procellariiformes	1	2
Strigiformes	6	8
Suliformes	2	4
Total	176	270

Table 1. Bird orders with the number of host and louse species recorded

1. táblázat. A madárrendek listája a vizsgált madárfajok és a meghatározott tolltetűfajok számával

blycera: Laemobothriidae, Menoponidae and Ricinidae) and another order with one family (Ischnocera: Philopteridae). The total number of louse species and subspecies was 270, with 79 taxa of Amblycera and 191 taxa of Ischnocera. The taxonomically most diverse louse genus was *Quadriceps* (24 species), followed by *Philopterus* (23 species) and *Brueelia* (18 species). *Anatoecus icterodes* (Nitzsch, 1818) had the most host species (13), followed by *Anaticola crassicornis* (Scopoli, 1763) (10 species) and *Trinoton querquedulae* (Linnaeus, 1758) (9 species), all being parasites exclusively of waterfowl (Anatidae).

The checklist of louse-host associations recorded in the DDBR, according to host species

Order: ANSERIFORMES

Family: Anatidae

Anas acuta Linnaeus, 1758

Anaticola crassicornis (Scopoli, 1763) – Rékási & Kiss (1980; 1994)

Anatoecus icterodes (Nitzsch, 1818) – Rékási & Kiss (1980; 1984; 1997)

Trinoton querquedulae (Linnaeus, 1758) – Rékási & Kiss (1980; 1997)

Anas clypeata Linnaeus, 1758

Anaticola crassicornis (Scopoli, 1763) – Rékási & Kiss (1980)

Anatoecus dentatus (Scopoli, 1763) – Kéler (1960); Rékási & Kiss (1984)

Holomenopon setigerum (Blagovescenskii, 1948) – Rékási & Kiss (1984)

Anas crecca Linnaeus, 1758

Anaticola crassicornis (Scopoli, 1763) – Jordan-Georgescu (1941)

List of chewing lice in the Danube Delta

- Anatoecus dentatus* (Scopoli, 1763) – Rékási & Kiss (1977; 1984)
Anatoecus icterodes (Nitzsch, 1818) – Jordan-Georgescu (1941); Rékási & Kiss (1980; 1994)
Holomenopon leucoxanthum (Burmeister, 1838) – Rékási & Kiss (1977; 1994)
Trinoton querquedulae (Linnaeus, 1758) – Rékási & Kiss (1977; 1994)
- Anas penelope* Linnaeus, 1758
Anaticola crassicornis (Scopoli, 1763) – Rékási & Kiss (1980; 1984; 1997)
Anatoecus icterodes (Nitzsch, 1818) – Rékási & Kiss (1994; 1997); Rékási et al. (1997)
Holomenopon leucoxanthum (Burmeister, 1838) – Rékási & Kiss (1984)
Trinoton querquedulae (Linnaeus, 1758) – Rékási & Kiss (1984; 1994)
- Anas platyrhynchos* Linnaeus, 1758
Anaticola crassicornis (Scopoli, 1763) – Rékási & Kiss (1977; 1980; 1984; 2006a)
Anatoecus dentatus (Scopoli, 1763) – Kéler (1960); Piscică (1980); Rékási & Kiss (1977; 1980; 1984; 1997; 2006a)
Anatoecus icterodes (Nitzsch, 1818) – Rékási & Kiss (1980; 1984; 1997)
Holomenopon transvaalense (Bedford, 1920) – Rékási & Kiss (1977; 1997)
Trinoton querquedulae (Linnaeus, 1758) – Bechet (1962); Rékási & Kiss (1977; 1980; 1984; 1997; 2006a)
- Anas querquedula* Linnaeus, 1758
Anaticola crassicornis (Scopoli, 1763) – Rékási & Kiss (1977)
Anatoecus dentatus (Scopoli, 1763) – Kéler (1960); Rékási & Kiss (1977; 1997)
Holomenopon leucoxanthum (Burmeister, 1838) – Rékási & Kiss (1977)
Trinoton querquedulae (Linnaeus, 1758) – Rékási & Kiss (1977; 1980)
- Anas strepera* Linnaeus, 1758
Anaticola crassicornis (Scopoli, 1763) – Rékási & Kiss (1977)
Trinoton querquedulae (Linnaeus, 1758) – Rékási & Kiss (1980)
- Anser albifrons* (Scopoli, 1769)
Anaticola anseris (Linnaeus, 1758) – Rékási & Kiss (1980; 1997)
Anatoecus icterodes (Nitzsch, 1818) – Rékási & Kiss (1980; 1997)
Trinoton anserinum (J.C. Fabricius, 1805) – Rékási & Kiss (1980)
- Anser anser* (Linnaeus, 1758)
Anaticola anseris (Linnaeus, 1758) – Rékási & Kiss (1977; 1984; 1994)
Anatoecus icterodes (Nitzsch, 1818) – Rékási & Kiss (1977; 1980; 1984; 1997)
Ciconiphilus pectiniventris (Harrison, 1916) – Rékási & Kiss (1977; 1997)
Ornithobius mathisi (Neumann, 1912) – Rékási & Kiss (1977; 1984; 1997)
Trinoton anserinum (J.C. Fabricius, 1805) – Rékási & Kiss (1977; 1980; 1984; 1994; 1997)
- Aythya ferina* (Linnaeus, 1758)
Anaticola crassicornis (Scopoli, 1763) – Rékási & Kiss (1977)
- Aythya fuligula* (Linnaeus, 1758)
Anaticola crassicornis (Scopoli, 1763) – Rékási & Kiss (1977; 1980; 1997)
Anatoecus icterodes (Nitzsch, 1818) – Rékási & Kiss (1977)
Holomenopon leucoxanthum (Burmeister, 1838) – Rékási & Kiss (1980)
- Aythya nyroca* (Güldenstädt, 1770)
Anaticola crassicornis (Scopoli, 1763) – Rékási & Kiss (1984; 1997)
Anatoecus dentatus (Scopoli, 1763) – Kéler (1960); Bechet (1962); Rékási & Kiss (1977; 1980; 1984; 1994; 1997)
Anatoecus icterodes (Nitzsch, 1818) – Kéler (1960); Bechet (1962); Rékási & Kiss (1977; 1980; 1984; 1997)
Holomenopon leucoxanthum (Burmeister, 1838) – Rékási & Kiss (1997); Rékási et al. (1997)
Trinoton anserinum (J.C. Fabricius, 1805) – Rékási & Kiss (1984; 1997)
Trinoton querquedulae (Linnaeus, 1758) – Bechet (1959; 1962); Rékási & Kiss (1977; 1980; 1997)
- Branta ruficollis* (Pallas, 1769)
Anaticola beieri Eichler, 1954 – Adam (2007); Adam et al. (2009)
Anatoecus icterodes (Nitzsch, 1818) – Rékási & Kiss (1980; 1997)
**Ciconiphilus pectiniventris* (Harrison, 1916) – present study [1F, 1L; Sălchioara, 17.12.2006]
- Bucephala clangula* (Linnaeus, 1758)
**Anaticola clangulae* (Fabricius, 1780) – present study [2M, 4F, 5L; Lacul Razim, 13.01.2011]

- Cygnus cygnus* (Linnaeus, 1758)
Ornithobius cygni (Linnaeus, 1758) – Rékási & Kiss (1997)
- Cygnus olor* (Gmelin, 1789)
**Anatoecus dentatus* (Scopoli, 1763) – present study [1F; Tulcea, 20.01.2014]
Ciconiphilus cygni Price & Beer, 1965 – Rékási & Kiss (1977; 1984; 1997)
Ornithobius bucephalus (Giebel, 1874) – Rékási & Kiss (1977; 1984; 1997)
- Mergellus albellus* (Linnaeus, 1758)
**Anaticola mergiserrati* (De Geer, 1788) – present study [1F; Lacul Razim, 17.01.2007]
Anatoecus dentatus (Scopoli, 1763) – Rékási & Kiss (1977)
Anatoecus icterodes (Nitzsch, 1818) – Rékási & Kiss (1977)
**Trinoton querquedulae* (Linnaeus, 1758) – present study [1M; Lacul Razim, 17.01.2007]
- Mergus merganser* Linnaeus, 1758
Anatoecus icterodes (Nitzsch, 1818) – Rékási et al. (1997)
Holomenopon clypeilargum Eichler, 1943 – Rékási & Kiss (1977)
- Mergus serrator* Linnaeus, 1758
Anaticola mergiserrati (De Geer, 1788) – Rékási & Kiss (1997); Rékási et al. (1997)
Anatoecus icterodes (Nitzsch, 1818) – Rékási & Kiss (1997)
- Netta rufina* (Pallas, 1773)
Acidoproctus moschatae (Linnaeus, 1758) – Rékási & Kiss (1980; 1994; 1997; 2006a)
Anatoecus icterodes (Nitzsch, 1818) – Rékási & Kiss (1977; 1980; 1984; 1997)
Holomenopon leucoanthum (Burmeister, 1838) – Rékási & Kiss (1980; 1997)
Trinoton querquedulae (Linnaeus, 1758) – Rékási & Kiss (1980; 1994)
- Tadorna ferruginea* (Pallas, 1764)
Anaticola tadornae (Denny, 1842) – Rékási & Kiss (1997)
Holomenopon tadornae (Gervais, 1844) – Rékási & Kiss (1997)
- Tadorna tadorna* (Linnaeus, 1758)
Anaticola tadornae (Denny, 1842) – Rékási & Kiss (1997)

Order: GALLIFORMES

Family: Phasianidae

- Coturnix coturnix* (Linnaeus, 1758)
Amyrsidea fulvomaculata (Denny, 1842) – Rékási & Kiss (1980)
Cuclotogaster cinereus (Nitzsch, 1866) – Rékási & Kiss (1980; 1997)
Goniodes astrocephalus (Burmeister, 1838) – Rékási & Kiss (1997)
Menacanthus abdominalis (Piaget, 1880) – Rékási & Kiss (1997); Rékási et al. (1997)
- Perdix perdix* (Linnaeus, 1758)
Amyrsidea perdicis (Denny, 1842) – Rékási & Kiss (1997)
Goniocotes microthorax (Stephens, 1829) – Rékási & Kiss (1997); Rékási et al. (1997)
Goniodes dispar Burmeister, 1838 – Rékási & Kiss (1997)
Menopon pallens (Clay, 1949) – Rékási et al. (1997)
- Phasianus colchicus* Linnaeus, 1758
Amyrsidea perdicis (Denny, 1842) – Rékási & Kiss (1980; 1984; 1997)
Goniocotes chrysocephalus Giebel, 1874 – Rékási & Kiss (1977; 1980; 1984; 1997)
Goniodes colchici (Denny, 1842) – Rékási & Kiss (1977; 1980; 1984)
Lipeurus maculosus Clay, 1938 – Rékási & Kiss (1977; 1980; 1984; 1997)
Oxylipeurus colchicus Clay, 1938 – Rékási & Kiss (1977; 1980; 1997)

Order: GAVIIFORMES

Family: Gaviidae

- Gavia arctica* (Linnaeus, 1758)
Craspedonirmus colymbinus (Denny, 1842) – Rékási & Kiss (1980; 1994; 1997)
- Gavia immer* (Brunnich, 1764)
Craspedonirmus colymbinus (Denny, 1842) – Rékási & Kiss (1977)

Order: PODICIPEDIFORMES

Family: Podicipedidae

Podiceps cristatus (Linnaeus, 1758)

Aquanirmus podiceps (Denny, 1842) – Rékási & Kiss (1977; 1980; 1997)

Pseudomenopon dolium (Rudow, 1869) – Jordan-Georgescu (1941); Rékási & Kiss (1977; 1980; 1984; 1997)

Podiceps grisegena (Boddaert, 1783)

Aquanirmus emersoni Edwards, 1965 – Bechet (1968a); Rékási & Kiss (1980; 1984; 1997)

Podiceps nigricollis Brehm, 1831

Aquanirmus colymbinus (Scopoli, 1763) – Rékási & Kiss (1980)

Pseudomenopon dolium (Rudow, 1869) – Rékási & Kiss (1980; 1997)

Order: PROCELLARIIFORMES

Family: Procellariidae

Puffinus yelkouan (Acerbi, 1827)

Halipeurus diversus (Kellogg, 1896) – Kiss (1971)

Saemundsonia kosswigi Timmermann, 1962 – Kiss (1971)

Order: CICONIIFORMES

Family: Ciconiidae

Ciconia ciconia (Linnaeus, 1758)

Colpocephalum zebra (Burmeister, 1838) – Rékási et al. (1997); Marinov (2006)

Neophilopterus incompletus (Denny, 1842) – Rékási et al. (1997); Marinov (2006)

Order: SULIFORMES

Family: Phalacrocoracidae

Phalacrocorax carbo (Linnaeus, 1758)

Eidmanniella pellucida (Rudow, 1869) – Rékási & Kiss (1977; 1980; 1997)

Pectinopygus dispar (Piaget, 1880) – Jordan-Georgescu (1941)

Pectinopygus gyricornis (Denny, 1842) – Jordan-Georgescu (1941); Vasiliu (1946); Bechet (1959; 1961)

Rékási & Kiss (1977; 1980; 1984; 1997)

Phalacrocorax pygmeus (Pallas, 1773)

Eidmanniella pellucida (Rudow, 1869) – Rékási & Kiss (1977; 1980; 1984; 1997)

Pectinopygus excornis (Blagovescenskii, 1940) – Negru (1961)

Pectinopygus gyricornis (Denny, 1842) – Rékási & Kiss (1977; 1980)

Order: PELECANIFORMES

Family: Pelecanidae

Pelecanus crispus Bruch, 1832

Piagetiella titan (Piaget, 1880) – Rékási & Kiss (1977; 2005)

Pelecanus onocrotalus Linnaeus, 1758

Colpocephalum eucarenum Burmeister, 1838 – Negru (1961; 1963); Rékási & Kiss (1977; 1984; 1997)

Pectinopygus forficulatus (Nitzsch, 1866) – Negru (1961); Rékási & Kiss (1977; 1997)

Piagetiella titan (Piaget, 1880) – Negru (1961); Rădulescu (1968); Rékási & Kiss (1977; 1980; 1984; 2005)

Family: Ardeidae

Ardea alba (Linnaeus, 1758)

Ardeicola expallidus (Blagovescenskii, 1940) – Rékási & Kiss (1977; 1980; 1997)

Ciconiphilus decimfasciatus (Boisduval & Lacordaire, 1835) – Rékási & Kiss (1984; 1997)

Ardea cinerea Linnaeus, 1758

Ardeicola ardeae (Linnaeus, 1758) – Constantineanu et al. (1961)

Ciconiphilus decimfasciatus (Boisduval & Lacordaire, 1835) – Vasiliu (1946)

Ardea purpurea (Linnaeus, 1766)

Ardeicola ardeae (Linnaeus, 1758) – Constantineanu et al. (1961)

Ardeicola leucoproctus (Nitzsch, 1866) – Rékási & Kiss (1977; 1980; 1994)

- Ardeola ralloides* (Scopoli, 1769)
Ardeiphilus vittatus (Rudow, 1866) – *Vasiliu (1946); Rékási & Kiss (1984)*
- Botaurus stellaris* (Linnaeus, 1758)
Ardeicola stellaris (Denny, 1842) – *Vasiliu (1946); Negru (1958); Rékási & Kiss (1980; 1984)*
Ardeiphilus trochioxus (Burmeister, 1838) – *Vasiliu (1946); Rékási & Kiss (1980; 1997)*
- Egretta garzetta* (Linnaeus, 1758)
Ardeicola expallidus (Blagovescenskii, 1940) – *Rékási & Kiss (1980; 1997)*
Ciconiphilus decimfasciatus (Boisduval & Lacordaire, 1835) – *Vasiliu (1946); Rékási & Kiss (1980)*
- Ixobrychus minutus* (Linnaeus, 1766)
Ciconiphilus decimfasciatus (Boisduval & Lacordaire, 1835) – *Bechet (1959)*
- Nycticorax nycticorax* (Linnaeus, 1758)
Ardeicola goisagi (Uchida, 1954) – *Bechet (1964); Rékási & Kiss (1980)*
Ciconiphilus decimfasciatus (Boisduval & Lacordaire, 1835) – *Bechet (1961)*

Family: Threskiornithidae

- Platalea leucorodia* Linnaeus, 1758
Ardeicola plataleae (Linnaeus, 1758) – *Negru (1963); Rékási & Kiss (2006a)*
Eucolpocephalum femorale (Piaget, 1880) – *Rékási & Kiss (2006a)*
Ibidoecus plataleae (Denny, 1842) – *Negru (1961; 1963); Rékási & Kiss (1977; 2006a)*
- Plegadis falcinellus* Linnaeus, 1766
Ardeicola raphidius (Nitzsch, 1866) – *Negru (1958); Bechet (1962); Rékási & Kiss (1977; 1980; 1984; 1994)*
Colpocephalum leptopygos (Nitzsch, 1874) – *Rékási & Kiss (1977; 1980; 1984)*
Ibidoecus bisignatus (Nitzsch, 1866) – *Negru (1958); Bechet (1962); Rékási & Kiss (1977; 1980; 1984)*
Plegadiphilus plegadis (Dubinin, 1938) – *Jordan-Georgescu (1941); Bechet (1962); Rékási & Kiss (1977; 1980; 1994; 1997)*

Order: ACCIPITRIFORMES

Family: Accipitridae

- Accipiter nisus* (Linnaeus, 1758)
Degeeriella nisus (Giebel, 1866) – *Rékási & Kiss (1997)*
- Aquila heliaca* Savigny, 1809
Colpocephalum imperialis Martin Mateo, 1981 – *Rékási & Kiss (2006b)*
Craspedorrhynchus fraterculus (Eichler & Zlotorzycska, 1975) – *Rékási & Kiss (2006b)*
- Buteo buteo* (Linnaeus, 1758)
Craspedorrhynchus dilatatus (Rudow, 1869) – *Rékási & Kiss (1994)*
Craspedorrhynchus platystomus (Burmeister, 1838) – *Rékási & Kiss (1980; 1997)*
Degeeriella fulva (Giebel, 1874) – *Rékási & Kiss (1980; 1997)*
- Buteo lagopus* (Pontoppidan, 1763)
Colpocephalum nanum (Piaget, 1890) – *Rékási & Kiss (1977)*
Craspedorrhynchus dilatatus (Rudow, 1869) – *Rékási & Kiss (1977; 1980; 1997)*
Craspedorrhynchus platystomus (Burmeister, 1838) – *Rékási & Kiss (1997)*
- Buteo rufinus* (Cretzschmar, 1829)
Laemobothrion maximum (Scopoli, 1763) – *Rékási & Kiss (2006b)*
- Circus aeruginosus* (Linnaeus, 1758)
Craspedorrhynchus rotundatus (Piaget, 1880) – *Rékási & Kiss (1984; 1997)*
Degeeriella fusca (Denny, 1842) – *Rékási & Kiss (1980; 1984)*
- Clanga pomarina* Brehm, 1831
Colpocephalum flavescens (De Haan, 1829) – *Rékási & Kiss (1997)*
Craspedorrhynchus macrocephalus (Nitzsch, 1874) – *Rékási & Kiss (1997)*
Craspedorrhynchus naevius (Giebel, 1861) – *Rékási & Kiss (1980)*
- Haliaeetus albicilla* (Linnaeus, 1758)
Colpocephalum flavescens (De Haan, 1829) – *Rékási & Kiss (1997; 2006b)*
Craspedorrhynchus macrocephalus (Nitzsch, 1874) – *Rékási & Kiss (1997; 2006b)*
Degeeriella discocephalus (Burmeister, 1838) – *Rékási & Kiss (2006b)*
**Falcolipeurus sulcifrons* (Denny, 1842) – present study [1F; Tulcea, 31.07.2013]

Hieraaetus pennatus (Gmelin, 1788)

Laemobothrion maximum (Scopoli, 1763) – Negru (1959)

Pernis apivorus (Linnaeus, 1758)

Colpocephalus apivorus Tendeiro, 1958 – Rékási & Kiss (1980)

Craspedorrhynchus melittoscopus (Nitzsch, 1874) – Rékási & Kiss (1997)

Degeeriella phlyctopygus (Nitzsch, 1861) – Rékási & Kiss (1980)

Order: GRUIFORMES

Family: Rallidae

Fulica atra Linnaeus, 1758

Fulicoffula lurida (Nitzsch, 1818) – Jordan-Georgescu (1941); Bechet (1959); Constantineanu et al. (1961); Rékási & Kiss (1980; 1984; 1997; 2006a); Adam (2007); Adam et al. (2009)

Incidifrons fulicae (Linnaeus, 1758) – Constantineanu & Piscică (1959); Rékási & Kiss (1980; 1984; 1997; 2006a); Adam (2007); Adam et al. (2009)

Laemobothrion atrum (Nitzsch, 1818) – Bechet (1959); Constantineanu et al. (1961); Rékási & Kiss (1980; 2006)

Pseudomenopon pilosum (Scopoli, 1763) – Constantineanu et al. (1961); Rékási & Kiss (1977; 1980; 2006a); Adam (2007); Adam et al. (2009)

Rallicola fulicae (Denny, 1842) – Constantineanu et al. (1961); Rékási & Kiss (1980; 1984; 1997; 2006a); Adam (2007); Adam et al. (2009)

Gallinula chloropus (Linnaeus, 1758)

Incidifrons gallinulae Blagovescenskii, 1951 – Rékási & Kiss (1980; 1984; 1997)

Pseudomenopon pilosum (Scopoli, 1763) – Rékási & Kiss (1980; 1997); Rékási et al. (1997)

Rallicola minutus (Nitzsch, 1866) – Jordan-Georgescu (1941); Rékási & Kiss (1980; 1984; 1997)

Porzana porzana (Linnaeus, 1766)

Rallicola mystax (Giebel, 1874) – Rékási & Kiss (1977)

Rallus aquaticus Linnaeus, 1758

Pseudomenopon scopulacorne (Denny, 1842) – Rékási et al. (1997)

Rallicola cuspidatus (Scopoli, 1763) – Rékási & Kiss (1977; 1984)

Family: Gruidae

Grus grus (Linnaeus, 1758)

Esthiopterum gruis (Linnaeus, 1758) – Rékási & Kiss (1984)

Saemundssonina integer (Nitzsch, 1866) – Rékási & Kiss (1997)

Order: CHARADRIIFORMES

Family: Recurvirostridae

Himantopus himantopus (Linnaeus, 1758)

Actornithophilus himantopi (Blagovescenskii, 1951) – Negru (1961); Rékási & Kiss (1984)

Austromenopon himantopi (Timmermann, 1954) – Rékási & Kiss (1984)

Quadriceps hemichrous (Nitzsch, 1866) – Negru (1961); Rékási & Kiss (1984)

Quadriceps semifissus (Nitzsch, 1866) – Negru (1961); Rékási & Kiss (1984)

Recurvirostra avosetta Linnaeus, 1758

Quadriceps decipiens (Denny, 1842) – Rékási & Kiss (1997)

Quadriceps signatus (Piaget, 1880) – Rékási & Kiss (1997)

Family: Haematopodidae

Haematopus ostralegus Linnaeus, 1758

Actornithophilus grandiceps (Piaget, 1880) – Rékási & Kiss (1984)

Saemundssonina haematopi (Linnaeus, 1758) – Rékási & Kiss (1984)

Family: Charadriidae

Charadrius alexandrinus Linnaeus, 1758

Actornithophilus ochraceus (Nitzsch, 1818) – Rékási & Kiss (1980; 1997)

Quadriceps macrocephalus (Waterston, 1914) – Rékási & Kiss (1980)

Saemundssonina platygaster (Denny, 1842) – Rékási & Kiss (1980)

- Charadrius dubius* Scopoli, 1786
 Austroripon lutescens (Burmeister, 1838) – Bechet (1962)
 Quadriceps bicuspis (Nitzsch, 1874) – Bechet (1961)
- Charadrius morinellus* Linnaeus, 1758
 Quadriceps punctifer Hopkins, 1949 – Rékási et al. (1997)
 Saemundssonina scolopacisphaeopodis (Schränk, 1803) – Rékási & Kiss (1997)
- Pluvialis apricaria* (Linnaeus, 1758)
 Actornithophilus ochraceus (Nitzsch, 1818) – Rékási & Kiss (1984)
 Quadriceps charadrii (Linnaeus, 1758) – Rékási & Kiss (1984)
 Saemundssonina platygaster (Denny, 1842) – Rékási & Kiss (1997)
- Pluvialis squatarola* (Linnaeus, 1758)
 Saemundssonina conica naumanni (Giebel, 1874) – Rékási & Kiss (1984)
- Vanellus vanellus* (Linnaeus, 1758)
 Actornithophilus gracilis (Piaget, 1880) – Jordan-Georgescu (1941); Bechet (1961); Rékási & Kiss (1977; 1980; 1984; 1997)
 Actornithophilus ochraceus (Nitzsch, 1818) – Jordan-Georgescu (1941); Constantineanu et al. (1961)
 Luniceps holophaeus (Burmeister, 1838) – Rékási & Kiss (1977; 1984)
 Quadriceps junceus (Scopoli, 1763) – Bechet (1962); Rékási & Kiss (1977; 1980; 1984)
 Saemundssonina platygaster (Denny, 1842) – Rékási & Kiss (1980; 1997)
 Saemundssonina platygaster temporalis (Giebel, 1874) – Rékási & Kiss (1984)
- Family: Scolopacidae**
- Actitis hypoleucos* (Linnaeus, 1758)
 Austroripon hystriculum (Złatorzycka, 1968) – Rékási & Kiss (1997); Rékási et al. (1997)
 Quadriceps ravus (Kellogg, 1899) – Rékási et al. (1997)
- Arenaria interpres* (Linnaeus, 1758)
 Actornithophilus bicolor (Piaget, 1880) – Rékási & Kiss (1980)
 Quadriceps strepsilaris (Denny, 1842) – Rékási & Kiss (1980)
- Calidris alba* (Pallas, 1764)
 Actornithophilus umbrinus (Burmeister, 1838) – Rékási & Kiss (1997); Rékási et al. (1997)
 Luniceps actophilus (Kellogg & Chapman, 1899) – Rékási & Kiss (1980; 1994; 1997)
 Saemundssonina platygaster jadvigae Timmermann, 1969 – Rékási & Kiss (1997); Rékási et al. (1997)
- Calidris alpina* (Linnaeus, 1758)
 Austroripon alpinum (Timmermann, 1954) – Rékási & Kiss (1977)
 Carduiceps meinertzhageni (Timmermann, 1954) – Rékási & Kiss (1977)
 Luniceps holophaeus (Burmeister, 1838) – Rékási & Kiss (1977)
 Saemundssonina tringae (O. Fabricius, 1870) – Rékási & Kiss (1977)
- Calidris ferruginea* (Pontoppidan, 1763)
 Carduiceps fulvofasciatus (Grube, 1851) – Rékási & Kiss (1984)
- Calidris minuta* (Leisler, 1812)
 Actornithophilus umbrinus (Burmeister, 1838) – Rékási & Kiss (1977)
 Austroripon lutescens (Burmeister, 1838) – Rékási & Kiss (1977)
- Calidris temminckii* (Leisler, 1812)
 Saemundssonina platygaster (Denny, 1842) – Rékási & Kiss (1984)
- Gallinago gallinago* (Linnaeus, 1758)
 Cummingsiella ambigua (Burmeister, 1838) – Rékási & Kiss (1977)
 Rhynonirmus scolopacis (Denny, 1842) – Rékási & Kiss (1977); Rékási et al. (1997)
- Limosa limosa* (Linnaeus, 1758)
 Actornithophilus spinulosus (Piaget, 1880) – Bechet (1961); Rékási & Kiss (1977; 1980; 1997); Adam (2007); Adam et al. (2009)
 Austroripon limosae Timmermann, 1954 – Rékási & Kiss (1977; 1980; 1997)
 Carduiceps cingulatus (Denny, 1842) – Rékási & Kiss (1977; 1980; 1984)
 Luniceps limosella Timmermann, 1954 – Bechet (1968b); Adam (2007); Adam et al. (2009)
 Saemundssonina thompsoni Timmermann, 1951 – Rékási & Kiss (1977; 1980; 1997); Adam (2007); Adam et al. (2009)

- Numenius arquata* (Linnaeus, 1758)
Actornithophilus patellatus (Piaget, 1890) – Rékási & Kiss (1997)
Austroromenopon crocatum (Nitzsch, 1866) – Rékási & Kiss (1977; 1997)
Cummingsiella ovalis (Scopoli, 1763) – Rékási & Kiss (1980; 1997)
Lunaceps numenii (Denny, 1842) – Rékási & Kiss (1977; 1980)
Saemundssonina scolopacisphaeopodis (Schrank, 1803) – Rékási & Kiss (1977; 1997)
- Numenius phaeopus* (Linnaeus, 1758)
Austroromenopon phaeopodis (Schrank, 1802) – Rékási & Kiss (2006a)
Lunaceps numenii phaeopi (Denny, 1842) – Rékási & Kiss (1984; 2006a)
- Philomachus pugnax* (Linnaeus, 1758)
Actornithophilus pustulosus (Piaget, 1880) – Rékási & Kiss (1977; 1980; 1997)
Austroromenopon lutescens (Burmeister, 1838) – Rékási & Kiss (1977; 1980; 1997)
Carduceps scalaris (Piaget, 1880) – Rékási & Kiss (1980; 1997)
Lunaceps holophaeus (Burmeister, 1838) – Rékási & Kiss (1977; 1980; 1984)
Saemundssonina scolopacisphaeopodis (Schrank, 1803) – Rékási & Kiss (1977; 1997)
- Scolopax rusticola* Linnaeus, 1758
Austroromenopon icterum (Burmeister, 1838) – Rékási & Kiss (1977; 1984)
Cummingsiella aurea Hopkins, 1949 – Rékási & Kiss (1977; 1980; 1984; 1994; 1997)
Cummingsiella brelihi Timmermann, 1969 – Rékási & Kiss (1984; 1997)
Rhynonirmus helvolus (Burmeister, 1838) – Rékási & Kiss (1977; 1980; 1984; 1994; 1997; 2006a)
- Tringa erythropus* (Pallas, 1764)
Actornithophilus totani (Schrank, 1803) – Rékási & Kiss (1977)
Quadraceps furvus (Burmeister, 1838) – Rékási & Kiss (1977)
Saemundssonina platygaster (Denny, 1842) – Rékási & Kiss (1977)
- Tringa glareola* (Linnaeus, 1758)
Quadraceps obscurus (Burmeister, 1838) – Rékási & Kiss (1980)
- Tringa nebularia* (Gunnerus, 1767)
Quadraceps similis (Giebel, 1866) – Rékási & Kiss (1980; 1984)
- Tringa ochropus* Linnaeus, 1758
Quadraceps ochropi (Denny, 1842) – Rékási & Kiss (1977; 1984; 1997)
- Tringa stagnatilis* (Bechstein, 1803)
Quadraceps obscurus (Burmeister, 1838) – Rékási & Kiss (1997)
- Tringa totanus* (Linnaeus, 1758)
Actornithophilus totani (Schrank, 1803) – Rékási & Kiss (1980; 1997)
Quadraceps obtusus (Kellog & Kuwana, 1902) – Rékási & Kiss (1980; 1997)
Saemundssonina platygaster mollis (Nitzsch, 1874) – Rékási & Kiss (1980)

Family: Glareolidae

- Glareola pratincola* Linnaeus, 1766
Actornithophilus sedes Eichler, 1944 – Bechet (1961)

Family: Stercorariidae

- Stercorarius parasiticus* (Linnaeus, 1758)
Austroromenopon fuscifasciatum (Piaget, 1880) – Rékási & Kiss (1980; 1984)
Quadraceps normifer (Grube, 1851) – Rékási & Kiss (1980; 1984)
Saemundssonina cephalus (Denny, 1842) – Rékási & Kiss (1980; 1983; 1984)

Family: Laridae

- Chlidonias hybrida* (Pallas, 1769)
Quadraceps anagrapsus (Nitzsch, 1866) – Rékási & Kiss (1977; 1980; 1984; 1997)
Saemundssonina lobaticeps (Giebel, 1874) – Rékási & Kiss (1980; 1997)
- Chlidonias niger* (Linnaeus, 1758)
Quadraceps phaeonotus (Nitzsch, 1866) – Bechet (1962); Constantineanu & Pisciă (1959); Rékási & Kiss (1980)
Saemundssonina lobaticeps (Giebel, 1874) – Rékási & Kiss (1983)

- Chroicocephalus genei* (Brème, 1839)
Saemundssonina lari (O. Fabricius, 1780) – Rékási & Kiss (1997)
- Chroicocephalus ridibundus* (Linnaeus, 1758)
Austromenopon transversum (Denny, 1842) – Rékási & Kiss (1977; 1980; 1997)
Quadriceps punctatus (Burmeister, 1838) – Rékási & Kiss (1977; 1980; 1997)
Saemundssonina lari (O. Fabricius, 1780) – Rékási & Kiss (1977; 1980; 1984; 1997); Marinov (2006)
- Gelochelidon nilotica* C.L. Brehm, 1830
Saemundssonina sterna (Linnaeus, 1758) – Rékási & Kiss (1980)
- Hydrocoloeus minutus* (Pallas, 1776)
Saemundssonina lari (O. Fabricius, 1780) – Rékási & Kiss (1977)
- Hydroprogne caspia* (Pallas, 1770)
Quadriceps caspius (Giebel, 1874) – Rékási & Kiss (1977; 1980; 1984; 1997)
Saemundssonina laticaudata (Rudow, 1896) – Bechet (1962); Rékási & Kiss (1977; 1980; 1984; 1997)
- Ichthyaetus ichthyaetus* (Pallas, 1773)
Austromenopon transversum (Denny, 1842) – Rékási & Kiss (1983)
- Ichthyaetus melanocephalus* (Temminck, 1820)
Austromenopon transversum (Denny, 1842) – Bechet (1961); Rékási & Kiss (1997)
- Larus cachinnans* Pallas, 1811
Quadriceps ornatus (Grube, 1851) – Rékási & Kiss (1977; 1997); Marinov (2006)
Quadriceps punctatus (Burmeister, 1838) – Rékási & Kiss (1977; 1997)
Saemundssonina lari (O. Fabricius, 1780) – Rékási & Kiss (1977; 1980; 1984; 1997); Marinov (2006)
- Larus canus* (Linnaeus, 1758)
Saemundssonina lari (O. Fabricius, 1780) – Rékási & Kiss (1984; 1997)
- Larus fuscus* Linnaeus, 1758
Austromenopon transversum (Denny, 1842) – Rékási & Kiss (1984; 1997)
Quadriceps punctatus (Burmeister, 1838) – Rékási & Kiss (1980)
Saemundssonina lari (O. Fabricius, 1780) – Rékási & Kiss (1980; 1994)
- Rissa tridactyla* (Linnaeus, 1758)
Quadriceps ornatus (Grube, 1851) – Rékási et al. (1997)
Saemundssonina lari (O. Fabricius, 1780) – Rékási et al. (1997)
- Sterna hirundo* Linnaeus, 1758
Actornithophilus piceus Denny, 1842 – Constantineanu et al. (1961)
Austromenopon atrofultum (Piaget, 1880) – Bechet (1961); Rékási & Kiss (1977; 1980; 1994; 1997)
Quadriceps sellatus (Burmeister, 1838) – Rékási & Kiss (1977; 1980; 1994; 1997)
Saemundssonina sterna (Linnaeus, 1758) – Bechet (1961); Rékási & Kiss (1977; 1980; 1997)
- Thalasseus sandvicensis* (Latham, 1787)
Quadriceps longicollis (Rudow, 1869) – Rékási & Kiss (1977)
Quadriceps punctatus (Burmeister, 1838) – Rékási & Kiss (1977)
Saemundssonina laticaudata (Rudow, 1896) – Rékási & Kiss (1977)

Order: COLUMBIFORMES

Family: Columbidae

- Columba livia* var. *domestica* Gmelin, 1789 – Rékási & Kiss (1980)
Campanulotes compar (Burmeister, 1838) – Rékási & Kiss (1980)
Columbicola columbae (Linnaeus, 1758) – Rékási & Kiss (1980)
- Columba oenas* Linnaeus, 1758
Campanulotes bidentatus (Scopoli, 1763) – Rékási & Kiss (1980; 1984; 1994; 1997)
Columbicola columbae (Linnaeus, 1758) – Rékási & Kiss (1980; 1984; 1994)
- Columba palumbus* Linnaeus, 1758
Campanulotes bidentatus (Scopoli, 1763) – Rékási & Kiss (1980; 1984; 1994)
Coloceras damicorne (Nitzsch, 1866) – Rékási & Kiss (1977; 1980; 1984; 1997)
Columbicola claviformis (Denny, 1842) – Rékási & Kiss (1977; 1980; 1984; 1994)
- Streptopelia decaocto* (Fridvaldszky, 1838)
Campanulotes compar (Burmeister, 1838) – Rékási & Kiss (1980; 1997)
Coloceras piageti (Johnston & Harrison, 1912) – Rékási & Kiss (1984; 1997)
Columbicola bacillus (Giebel, 1866) – Rékási & Kiss (1977; 1980; 1984); Marinov (2006)

Streptopelia turtur (Linnaeus, 1758)

Coloceras britannicum Tendeiro, 1973 – Rékási & Kiss (1997); Rékási et al. (1997)

Columbicola bacillus (Giebel, 1866) – Rékási & Kiss (1980; 1984; 1997)

Hohorstiella streptopeliae (Eichler, 1940) – Rékási & Kiss (1977; 1997)

Order: CUCULIFORMES

Family: Cuculidae

Cuculus canorus (Linnaeus, 1758)

Cuculoecus latifrons (Denny, 1842) – Rékási & Kiss (1980; 2006a)

Order: STRIGIFORMES

Family: Tytonidae

Tyto alba (Scopoli, 1769)

Strigiphilus rostratus (Burmeister, 1838) – Rékási & Kiss (1997)

Family: Strigidae

Asio flammeus (Pontoppidan, 1763)

Strigiphilus cursor (Burmeister, 1838) – Rékási & Kiss (1980)

Asio otus (Linnaeus, 1758)

Strigiphilus barbatus (Osborn, 1902) – Rékási & Kiss (1984; 1997)

Athene noctua (Scopoli, 1769)

Strigiphilus cursitans (Nitzsch, 1861) – Rékási & Kiss (1984)

Bubo bubo (Linnaeus, 1758)

Kurodaia longipes (Giebel, 1874) – Rékási & Kiss (1984)

Strigiphilus strigis (Pontoppidan, 1763) – Rékási & Kiss (1984)

Strix aluco (Linnaeus, 1758)

Strigiphilus laticephalus (Uchida, 1949) – Rékási & Kiss (1980; 1997)

Strigiphilus portigi Eichler, 1952 – Rékási & Kiss (2006a)

Order: CAPRIMULGIFORMES

Family: Caprimulgidae

Caprimulgus europaeus Linnaeus, 1758

Mulcticola hypoleucus (Denny, 1842) – Bechet (1962)

Order: BUCEROTIFORMES

Family: Upupidae

Upupa epops Linnaeus, 1758

Upupicola upupae (Schrank, 1803) – Rékási et al. (1997)

Order: CORACIIFORMES

Family: Alcedinidae

Alcedo atthis (Linnaeus, 1758)

Alcedoffula alcedinis (Denny, 1842) – Bechet (1964); Rékási & Kiss (2006a)

Family: Meropidae

Merops apiaster Linnaeus, 1758

Brueelia apiastri (Denny, 1842) – Rékási & Kiss (1980)

Meromenopon meropis (Clay & Meinertzhagen, 1941) – Rékási & Kiss (1997); Rékási et al. (1997)

Meropoecus meropis (Denny, 1842) – Rékási & Kiss (1977; 1980; 1994)

Family: Coraciidae

Coracias garrulus Linnaeus, 1758

Capraiella subcuspidata (Burmeister, 1838) – Rékási & Kiss (1984; 2006a)

Order: PICIFORMES

Family: Picidae

Rékási, J. et al.

- Dendrocopos major* (Linnaeus, 1758)
 Penenirmus auritus (Scopoli, 1763) – Rékási & Kiss (1997)
 Picicola candidus (Nitzsch, 1866) – Rékási & Kiss (1997)
Dendrocopos syriacus (Hemprich & Ehrenberg, 1833)
 Penenirmus auritus (Scopoli, 1763) – Rékási & Kiss (2006a)
Dryocopus martius (Linnaeus, 1758)
 Colpocephalum inaequale Burmeister, 1838 – Rékási & Kiss (1984)
 Penenirmus heteroscelis (Nitzsch, 1866) – Rékási & Kiss (1984)
Picus canus Gmelin, 1788
 Menacanthus pici (Denny, 1842) – Rékási & Kiss (1984)
 Penenirmus auritus (Scopoli, 1763) – Rékási & Kiss (1997)

Order: FALCONIFORMES

Family: Falconidae

- Falco subbuteo* Linnaeus, 1758
 Degeeriella rufa (Burmeister, 1838) – Rékási & Kiss (2006b)
Falco tinnunculus Linnaeus, 1758
 Degeeriella rufa (Burmeister, 1838) – Rékási & Kiss (1984)

Order: PASSERIFORMES

Family: Laniidae

- Lanius collurio* Linnaeus, 1758
 Menacanthus camelinus (Nitzsch, 1874) – Sándor et al. (submitted)
Lanius excubitor Linnaeus, 1758
 Philopterus coarctatus (Scopoli, 1763) – Rékási & Kiss (1997)
Lanius minor Gmelin, 1788
 Menacanthus camelinus (Nitzsch, 1874) – Adam (2007); Adam et al. (2009)

Family: Oriolidae

- Oriolus oriolus* (Linnaeus, 1758)
 Brueelia munda (Nitzsch, 1866) – Rékási & Kiss (1997)
 Menacanthus orioli Blagovescenskii, 1951 – Rékási & Kiss (1997)

Family: Corvidae

- Corvus corax* Linnaeus, 1758
 Philopterus corvi (Linnaeus, 1758) – Rékási & Kiss (1997)
Corvus cornix (Linnaeus, 1758)
 Brueelia uncinosa (Burmeister, 1838) – Bechet (1962); Rékási & Kiss (1980; 1984; 1997)
 **Menacanthus eurysternus* (Burmeister, 1838) – present study [1F, 2L; Sălchioara, 17.01.2013]
 Myrsidea cornicis (De Geer, 1776) – Bechet (1962); Rékási & Kiss (1977; 1980; 1984; 1997)
 Philopterus ocellatus (Scopoli, 1763) – Bechet (1962); Rékási & Kiss (1977; 1980; 1984; 1997); Marinov (2006)
Corvus frugilegus Linnaeus, 1758
 **Brueelia perforata* (Złotorzycka, 1964) – present study [2F, 2L; Sălchioara, 18.01.2013]
 Brueelia tasniemae Ansari, 1957 – Rékási & Kiss (1980; 1984)
 Colpocephalum fregili (Denny, 1842) – Rékási & Kiss (1980)
 Myrsidea isostoma (Nitzsch, 1866) – Rékási & Kiss (1980; 1997)
 Philopterus atratus Nitzsch, 1818 – Rékási & Kiss (1977; 1980; 1984; 1997)
Corvus monedula (Linnaeus, 1758)
 Myrsidea anathorax (Nitzsch, 1866) – Rékási & Kiss (1980)
 Philopterus guttatus (Denny, 1842) – Rékási & Kiss (1984)
Garrulus glandarius (Linnaeus, 1758)
 Brueelia glandarii (Denny, 1842) – Rékási & Kiss (1984; 1997)
 Myrsidea indivisa (Nitzsch, 1866) – Rékási & Kiss (1997)
 Philopterus garruli Boisduval & Lacordaire, 1835 – Rékási & Kiss (1984)

Nucifraga caryocatactes (Linnaeus, 1758)

Myrsidea brunnea (Nitzsch, 1866) – Rékási & Kiss (1997)

Philopterus crassipes (Burmeister, 1838) – Rékási & Kiss (1997)

Pica pica (Linnaeus, 1758)

Menacanthus eurysternus (Burmeister, 1838) – Sándor et al. (submitted)

Myrsidea picae (Linnaeus, 1758) – Rékási & Kiss (1980); Sándor et al. (submitted)

Philopterus picae (Denny, 1842) – Rékási & Kiss (1977; 1980; 1984; 1997)

Family: Panuridae

Panurus biarmicus (Linnaeus, 1758)

Menacanthus eurysternus (Burmeister, 1838) – Sándor et al. (submitted)

Penenirmus visendus (Złotorzycka, 1964) – Sándor et al. (submitted)

Family: Alaudidae

Alauda arvensis Linnaeus, 1758

Philopterus stadleri (Eichler, 1959) – Rékási & Kiss (1997)

Galerida cristata (Linnaeus, 1758)

Philopterus alexanderkoenigi (Eichler, 1953) – Rékási & Kiss (1980)

Lullula arborea (Linnaeus, 1758)

Philopterus arboreus Fedorenko, 1984 – Rékási & Kiss (1997)

Family: Hirundinidae

Hirundo rustica (Linnaeus, 1758)

Brueelia domestica (Kellog & Chapman, 1899) – Bechet (1962); Rékási & Kiss (1980; 1997); Sándor et al. (submitted)

Myrsidea rustica (Giebel, 1874) – Rékási & Kiss (1997); Sándor et al. (submitted)

Philopterus excisus Nitzsch, 1818 – Bechet (1962); Rékási & Kiss (1997)

Family: Paridae

Cyanistes caeruleus (Linnaeus, 1758)

Penenirmus pari (Denny, 1842) – Rékási & Kiss (1984); Sándor et al. (submitted)

Family: Troglodytidae

Troglodytes troglodytes (Linnaeus, 1758)

Menacanthus tenuifrons Blagovescenskii, 1940 – Sándor et al. (submitted)

Penenirmus albiventris (Scopoli, 1763) – Sándor et al. (submitted)

Family: Regulidae

Regulus regulus (Linnaeus, 1758)

Menacanthus eurysternus (Burmeister, 1838) – Sándor et al. (submitted)

Philopterus reguli (Denny, 1842) – Sándor et al. (submitted)

Family: Phylloscopidae

Phylloscopus collybita (Vieillot, 1817)

Menacanthus agilis (Nitzsch, 1866) – Sándor et al. (submitted)

Penenirmus rarus (Złotorzycka, 1976) – Sándor et al. (submitted)

Family: Acrocephalidae

Acrocephalus arundinaceus (Linnaeus, 1758)

Philopterus fedorenkoae (Mey, 1983) – Adam & Sándor (2004); Sándor et al. (submitted)

Acrocephalus palustris (Bechstein, 1798)

Menacanthus currucae (Schrank, 1776) – Sándor et al. (submitted)

Acrocephalus schoenobaenus (Linnaeus, 1758)

Menacanthus currucae (Schrank, 1776) – Sándor et al. (submitted)

Family: Sylviidae

- Sylvia atricapilla* (Linnaeus, 1758)
Menacanthus currucae (Schrank, 1776) – *Sándor et al.* (submitted)
Sylvia borin (Boddaert, 1783)
Penenirmus affectator (Złotorzycka, 1976) – *Rékási & Kiss (1997)*
Sylvia curruca (Linnaeus, 1758)
Brueelia currucae Bechet, 1961 – *Sándor et al.* (submitted)
Penenirmus speciosus Mey, 1982 – *Sándor et al.* (submitted)

Family: Muscipidae

- Ficedula hypoleuca* (Pallas, 1764)
Philopterus capillatus (Złotorzycka, 1964) – *Rékási & Kiss (1997)*
Phoenicurus ochruros (S. G. Gmelin, 1774)
Penenirmus barusi Balát, 1981 – *Sándor et al.* (submitted)

Family: Turdidae

- Turdus merula* Linnaeus, 1758
Brueelia amsel (Eichler, 1951) – *Sándor et al.* (submitted)
Brueelia merulensis (Denny, 1842) – *Rékási & Kiss (1984; 1997); Sándor et al.* (submitted)
Menacanthus eurysternus (Burmeister, 1838) – *Sándor et al.* (submitted)
Myrsidea thoracica (Giebel, 1874) – *Sándor et al.* (submitted)
Philopterus turdi (Denny, 1842) – *Rékási & Kiss (1997); Sándor et al.* (submitted)
Ricinus elongatus (Olfers, 1816) – *Sándor et al.* (submitted)
Turdus philomelos Brehm, 1831
Brueelia tasniemae Ansari, 1957 – *Sándor et al.* (submitted)
Menacanthus eurysternus (Burmeister, 1838) – *Sándor et al.* (submitted)
Philopterus turdi (Denny, 1842) – *Rékási & Kiss (1997); Sándor et al.* (submitted)
Turdus pilaris Linnaeus, 1758
Brueelia marginata (Burmeister, 1838) – *Rékási & Kiss (1977; 1980; 1984; 1997)*
Philopterus bischoffi (Eichler, 1951) – *Rékási & Kiss (1980; 1984; 1997)*
Ricinus elongatus (Olfers, 1816) – *Rékási & Kiss (1980; 1997)*

Family: Sturnidae

- Pastor roseus* (Linnaeus, 1758)
Brueelia fuscopleura (Blagovescenskii, 1951) – *Bechet (1961); Sándor et al.* (submitted)
Sturnidoecus pastoris (Denny, 1842) – *Sándor et al.* (submitted)
Sturnus vulgaris (Linnaeus, 1758)
Brueelia nebulosa (Burmeister, 1838) – *Bechet (1962); Sándor et al.* (submitted)
Myrsidea cucullaris (Nitzsch, 1818) – *Bechet (1961); Rékási & Kiss (1980); Sándor et al.* (submitted)
Sturnidoecus sturni (Schrank, 1776) – *Bechet (1962); Rékási & Kiss (1977; 1980; 1997); Sándor et al.* (submitted)

Family: Motacillidae

- Motacilla alba* Linnaeus, 1758
Philopterus passerinus (Denny, 1842) – *Rékási & Kiss (1997)*
Motacilla flava Linnaeus, 1758
Brueelia kratochvili Balát, 1958 – *Sándor et al.* (submitted)

Family: Emberizidae

- Emberiza citrinella* Linnaeus, 1758
Philopterus citrinellae (Schrank, 1776) – *Rékási & Kiss (1984)*
Emberiza schoeniclus Linnaeus, 1758
Menacanthus eurysternus (Burmeister, 1838) – *Sándor et al.* (submitted)
Philopterus residuus (Złotorzycka, 1964) – *Rékási & Kiss (1984; 1997; 2006a)*

Family: Fringillidae

- Carduelis carduelis* (Linnaeus, 1758)
Brueelia densilimba (Nitzsch, 1866) – Rékási & Kiss (1984)
Philopterus citrinellae (Schrank, 1776) – Rékási & Kiss (1984)
Chloris chloris (Linnaeus, 1758)
Brueelia breueri Balát, 1955 – Rékási & Kiss (1984)
Philopterus citrinellae (Schrank, 1776) – Rékási & Kiss (1984)
Coccothraustes coccothraustes Linnaeus, 1758
Brueelia junco (Giebel, 1874) – Rékási & Kiss (1984)
Fringilla coelebs Linnaeus, 1758
Menacanthus eurysternus (Burmeister, 1838) – Sándor *et al.* (submitted)
Fringilla montifringilla Linnaeus, 1758
Philopterus rapax (Złotorzycka, 1964) – Rékási & Kiss (1980; 1997)
Pyrrhula pyrrhula (Linnaeus, 1758)
Philopterus citrinellae (Schrank, 1776) – Rékási & Kiss (1997)
Spinus spinus (Linnaeus, 1758)
Philopterus citrinellae (Schrank, 1776) – Sándor *et al.* (submitted)

Family: Passeridae

- Passer domesticus* (Linnaeus, 1758)
Brueelia cyclothorax (Burmeister, 1838) – Bechet (1962); Rékási & Kiss (1980; 1997; 2006a)
Philopterus fringillae (Scopoli, 1772) – Bechet (1962); Rékási & Kiss (1980; 2006a); Sándor *et al.* (submitted)
Sturnidoecus refractariolus (Złotorzycka, 1964) – Rékási & Kiss (1997)
Passer hispaniolensis (Temminck, 1820)
Philopterus fringillae (Scopoli, 1772) – Rékási & Kiss (1977)
Passer montanus (Linnaeus, 1758)
Brueelia cyclothorax (Burmeister, 1838) – Rékási & Kiss (1980; 1997)
Philopterus montani (Złotorzycka, 1964) – Rékási & Kiss (1997)
Sturnidoecus ruficeps (Nitzsch, 1866) – Rékási & Kiss (1980; 1997)

The checklist of louse-host associations recorded in the DDBR, according to louse family and species. Order Amblycera

LOUSE SPECIES	HOST SPECIES
Family Laemobothriidae	
<i>Laemobothrion atrum</i> (Nitzsch, 1818)	<i>Fulica atra</i> Linnaeus, 1758
<i>Laemobothrion maximum</i> (Scopoli, 1763)	<i>Buteo rufinus</i> (Cretzschmar, 1829) <i>Hieraaetus pennatus</i> (Gmelin, 1788)
Family Menoponidae	
<i>Actornithophilus bicolor</i> (Piaget, 1880)	<i>Arenaria interpres</i> (Linnaeus, 1758)
<i>Actornithophilus gracilis</i> (Piaget, 1880)	<i>Vanellus vanellus</i> (Linnaeus, 1758)
<i>Actornithophilus grandiceps</i> (Piaget, 1880)	<i>Haematopus ostralegus</i> Linnaeus, 1758
<i>Actornithophilus himantopi</i> (Blagovescenskii, 1951)	<i>Himantopus himantopus</i> (Linnaeus, 1758)
<i>Actornithophilus ochraceus</i> (Nitzsch, 1818)	<i>Charadrius alexandrinus</i> Linnaeus, 1758 <i>Pluvialis apricaria</i> (Linnaeus, 1758) <i>Vanellus vanellus</i> (Linnaeus, 1758)
<i>Actornithophilus patellatus</i> (Piaget, 1890)	<i>Numenius arquata</i> (Linnaeus, 1758)
<i>Actornithophilus piceus</i> Denny, 1842	<i>Sterna hirundo</i> Linnaeus, 1758
<i>Actornithophilus pustulosus</i> (Piaget, 1880)	<i>Philomachus pugnax</i> (Linnaeus, 1758)
<i>Actornithophilus sedes</i> Eichler, 1944	<i>Glareola pratincola</i> Linnaeus, 1766
<i>Actornithophilus spinulosus</i> (Piaget, 1880)	<i>Limosa limosa</i> (Linnaeus, 1758)
<i>Actornithophilus totani</i> (Schrank, 1803)	<i>Tringa erythropus</i> (Pallas, 1764) <i>Tringa totanus</i> (Linnaeus, 1758)

LOUSE SPECIES	HOST SPECIES
<i>Actornithophilus umbrinus</i> (Burmeister, 1838)	<i>Calidris alba</i> (Pallas, 1764) <i>Calidris minuta</i> (Leisler, 1812)
<i>Amyrsidea fulvomaculata</i> (Denny, 1842)	<i>Coturnix coturnix</i> (Linnaeus, 1758)
<i>Amyrsidea perdicis</i> (Denny, 1842)	<i>Perdix perdix</i> (Linnaeus, 1758) <i>Phasianus colchicus</i> Linnaeus, 1758
<i>Ardeiphilus trochioxus</i> (Burmeister, 1838)	<i>Botaurus stellaris</i> (Linnaeus, 1758)
<i>Ardeiphilus vittatus</i> (Rudow, 1866)	<i>Ardeola ralloides</i> (Scopoli, 1769)
<i>Austromenopon alpinum</i> (Timmermann, 1954)	<i>Calidris alpina</i> (Linnaeus, 1758)
<i>Austromenopon atrofulvum</i> (Piaget, 1880)	<i>Sterna hirundo</i> Linnaeus, 1758
<i>Austromenopon crocatum</i> (Nitzsch, 1866)	<i>Numenius arquata</i> (Linnaeus, 1758)
<i>Austromenopon fuscofasciatum</i> (Piaget, 1880)	<i>Stercorarius parasiticus</i> (Linnaeus, 1758)
<i>Austromenopon himantopi</i> (Timmermann, 1954)	<i>Himantopus himantopus</i> (Linnaeus, 1758)
<i>Austromenopon hystriculum</i> (Zlotorzycska, 1968)	<i>Actitis hypoleucos</i> (Linnaeus, 1758)
<i>Austromenopon icterum</i> (Burmeister, 1838)	<i>Scolopax rusticola</i> Linnaeus, 1758
<i>Austromenopon limosae</i> Timmermann, 1954	<i>Limosa limosa</i> (Linnaeus, 1758)
<i>Austromenopon lutescens</i> (Burmeister, 1838)	<i>Calidris minuta</i> (Leisler, 1812) <i>Charadrius dubius</i> Scopoli, 1786 <i>Philomachus pugnax</i> (Linnaeus, 1758)
<i>Austromenopon phaeopodis</i> (Schrank, 1802)	<i>Numenius phaeopus</i> (Linnaeus, 1758)
<i>Austromenopon transversum</i> (Denny, 1842)	<i>Chroicocephalus ridibundus</i> (Linnaeus, 1758) <i>Ichthyaetus ichthyaetus</i> (Pallas, 1773) <i>Ichthyaetus melanocephalus</i> (Temminck, 1820) <i>Larus fuscus</i> Linnaeus, 1758
<i>Ciconiphilus cygni</i> Price & Beer, 1965	<i>Cygnus olor</i> (Gmelin, 1789)
<i>Ciconiphilus decimfasciatus</i> (Boisduval & Lacordaire, 1835)	<i>Ardea alba</i> (Linnaeus, 1758) <i>Ardea cinerea</i> Linnaeus, 1758 <i>Egretta garzetta</i> (Linnaeus, 1758) <i>Ixobrychus minutus</i> (Linnaeus, 1766) <i>Nycticorax nycticorax</i> (Linnaeus, 1758)
<i>Ciconiphilus pectiniventris</i> (Harrison, 1916)	<i>Anser anser</i> (Linnaeus, 1758) <i>Branta ruficollis</i> (Pallas, 1769)
<i>Colpocephalum apivorus</i> Tendeiro, 1958	<i>Pernis apivorus</i> (Linnaeus, 1758)
<i>Colpocephalum eucarenum</i> Burmeister, 1838	<i>Pelecanus onocrotalus</i> Linnaeus, 1758
<i>Colpocephalum flavescens</i> (De Haan, 1829)	<i>Clanga pomarina</i> Brehm, 1831 <i>Haliaeetus albicilla</i> (Linnaeus, 1758)
<i>Colpocephalum fregili</i> (Denny, 1842)	<i>Corvus frugilegus</i> Linnaeus, 1758
<i>Colpocephalum imperialis</i> Martin Mateo, 1981	<i>Aquila heliaca</i> Savigny, 1809
<i>Colpocephalum inaequale</i> Burmeister, 1838	<i>Dryocopus martius</i> (Linnaeus, 1758)
<i>Colpocephalum leptopygos</i> (Nitzsch, 1874)	<i>Plegadis falcinellus</i> Linnaeus, 1766
<i>Colpocephalum nanum</i> (Piaget, 1890)	<i>Buteo lagopus</i> (Pontoppidan, 1763)
<i>Colpocephalum zebra</i> (Burmeister, 1838)	<i>Ciconia ciconia</i> (Linnaeus, 1758)
<i>Eidmanniella pellucida</i> (Rudow, 1869)	<i>Phalacrocorax carbo</i> (Linnaeus, 1758) <i>Phalacrocorax pygmeus</i> (Pallas, 1773)
<i>Eucolpocephalum femorale</i> (Piaget, 1880)	<i>Platalea leucorodia</i> Linnaeus, 1758
<i>Hohorstiella streptopeliae</i> (Eichler, 1940)	<i>Streptopelia turtur</i> (Linnaeus, 1758)
<i>Holomenopon clypeilargum</i> Eichler, 1943	<i>Mergus merganser</i> Linnaeus, 1758
<i>Holomenopon leucoxanthum</i> (Burmeister, 1838)	<i>Anas crecca</i> Linnaeus, 1758 <i>Anas penelope</i> Linnaeus, 1758 <i>Anas querquedula</i> Linnaeus, 1758 <i>Aythya fuligula</i> (Linnaeus, 1758) <i>Aythya nyroca</i> (Güldenstädt, 1770) <i>Netta rufina</i> (Pallas, 1773)
<i>Holomenopon setigerum</i> (Blagovescenskii, 1948)	<i>Anas clypeata</i> Linnaeus, 1758

List of chewing lice in the Danube Delta

LOUSE SPECIES	HOST SPECIES
<i>Holomenopon tadornae</i> (Gervais, 1844)	<i>Tadorna ferruginea</i> (Pallas, 1764)
<i>Holomenopon transvaalense</i> (Bedford, 1920)	<i>Anas platyrhynchos</i> Linnaeus, 1758
<i>Kurodaia longipes</i> (Giebel, 1874)	<i>Bubo bubo</i> (Linnaeus, 1758)
<i>Menacanthus abdominalis</i> (Piaget, 1880)	<i>Coturnix coturnix</i> (Linnaeus, 1758)
<i>Menacanthus agilis</i> (Nitzsch, 1866)	<i>Phylloscopus collybita</i> (Vieillot, 1817)
<i>Menacanthus camelinus</i> (Nitzsch, 1874)	<i>Lanius collurio</i> Linnaeus, 1758 <i>Lanius minor</i> Gmelin, 1788
<i>Menacanthus currucae</i> (Schrank, 1776)	<i>Acrocephalus palustris</i> (Bechstein, 1798) <i>Acrocephalus schoenobaenus</i> (Linnaeus, 1758) <i>Sylvia atricapilla</i> (Linnaeus, 1758) <i>Acrocephalus palustris</i> (Bechstein, 1798)
<i>Menacanthus eurysternus</i> (Burmeister, 1838)	<i>Corvus cornix</i> (Linnaeus, 1758) <i>Emberiza schoeniclus</i> Linnaeus, 1758 <i>Fringilla coelebs</i> Linnaeus, 1758 <i>Panurus biarmicus</i> (Linnaeus, 1758) <i>Pica pica</i> (Linnaeus, 1758) <i>Regulus regulus</i> (Linnaeus, 1758) <i>Turdus merula</i> Linnaeus, 1758 <i>Turdus philomelos</i> Brehm, 1831 <i>Sturnus vulgaris</i> (Linnaeus, 1758)
<i>Menacanthus oriolii</i> Blagovescenskii, 1951	<i>Oriolus oriolus</i> (Linnaeus, 1758)
<i>Menacanthus pici</i> (Denny, 1842)	<i>Picus canus</i> Gmelin, 1788
<i>Menacanthus tenuifrons</i> Blagovescenskii, 1940	<i>Troglodytes troglodytes</i> (Linnaeus, 1758)
<i>Menopon pallens</i> (Clay, 1949)	<i>Perdix perdix</i> (Linnaeus, 1758)
<i>Meromenopon meropis</i> Clay & Meinertzhagen, 1941	<i>Merops apiaster</i> Linnaeus, 1758
<i>Myrsidea anathorax</i> (Nitzsch, 1866)	<i>Corvus monedula</i> (Linnaeus, 1758)
<i>Myrsidea brunnea</i> (Nitzsch, 1866)	<i>Nucifraga caryocatactes</i> (Linnaeus, 1758)
<i>Myrsidea cornicis</i> (De Geer, 1776)	<i>Corvus cornix</i> (Linnaeus, 1758)
<i>Myrsidea cucullaris</i> (Nitzsch, 1818)	<i>Sturnus vulgaris</i> (Linnaeus, 1758)
<i>Myrsidea indivisa</i> (Nitzsch, 1866)	<i>Garrulus glandarius</i> (Linnaeus, 1758)
<i>Myrsidea isostoma</i> (Nitzsch, 1866)	<i>Corvus cornix</i> (Linnaeus, 1758) <i>Corvus frugilegus</i> Linnaeus, 1758
<i>Myrsidea picae</i> (Linnaeus, 1758)	<i>Pica pica</i> (Linnaeus, 1758)
<i>Myrsidea rustica</i> (Giebel, 1874)	<i>Hirundo rustica</i> (Linnaeus, 1758)
<i>Myrsidea thoracica</i> (Giebel, 1874)	<i>Turdus merula</i> Linnaeus, 1758
<i>Piagetiella titan</i> (Piaget, 1880)	<i>Pelecanus crispus</i> Bruch, 1832 <i>Pelecanus onocrotalus</i> Linnaeus, 1758
<i>Plegadiphilus plegadis</i> (Dubinin, 1938)	<i>Plegadis falcinellus</i> Linnaeus, 1766
<i>Pseudomenopon dolium</i> (Rudow, 1869)	<i>Podiceps cristatus</i> (Linnaeus, 1758) <i>Podiceps nigricollis</i> Brehm, 1831
<i>Pseudomenopon pilosum</i> (Scopoli, 1763)	<i>Fulica atra</i> Linnaeus, 1758 <i>Gallinula chloropus</i> (Linnaeus, 1758)
<i>Pseudomenopon scopulacorne</i> (Denny, 1842)	<i>Rallus aquaticus</i> Linnaeus, 1758
<i>Trinoton anserinum</i> (J.C. Fabricius, 1805)	<i>Anser albifrons</i> (Scopoli, 1769) <i>Anser anser</i> (Linnaeus, 1758) <i>Aythya nyroca</i> (Güldenstädt, 1770)
<i>Trinoton querquedulae</i> (Linnaeus, 1758)	<i>Anas acuta</i> Linnaeus, 1758 <i>Anas crecca</i> Linnaeus, 1758 <i>Anas penelope</i> Linnaeus, 1758 <i>Anas platyrhynchos</i> Linnaeus, 1758 <i>Anas querquedula</i> Linnaeus, 1758 <i>Anas strepera</i> Linnaeus, 1758 <i>Aythya nyroca</i> (Güldenstädt, 1770)

LOUSE SPECIES	HOST SPECIES
	<i>Mergellus albellus</i> (Linnaeus, 1758)
	<i>Netta rufina</i> (Pallas, 1773)
Family Ricinidae	
<i>Ricinus elongatus</i> (Olfers, 1816)	<i>Turdus merula</i> Linnaeus, 1758
	<i>Turdus pilaris</i> Linnaeus, 1758

The checklist of louse-host associations recorded in the DDBR, according to louse family and species. Order Ischnocera

LOUSE SPECIES	HOST SPECIES
Family Philopteridae	
<i>Acidoproctus moschatae</i> (Linnaeus, 1758)	<i>Netta rufina</i> (Pallas, 1773)
<i>Alcedoffula alcedinis</i> (Denny, 1842)	<i>Alcedo atthis</i> (Linnaeus, 1758)
<i>Anaticola anseris</i> (Linnaeus, 1758)	<i>Anser albifrons</i> (Scopoli, 1769)
	<i>Anser anser</i> (Linnaeus, 1758)
<i>Anaticola beieri</i> Eichler, 1954	<i>Branta ruficollis</i> (Pallas, 1769)
<i>Anaticola clangulae</i> (Fabricius, 1780)	<i>Bucephala clangula</i> (Linnaeus, 1758)
<i>Anaticola crassicornis</i> (Scopoli, 1763)	<i>Anas acuta</i> Linnaeus, 1758
	<i>Anas clypeata</i> Linnaeus, 1758
	<i>Anas crecca</i> Linnaeus, 1758
	<i>Anas penelope</i> Linnaeus, 1758
	<i>Anas platyrhynchos</i> Linnaeus, 1758
	<i>Anas querquedula</i> Linnaeus, 1758
	<i>Anas strepera</i> Linnaeus, 1758
	<i>Aythya ferina</i> (Linnaeus, 1758)
	<i>Aythya fuligula</i> (Linnaeus, 1758)
	<i>Aythya nyroca</i> (Güldenstädt, 1770)
<i>Anaticola mergiserrati</i> (De Geer, 1788)	<i>Mergellus albellus</i> (Linnaeus, 1758)
	<i>Mergus serrator</i> Linnaeus, 1758
<i>Anaticola tadornae</i> (Denny, 1842)	<i>Tadorna ferruginea</i> (Pallas, 1764)
	<i>Tadorna tadorna</i> (Linnaeus, 1758)
<i>Anatoecus dentatus</i> (Scopoli, 1763)	<i>Anas querquedula</i> Linnaeus, 1758
	<i>Anas clypeata</i> Linnaeus, 1758
	<i>Anas crecca</i> Linnaeus, 1758
	<i>Anas platyrhynchos</i> Linnaeus, 1758
	<i>Anas querquedula</i> Linnaeus, 1758
	<i>Aythya nyroca</i> (Güldenstädt, 1770)
	<i>Cygnus olor</i> (Gmelin, 1789)
	<i>Mergellus albellus</i> (Linnaeus, 1758)
<i>Anatoecus icterodes</i> (Nitzsch, 1818)	<i>Anas acuta</i> Linnaeus, 1758
	<i>Anas crecca</i> Linnaeus, 1758
	<i>Anas penelope</i> Linnaeus, 1758
	<i>Anas platyrhynchos</i> Linnaeus, 1758
	<i>Anser albifrons</i> (Scopoli, 1769)
	<i>Anser anser</i> (Linnaeus, 1758)
	<i>Aythya fuligula</i> (Linnaeus, 1758)
	<i>Aythya nyroca</i> (Güldenstädt, 1770)
	<i>Branta ruficollis</i> (Pallas, 1769)
	<i>Mergellus albellus</i> (Linnaeus, 1758)
	<i>Mergus merganser</i> Linnaeus, 1758
	<i>Mergus serrator</i> Linnaeus, 1758
	<i>Netta rufina</i> (Pallas, 1773)

List of chewing lice in the Danube Delta

LOUSE SPECIES	HOST SPECIES
<i>Aquanirmus colymbinus</i> (Scopoli, 1763)	<i>Podiceps nigricollis</i> Brehm, 1831
<i>Aquanirmus emersoni</i> Edwards, 1965	<i>Podiceps grisegena</i> (Boddaert, 1783)
<i>Aquanirmus podiceps</i> (Denny, 1842)	<i>Podiceps cristatus</i> (Linnaeus, 1758)
<i>Ardeicola ardeae</i> (Linnaeus, 1758)	<i>Ardea cinerea</i> Linnaeus, 1758
	<i>Ardea purpurea</i> (Linnaeus, 1766)
<i>Ardeicola expallidus</i> (Blagovescenskii, 1940)	<i>Ardea alba</i> (Linnaeus, 1758)
	<i>Egretta garzetta</i> (Linnaeus, 1758)
<i>Ardeicola goisagi</i> (Uchida, 1954)	<i>Nycticorax nycticorax</i> (Linnaeus, 1758)
<i>Ardeicola leucoproctus</i> (Nitzsch, 1866)	<i>Ardea purpurea</i> (Linnaeus, 1766)
<i>Ardeicola plataleae</i> (Linnaeus, 1758)	<i>Platalea leucorodia</i> Linnaeus, 1758
<i>Ardeicola raphidius</i> (Nitzsch, 1866)	<i>Plegadis falcinellus</i> Linnaeus, 1766
<i>Ardeicola stellaris</i> (Denny, 1842)	<i>Botaurus stellaris</i> (Linnaeus, 1758)
<i>Brueelia amsel</i> (Eichler, 1951)	<i>Turdus merula</i> Linnaeus, 1758
<i>Brueelia apiastri</i> (Denny, 1842)	<i>Merops apiaster</i> Linnaeus, 1758
<i>Brueelia breueri</i> Balát, 1955	<i>Chloris chloris</i> (Linnaeus, 1758)
<i>Brueelia currucae</i> Bechet, 1961	<i>Sylvia curruca</i> (Linnaeus, 1758)
<i>Brueelia cyclothorax</i> (Burmeister, 1838)	<i>Passer domesticus</i> (Linnaeus, 1758)
	<i>Passer montanus</i> (Linnaeus, 1758)
<i>Brueelia densilimba</i> (Nitzsch, 1866)	<i>Carduelis carduelis</i> (Linnaeus, 1758)
<i>Brueelia domestica</i> (Kellog & Chapman, 1899)	<i>Hirundo rustica</i> (Linnaeus, 1758)
<i>Brueelia fuscopleura</i> (Blagovescenskii, 1951)	<i>Pastor roseus</i> (Linnaeus, 1758)
<i>Brueelia glandarii</i> (Denny, 1842)	<i>Garrulus glandarius</i> (Linnaeus, 1758)
<i>Brueelia juno</i> (Giebel, 1874)	<i>Coccothraustes coccothraustes</i> Linnaeus, 1758
<i>Brueelia kratochvili</i> Balát, 1958	<i>Motacilla flava</i> Linnaeus, 1758
<i>Brueelia marginata</i> (Burmeister, 1838)	<i>Turdus pilaris</i> Linnaeus, 1758
<i>Brueelia merulensis</i> (Denny, 1842)	<i>Turdus merula</i> Linnaeus, 1758
<i>Brueelia munda</i> (Nitzsch, 1866)	<i>Oriolus oriolus</i> (Linnaeus, 1758)
<i>Brueelia nebulosa</i> (Burmeister, 1838)	<i>Sturnus vulgaris</i> (Linnaeus, 1758)
<i>Brueelia perforata</i> (Zlotorzyska, 1964)	<i>Corvus frugilegus</i> Linnaeus, 1758
<i>Brueelia tasniemae</i> Ansari, 1957	<i>Corvus frugilegus</i> Linnaeus, 1758
<i>Brueelia uncinosa</i> (Burmeister, 1838)	<i>Corvus cornix</i> (Linnaeus, 1758)
<i>Campanulotes bidentatus</i> (Scopoli, 1763)	<i>Columba oenas</i> Linnaeus, 1758
	<i>Columba palumbus</i> Linnaeus, 1758
<i>Campanulotes compar</i> (Burmeister, 1838)	<i>Columba livia</i> var. <i>domestica</i> Gmelin, 1789
	<i>Streptopelia decaocto</i> (Frivaldszky, 1838)
<i>Capraiella subcuspidata</i> (Burmeister, 1838)	<i>Coracias garrulus</i> Linnaeus, 1758
<i>Carduiceps cingulatus</i> (Denny, 1842)	<i>Limosa limosa</i> (Linnaeus, 1758)
<i>Carduiceps fulvofasciatus</i> (Grube, 1851)	<i>Calidris ferruginea</i> (Pontoppidan, 1763)
<i>Carduiceps meinertzhageni</i> (Timmermann, 1954)	<i>Calidris alpina</i> (Linnaeus, 1758)
<i>Carduiceps scalaris</i> (Piaget, 1880)	<i>Philomachus pugnax</i> (Linnaeus, 1758)
<i>Coloceras britannicum</i> Tendeiro, 1973	<i>Streptopelia turtur</i> (Linnaeus, 1758)
<i>Coloceras damicornis</i> (Nitzsch, 1866)	<i>Columba palumbus</i> Linnaeus, 1758
<i>Coloceras piageti</i> (Johnston & Harrison, 1912)	<i>Streptopelia decaocto</i> (Frivaldszky, 1838)
<i>Columbicola bacillus</i> (Giebel, 1866)	<i>Streptopelia decaocto</i> (Frivaldszky, 1838)
	<i>Streptopelia turtur</i> (Linnaeus, 1758)
<i>Columbicola claviformis</i> (Denny, 1842)	<i>Columba palumbus</i> Linnaeus, 1758
<i>Columbicola columbae</i> (Linnaeus, 1758)	<i>Columba livia</i> var. <i>domestica</i> Gmelin, 1789
	<i>Columba oenas</i> Linnaeus, 1758
<i>Craspedonirmus colymbinus</i> (Denny, 1842)	<i>Gavia arctica</i> (Linnaeus, 1758)
	<i>Gavia immer</i> (Brunnich, 1764)
<i>Craspedorrhynchus dilatatus</i> (Rudow, 1869)	<i>Buteo buteo</i> (Linnaeus, 1758)
	<i>Buteo lagopus</i> (Pontoppidan, 1763)

LOUSE SPECIES	HOST SPECIES
<i>Craspedorrhynchus fraterculus</i> (Eichler & Zlotorzycza, 1975)	<i>Aquila heliaca</i> Savigny, 1810
<i>Craspedorrhynchus macrocephalus</i> (Nitzsch, 1874)	<i>Clanga pomarina</i> Brehm, 1832 <i>Haliaeetus albicilla</i> (Linnaeus, 1758)
<i>Craspedorrhynchus melittoscopus</i> (Nitzsch, 1874)	<i>Pernis apivorus</i> (Linnaeus, 1758)
<i>Craspedorrhynchus naevius</i> (Giebel, 1861)	<i>Clanga pomarina</i> Brehm, 1833
<i>Craspedorrhynchus platystomus</i> (Burmeister, 1838)	<i>Buteo buteo</i> (Linnaeus, 1758) <i>Buteo lagopus</i> (Pontoppidan, 1763)
<i>Craspedorrhynchus rotundatus</i> (Piaget, 1880)	<i>Circus aeruginosus</i> (Linnaeus, 1758)
<i>Cuculogaster cinereus</i> (Nitzsch, 1866)	<i>Coturnix coturnix</i> (Linnaeus, 1758)
<i>Cuculoecus latifrons</i> (Denny, 1842)	<i>Cuculus canorus</i> (Linnaeus, 1758)
<i>Cummingsiella ambigua</i> (Burmeister, 1838)	<i>Gallinago gallinago</i> (Linnaeus, 1758)
<i>Cummingsiella aurea</i> Hopkins, 1949	<i>Scolopax rusticola</i> Linnaeus, 1758
<i>Cummingsiella brelihi</i> Timmermann, 1969	<i>Scolopax rusticola</i> Linnaeus, 1758
<i>Cummingsiella ovalis</i> (Scopoli, 1763)	<i>Numenius arquata</i> (Linnaeus, 1758)
<i>Degeeriella discocephalus</i> (Burmeister, 1838)	<i>Haliaeetus albicilla</i> (Linnaeus, 1758)
<i>Degeeriella fulva</i> (Giebel, 1874)	<i>Buteo buteo</i> (Linnaeus, 1758)
<i>Degeeriella fusca</i> (Denny, 1842)	<i>Circus aeruginosus</i> (Linnaeus, 1758)
<i>Degeeriella nisus</i> (Giebel, 1866)	<i>Accipiter nisus</i> (Linnaeus, 1758)
<i>Degeeriella phlyctopygus</i> (Nitzsch, 1861)	<i>Pernis apivorus</i> (Linnaeus, 1758)
<i>Degeeriella rufa</i> (Burmeister, 1838)	<i>Falco subbuteo</i> Linnaeus, 1758 <i>Falco tinnunculus</i> Linnaeus, 1758
<i>Esthiopterus gruis</i> (Linnaeus, 1758)	<i>Grus grus</i> (Linnaeus, 1758)
<i>Falcolipeurus sulcifrons</i> (Denny, 1842)	<i>Haliaeetus albicilla</i> (Linnaeus, 1758)
<i>Fulicoffula lurida</i> (Nitzsch, 1818)	<i>Fulica atra</i> Linnaeus, 1758
<i>Goniocotes chrysocephalus</i> Giebel, 1874	<i>Phasianus colchicus</i> Linnaeus, 1758
<i>Goniocotes microthorax</i> (Stephens, 1829)	<i>Perdix perdix</i> (Linnaeus, 1758)
<i>Goniodes astrocephalus</i> (Burmeister, 1838)	<i>Coturnix coturnix</i> (Linnaeus, 1758)
<i>Goniodes colchici</i> (Denny, 1842)	<i>Phasianus colchicus</i> Linnaeus, 1758
<i>Goniodes dispar</i> Burmeister, 1838	<i>Perdix perdix</i> (Linnaeus, 1758)
<i>Halipeurus diversus</i> (Kellogg, 1896)	<i>Puffinus yelkouan</i> (Acerbi, 1827)
<i>Ibidoecus bisignatus</i> (Nitzsch, 1866)	<i>Plegadis falcinellus</i> Linnaeus, 1766
<i>Ibidoecus plataleae</i> (Denny, 1842)	<i>Platalea leucorodia</i> Linnaeus, 1758
<i>Incidifrons fulicae</i> (Linnaeus, 1758)	<i>Fulica atra</i> Linnaeus, 1758
<i>Incidifrons gallinulae</i> Blagovescenskii, 1951	<i>Gallinula chloropus</i> (Linnaeus, 1758)
<i>Lipeurus maculosus</i> Clay, 1938	<i>Phasianus colchicus</i> Linnaeus, 1758
<i>Lunaceps actophilus</i> (Kellogg & Chapman, 1899)	<i>Calidris alba</i> (Pallas, 1764)
<i>Lunaceps holophaeus</i> (Burmeister, 1838)	<i>Vanellus vanellus</i> (Linnaeus, 1758) <i>Calidris alpina</i> (Linnaeus, 1758) <i>Philomachus pugnax</i> (Linnaeus, 1758)
<i>Lunaceps limosella</i> Timmermann, 1954	<i>Limosa limosa</i> (Linnaeus, 1758)
<i>Lunaceps numenii</i> (Denny, 1842)	<i>Numenius arquata</i> (Linnaeus, 1758)
<i>Lunaceps numenii phaeopi</i> (Denny, 1842)	<i>Numenius phaeopus</i> (Linnaeus, 1758)
<i>Meropoeus meropis</i> (Denny, 1842)	<i>Merops apiaster</i> Linnaeus, 1758
<i>Multicola hypoleucus</i> (Denny, 1842)	<i>Caprimulgus europaeus</i> Linnaeus, 1758
<i>Neophilopterus incompletus</i> (Denny, 1842)	<i>Ciconia ciconia</i> (Linnaeus, 1758)
<i>Ornithobius bucephalus</i> (Giebel, 1874)	<i>Cygnus olor</i> (Gmelin, 1789)
<i>Ornithobius cygni</i> (Linnaeus, 1758)	<i>Cygnus cygnus</i> (Linnaeus, 1758)
<i>Ornithobius mathisi</i> (Neumann, 1912)	<i>Anser anser</i> (Linnaeus, 1758)
<i>Oxylipeurus colchicus</i> Clay, 1938	<i>Phasianus colchicus</i> Linnaeus, 1758
<i>Pectinopygus dispar</i> (Piaget, 1880)	<i>Phalacrocorax carbo</i> (Linnaeus, 1758)
<i>Pectinopygus excornis</i> (Blagovescenskii, 1940)	<i>Phalacrocorax pygmeus</i> (Pallas, 1773)

List of chewing lice in the Danube Delta

LOUSE SPECIES	HOST SPECIES
<i>Pectinopygus forficulatus</i> (Nitzsch, 1866)	<i>Pelecanus onocrotalus</i> Linnaeus, 1758
<i>Pectinopygus gyricornis</i> (Denny, 1842)	<i>Phalacrocorax carbo</i> (Linnaeus, 1758) <i>Phalacrocorax pygmeus</i> (Pallas, 1773)
<i>Penenirmus affectator</i> (Złotorzycka, 1976)	<i>Sylvia borin</i> (Boddaert, 1783)
<i>Penenirmus albiventris</i> (Scopoli, 1763)	<i>Troglodytes troglodytes</i> (Linnaeus, 1758)
<i>Penenirmus auritus</i> (Scopoli, 1763)	<i>Dendrocopos major</i> (Linnaeus, 1758) <i>Dendrocopos syriacus</i> (Hemprich & Ehrenberg, 1833) <i>Picus canus</i> Gmelin, 1789
<i>Penenirmus barusi</i> Balát, 1981	<i>Phoenicurus ochruros</i> (S. G. Gmelin, 1774)
<i>Penenirmus heteroscelis</i> (Nitzsch, 1866)	<i>Dryocopus martius</i> (Linnaeus, 1758)
<i>Penenirmus pari</i> (Denny, 1842)	<i>Cyanistes caeruleus</i> (Linnaeus, 1758)
<i>Penenirmus rarus</i> (Złotorzycka, 1976)	<i>Phylloscopus collybita</i> (Vieillot, 1817)
<i>Penenirmus speciosus</i> Mey, 1982	<i>Sylvia curruca</i> (Linnaeus, 1758)
<i>Penenirmus visendus</i> (Złotorzycka, 1964)	<i>Panurus biarmicus</i> (Linnaeus, 1758)
<i>Philopterus alexanderkoenigi</i> (Eichler, 1953)	<i>Galerida cristata</i> (Linnaeus, 1758)
<i>Philopterus arboreus</i> Fedorenko, 1984	<i>Lullula arborea</i> (Linnaeus, 1758)
<i>Philopterus atratus</i> Nitzsch, 1818	<i>Corvus frugilegus</i> Linnaeus, 1758
<i>Philopterus bischoffi</i> (Eichler, 1951)	<i>Turdus pilaris</i> Linnaeus, 1758
<i>Philopterus capillatus</i> (Złotorzycka, 1964)	<i>Ficedula hypoleuca</i> (Pallas, 1764)
<i>Philopterus citrinellae</i> (Schrank, 1776)	<i>Emberiza citrinella</i> Linnaeus, 1758 <i>Carduelis carduelis</i> (Linnaeus, 1758) <i>Chloris chloris</i> (Linnaeus, 1758) <i>Pyrrhula pyrrhula</i> (Linnaeus, 1758) <i>Spinus spinus</i> (Linnaeus, 1758)
<i>Philopterus coarctatus</i> (Scopoli, 1763)	<i>Lanius excubitor</i> Linnaeus, 1758
<i>Philopterus corvi</i> (Linnaeus, 1758)	<i>Corvus corax</i> Linnaeus, 1758
<i>Philopterus crassipes</i> (Burmeister, 1838)	<i>Nucifraga caryocatactes</i> (Linnaeus, 1758)
<i>Philopterus excisus</i> Nitzsch, 1818	<i>Hirundo rustica</i> (Linnaeus, 1758)
<i>Philopterus fedorenkoae</i> (Mey, 1983)	<i>Acrocephalus arundinaceus</i> (Linnaeus, 1758)
<i>Philopterus fringillae</i> (Scopoli, 1772)	<i>Passer domesticus</i> (Linnaeus, 1758) <i>Passer hispaniolensis</i> (Temminck, 1820)
<i>Philopterus garruli</i> Boisduval & Lacordaire, 1835	<i>Garrulus glandarius</i> (Linnaeus, 1758)
<i>Philopterus guttatus</i> (Denny, 1842)	<i>Corvus monedula</i> (Linnaeus, 1758)
<i>Philopterus montani</i> (Złotorzycka, 1964)	<i>Passer montanus</i> (Linnaeus, 1758)
<i>Philopterus ocellatus</i> (Scopoli, 1763)	<i>Corvus cornix</i> (Linnaeus, 1758)
<i>Philopterus passerinus</i> (Denny, 1842)	<i>Motacilla alba</i> Linnaeus, 1758
<i>Philopterus picae</i> (Denny, 1842)	<i>Pica pica</i> (Linnaeus, 1758)
<i>Philopterus rapax</i> (Złotorzycka, 1964)	<i>Fringilla montifringilla</i> Linnaeus, 1758
<i>Philopterus reguli</i> (Denny, 1842)	<i>Regulus regulus</i> (Linnaeus, 1758)
<i>Philopterus residuus</i> (Złotorzycka, 1964)	<i>Emberiza schoeniclus</i> Linnaeus, 1758
<i>Philopterus stadleri</i> (Eichler, 1959)	<i>Alauda arvensis</i> Linnaeus, 1758
<i>Philopterus turdi</i> (Denny, 1842)	<i>Turdus merula</i> Linnaeus, 1758
<i>Picicola candidus</i> (Nitzsch, 1866)	<i>Dendrocopos major</i> (Linnaeus, 1758)
<i>Quadraceps anagrapsus</i> (Nitzsch, 1866)	<i>Chlidonias hybrida</i> (Pallas, 1769)
<i>Quadraceps bicuspis</i> (Nitzsch, 1874)	<i>Charadrius dubius</i> Scopoli, 1787
<i>Quadraceps caspius</i> (Giebel, 1874)	<i>Hydroprogne caspia</i> (Pallas, 1770)
<i>Quadraceps charadrii</i> (Linnaeus, 1758)	<i>Pluvialis apricaria</i> (Linnaeus, 1758)
<i>Quadraceps decipiens</i> (Denny, 1842)	<i>Recurvirostra avosetta</i> Linnaeus, 1758
<i>Quadraceps furvus</i> (Burmeister, 1838)	<i>Tringa erythropus</i> (Pallas, 1764)
<i>Quadraceps hemichrous</i> (Nitzsch, 1866)	<i>Himantopus himantopus</i> (Linnaeus, 1758)
<i>Quadraceps junceus</i> (Scopoli, 1763)	<i>Vanellus vanellus</i> (Linnaeus, 1758)
<i>Quadraceps longicollis</i> (Rudow, 1869)	<i>Thalasseus sandvicensis</i> (Latham, 1787)

LOUSE SPECIES	HOST SPECIES
<i>Quadriceps macrocephalus</i> (Waterston, 1914)	<i>Charadrius alexandrinus</i> Linnaeus, 1758
<i>Quadriceps normifer</i> (Grube, 1851)	<i>Stercorarius parasiticus</i> (Linnaeus, 1758)
<i>Quadriceps obscurus</i> (Burmeister, 1838)	<i>Tringa glareola</i> (Linnaeus, 1758) <i>Tringa stagnatilis</i> (Bechstein, 1803)
<i>Quadriceps obtusus</i> (Kellog & Kuwana, 1902)	<i>Tringa totanus</i> (Linnaeus, 1758)
<i>Quadriceps ochropi</i> (Denny, 1842)	<i>Tringa ochropus</i> Linnaeus, 1758
<i>Quadriceps ornatus</i> (Grube, 1851)	<i>Larus cachinnans</i> Pallas, 1811 <i>Rissa tridactyla</i> (Linnaeus, 1758)
<i>Quadriceps phaeonotus</i> (Nitzsch, 1866)	<i>Chlidonias niger</i> (Linnaeus, 1758)
<i>Quadriceps punctatus</i> (Burmeister, 1838)	<i>Chroicocephalus ridibundus</i> (Linnaeus, 1758) <i>Larus cachinnans</i> Pallas, 1813 <i>Larus fuscus</i> Linnaeus, 1758 <i>Thalasseus sandvicensis</i> (Latham, 1787)
<i>Quadriceps punctifer</i> Hopkins, 1949	<i>Charadrius morinellus</i> Linnaeus, 1758
<i>Quadriceps rarus</i> (Kellogg, 1899)	<i>Actitis hypoleucos</i> (Linnaeus, 1758)
<i>Quadriceps sellatus</i> (Burmeister, 1838)	<i>Sterna hirundo</i> Linnaeus, 1758
<i>Quadriceps semifissus</i> (Nitzsch, 1866)	<i>Himantopus himantopus</i> (Linnaeus, 1758)
<i>Quadriceps signatus</i> (Piaget, 1880)	<i>Recurvirostra avosetta</i> Linnaeus, 1758
<i>Quadriceps similis</i> (Giebel, 1866)	<i>Tringa nebularia</i> (Gunnerus, 1767)
<i>Quadriceps strepsilaris</i> (Denny, 1842)	<i>Arenaria interpres</i> (Linnaeus, 1758)
<i>Rallicola cuspidatus</i> (Scopoli, 1763)	<i>Rallus aquaticus</i> Linnaeus, 1758
<i>Rallicola fulicae</i> (Denny, 1842)	<i>Fulica atra</i> Linnaeus, 1758
<i>Rallicola minutus</i> (Nitzsch, 1866)	<i>Gallinula chloropus</i> (Linnaeus, 1758)
<i>Rallicola mystax</i> (Giebel, 1874)	<i>Porzana porzana</i> (Linnaeus, 1766)
<i>Rhynonirmus helvolus</i> (Burmeister, 1838)	<i>Scolopax rusticola</i> Linnaeus, 1758
<i>Rhynonirmus scolopacis</i> (Denny, 1842)	<i>Gallinago gallinago</i> (Linnaeus, 1758)
<i>Saemundssonina cephalus</i> (Denny, 1842)	<i>Stercorarius parasiticus</i> (Linnaeus, 1758)
<i>Saemundssonina conica naumanni</i> (Giebel, 1874)	<i>Pluvialis squatarola</i> (Linnaeus, 1758)
<i>Saemundssonina haematopi</i> (Linnaeus, 1758)	<i>Haematopus ostralegus</i> Linnaeus, 1758
<i>Saemundssonina integer</i> (Nitzsch, 1866)	<i>Grus grus</i> (Linnaeus, 1758)
<i>Saemundssonina kosswigi</i> Timmermann, 1962	<i>Puffinus yelkouan</i> (Acerbi, 1827)
<i>Saemundssonina lari</i> (O. Fabricius, 1780)	<i>Chroicocephalus genei</i> (Brème, 1839) <i>Chroicocephalus ridibundus</i> (Linnaeus, 1758) <i>Hydrocoloeus minutus</i> (Pallas, 1776) <i>Larus cachinnans</i> Pallas, 1817 <i>Larus canus</i> (Linnaeus, 1758) <i>Larus fuscus</i> Linnaeus, 1758 <i>Rissa tridactyla</i> (Linnaeus, 1758)
<i>Saemundssonina laticaudata</i> (Rudow, 1896)	<i>Hydroprogne caspia</i> (Pallas, 1770) <i>Thalasseus sandvicensis</i> (Latham, 1787)
<i>Saemundssonina lobaticeps</i> (Giebel, 1874)	<i>Chlidonias hybrida</i> (Pallas, 1769) <i>Chlidonias niger</i> (Linnaeus, 1758)
<i>Saemundssonina platygaster</i> (Denny, 1842)	<i>Charadrius alexandrinus</i> Linnaeus, 1758 <i>Pluvialis apricaria</i> (Linnaeus, 1758) <i>Vanellus vanellus</i> (Linnaeus, 1758) <i>Calidris temminckii</i> (Leisler, 1812) <i>Tringa erythropus</i> (Pallas, 1764)
<i>Saemundssonina platygaster jadvigae</i> Timmermann, 1969	<i>Calidris alba</i> (Pallas, 1764)
<i>Saemundssonina platygaster mollis</i> (Nitzsch, 1874)	<i>Tringa totanus</i> (Linnaeus, 1758)
<i>Saemundssonina platygaster temporalis</i> (Giebel, 1874)	<i>Vanellus vanellus</i> (Linnaeus, 1758)
<i>Saemundssonina scolopacisphaeopodis</i> (Schränk, 1803)	<i>Charadrius morinellus</i> Linnaeus, 1758 <i>Numenius arquata</i> (Linnaeus, 1758) <i>Philomachus pugnax</i> (Linnaeus, 1758)

LOUSE SPECIES	HOST SPECIES
<i>Saemundssonina sterna</i> (Linnaeus, 1758)	<i>Gelochelidon nilotica</i> C.L. Brehm, 1830 <i>Sterna hirundo</i> Linnaeus, 1758
<i>Saemundssonina thompsoni</i> Timmermann, 1951	<i>Limosa limosa</i> (Linnaeus, 1758)
<i>Saemundssonina tringae</i> (O. Fabricius, 1870)	<i>Calidris alpina</i> (Linnaeus, 1758)
<i>Strigiphilus barbatus</i> (Osborn, 1902)	<i>Asio otus</i> (Linnaeus, 1758)
<i>Strigiphilus cursitans</i> (Nitzsch, 1861)	<i>Athene noctua</i> (Scopoli, 1769)
<i>Strigiphilus cursor</i> (Burmeister, 1838)	<i>Asio flammeus</i> (Pontoppidan, 1763)
<i>Strigiphilus laticephalus</i> (Uchida, 1949)	<i>Strix aluco</i> (Linnaeus, 1758)
<i>Strigiphilus portigi</i> Eichler, 1952	<i>Strix aluco</i> (Linnaeus, 1758)
<i>Strigiphilus rostratus</i> (Burmeister, 1838)	<i>Tyto alba</i> (Scopoli, 1769)
<i>Strigiphilus strigis</i> (Pontoppidan, 1763)	<i>Bubo bubo</i> (Linnaeus, 1758)
<i>Sturnidoecus pastoris</i> (Denny, 1842)	<i>Pastor roseus</i> (Linnaeus, 1758)
<i>Sturnidoecus refractariolus</i> (Zlotorzycska, 1964)	<i>Passer domesticus</i> (Linnaeus, 1758)
<i>Sturnidoecus ruficeps</i> (Nitzsch, 1866)	<i>Passer montanus</i> (Linnaeus, 1758)
<i>Sturnidoecus sturni</i> (Schrank, 1776)	<i>Sturnus vulgaris</i> (Linnaeus, 1758)
<i>Upupicola upupae</i> (Schrank, 1803)	<i>Upupa epops</i> Linnaeus, 1758

KIVONAT—Korábban már publikált és új adatok alapján mutatjuk be a Duna-delta madarairól ismert tolltetvek listáját. A régióban rendszeresen előforduló 233 madárfaj közül 176 fajról 393 gazdaparazita kapcsolatot sikerült kimutatni, 20 madárrend 50 családjának tagjain. Összesen 270 tolltetűfaj és -alfaj került elő; 79 faj az Amblycera alrendből (három család: Laemobothriidae, Menoponidae és Ricinidae) és 191 az Ischnocera alrendből (egy család: Philopteridae).

References

- Adam, C. (2007): Data on the chewing louse fauna (Phthiraptera: Amblycera, Ischnocera) from some Romanian autochthonous and exotic birds. *Travaux du Muséum National d'Histoire Naturelle "Grigore Antipa"* **50**, p. 145–210.
- Adam, C. & Sándor, A. D. (2004): New data on the chewing louse fauna (Phthiraptera: Amblycera, Ischnocera) from Romania. Part I. *Travaux du Muséum National d'Histoire Naturelle "Grigore Antipa"* **46**, p. 75–82.
- Adam, C., Chişamera, G., Daróczy, S. J., Sándor, A. D. & Gogu-Bogdan, M. (2009): Data on the chewing louse fauna (Phthiraptera: Amblycera, Ischnocera) from some wild and domestic birds of Romania. *Travaux du Muséum National d'Histoire Naturelle "Grigore Antipa"* **52**, p. 177–232.
- Bechet, I. (1959): [Contributions to the the knowledge of chewing lice from the Romanian R.P. (II)]. *Studii şi cercetări de biologie. Academia R.P.R., Filiala Cluj* **10**, p. 129–136 [in Romanian].
- Bechet, I. (1961): [Mallophaga from People's Republic of Romania]. *Studii şi cercetări de biologie, Academia Republicii Populare Romîne, Filiala Cluj* **12**, p. 91–102 [in Romanian].
- Bechet, I. (1962): [Studies on the chewing lice of the People's Republic of Romania]. Unpublished PhD Thesis. University of Bucureşti. 492 p [in Romanian].
- Bechet, I. (1964): [Contributions to the the knowledge of chewing lice from the Romanian R.P. (IV)]. *Studia Universitatis "Babeş-Bolyai" (Series Biologia)* **1**, p. 91–97 [in Romanian].
- Bechet, I. (1968a): [The *Aquanirmus* (Insecta, Mallophaga) species from the fauna of R.P.R.] *Studia Universitatis "Babeş-Bolyai" (Series Biologia)* **2**, p. 97–100 [in Romanian].
- Bechet, I. (1968b): [The *Lunaceps* (Insecta, Mallophaga) species from the fauna of Romania.] *Comunicări de Zoologie, Societatea de Ştiinţe Biologice* **6**, p. 125–129 [in Romanian].
- Carrillo, C. M., Valera, F., Barbosa, A. & Moreno, E. (2007): Thriving in an arid environment: High

- prevalence of avian lice in low humidity conditions. *Ecoscience* **14**, p. 241–249.
- Clements, J. F., Schulenberg, T. S., Iliff, M. J., Roberson, D., Fredericks, T. A., Sullivan, B. L. & Wood, C. L. (2016): The eBird/Clements checklist of birds of the world: v2016 (accessed at: <http://www.birds.cornell.edu/clementschecklist/download/> on 10.10.2016).
- Constantineanu, M., Borcea, P., Suci, I., Andriescu, I. & Piscă, C. (1961): [Contribution to the study of chewing lice parasites of domestic and wild mammals from R. P. R.] *Analele Științifice ale Universității "Alexandru Ioan Cuza" din Iași (Științele Naturii)* **7**, p. 81–94 [in Romanian].
- Constantineanu, M. & Piscă, C. (1959): [New and rare chewing lice (*Mallophaga* Nitzsch) species for the Romanian fauna]. *Studii și cercetări științifice de Biologie și Științe Agricole, Academia R.P.R., Filiala Iași* **10**, p. 243–250 [in Romanian].
- D'Amico, V. L. & Barbosa, A. (2011): Flocking behaviour does not favour high chewing lice load in shorebirds. *Ardeola* **58**, p. 49–56.
- Felső, B. & Rózsa, L. (2006): Reduced taxonomic richness of lice (Insecta: Phthiraptera) in diving birds. *Journal of Parasitology* **92**, p. 867–869.
- Gustafsson, D. R. & Olsson, U. (2012): Flyway homogenisation or differentiation? Insights from the phylogeny of the sandpiper (Charadriiformes: Scolopacidae: Calidrinae) wing louse genus *Lunaceps* (Phthiraptera: Ischnocera). *International Journal for Parasitology* **42**, p. 93–102.
- Jordan-Georgescu, M. (1941): [Contribution to the study of chewing lice from Romania]. *Analele Academiei Române, Memoriile Secțiunii Științifice* **16**, p. 841–968 [in Romanian].
- Kéler, S. von (1960): Über die dualistische differenzierung der Gattung *Anatoecus* Cummings (Mallophaga). *Zeitschrift für Parasitenkunde* **20**, p. 207–316.
- Kiss, J. B. (1971): [The Manx shearwater – *Puffinus puffinus yelkouan* (Acerbi) on the territory of Romania.] *Peuce: Studii Și Comunicări de Șt. Naturii* **1**, p. 475–478 [in Romanian].
- Marinov, M. (2006): Emerging Diseases in a changing European Environment (EDEN) – general presentation and DDNI team's contribution. *Analele Științifice ale Institutului Delta Dunării* **12**, p. 75–82.
- Negru, Ș. (1958): [New chewing lice (*Mallophaga* Nitzsch) for the fauna of R.P.R.]. *Studii și Cercetări de Biologie, Biologie animal* **10**, p. 225–248 [in Romanian].
- Negru, Ș. (1959): [New chewing lice (*Mallophaga* Nitzsch) for the fauna of R.P.R.]. *Studii și Cercetări de Biologie, Biologie animala* **11**, p. 135–147 [in Romanian].
- Negru, Ș. (1961): [New chewing lice (*Mallophaga* Nitzsch) for the fauna of R.P.R. (V.)]. *Studii și Cercetări de Biologie, Biologie Animală* **13**, p. 313–324 [in Romanian].
- Negru, Ș. (1963): [New chewing lice (*Mallophaga* Nitzsch) for the fauna of R.P.R. (VI.)]. *Comunicările Academiei Republicii Populare Romane* **13**, p. 39–44 [in Romanian].
- Papp, T. & Sándor, A. D. (eds) (2007): Arie de Importanță Avifaunistică din România / Important Bird Areas in Romania. Ed. Societatea Ornitologică Română & Asociația pentru Protecția Păsărilor și a Naturii „Grupul Milvus”, Târgu Mureș, 252 p.
- Platteeuw, M., Kiss, J. B., Sadoul, N. & Zhmud, M. Y. (2004): Colonial waterbirds and their habitat use in the Danube Delta. *RIZA Report*. 168 p.
- Price, R. D., Helleenthal, R. A., Palma R. L., Johnson, K. P. & Clayton, D. H. (eds) (2003): The chewing lice, world checklist and biological overview. Illinois Natural History Survey Special Publication 24, Champaign, 501 p.
- Rădulescu, I. (1968): [Parasitological research on several wetland bird species from fish hatching ponds.] *Buletinul Institutului de Cercetări Piscicole* **27**, p. 75–84 [in Romanian].
- Rékási, J. & Kiss, J. B. (1977): Beiträge zur Kenntnis der Federlinge (Mallophaga) der Vögel Nord-Dobrudschas (Rumänien). *Parasitologia Hungarica* **10**, p. 97–116.
- Rékási, J. & Kiss, J. B. (1980): Weitere Beiträge zur Kenntnis der Federlinge (Mallophaga) von Vögeln der Nord-Dobrudscha. *Parasitologica Hungarica* **13**, p. 67–93.
- Rékási, J. & Kiss, J. B. (1983): Beiträge zur Kenntnis der Federlinge (Mallophaga) einiger seltener

- Vogelarten. *Miscellanea Zoologica Hungarica* **2**, p. 45–46.
- Rékási, J. & Kiss, J. B. (1984): Weitere Angaben zur Kenntnis der Federlinge (Mallophaga) der Vögel Nord-Dobrudschas, Rumänien. II. *Parasitologica Hungarica* **17**, p. 97–117.
- Rékási, J. & Kiss, J. B. (1994): [Data regarding the chewing lice (Mallophaga) from the birds of the Danube Delta]. *Analele Științifice ale Institutului Delta Dunării* **3**, p. 101–110 [in Romanian].
- Rékási, J. & Kiss, J. B. (1997): Data on the bird lice (Mallophaga) of some bird species from the Danube Delta (North Dobrogea, Romania). *Travaux du Muséum National d'Histoire Naturelle "Grigore Antipa"* **39**, p. 59–82.
- Rékási, J. & Kiss, J. B. (1999): New data on birdlice (Mallophaga) of rare birds from northern Dobrogea (Romania). *Analele Științifice ale Institutului Național de Cercetare-Dezvoltare „Delta Dunării”* p. 44–46.
- Rékási, J. & Kiss, J. B. (2005): New data on Mallophaga of the pelicans nesting at the Hrecisca colony in Romania. *Aquila* **112**, p. 228.
- Rékási, J. & Kiss, J. B. (2006a): New data on the lice (Phthiraptera) of some birds from North-Dobrogea (Romania). *Acrocephalus* **130–131**, p. 139–146.
- Rékási, J. & Kiss, J. B. (2006b): New data regarding the bird lice (Phthiraptera) living on diurnal birds of prey (Accipitriformes) in Danube Delta, Romania. *Analele Științifice ale Institutului Național de Cercetare-Dezvoltare „Delta Dunării”* **11**, p. 89–91.
- Rékási, J., Kiss, J. B., Rózsa, L. & Reiczigel, J. (1998): Tolltetvek (Mallophaga) ökológiai vizsgálatá, különös tekintettel a gazda telepes életmódjának hatására. *Ornis Hungarica* **8**, p. 205–209.
- Rékási, J., Kiss, J. B. & Török, Z. (1997): Data on the bird lice (Mallophaga) parasiting the bird species of the Danube Delta (Romania). *Analele Științifice ale Institutului Național de Cercetare-Dezvoltare „Delta Dunării”* **4**, p. 123–129.
- Rékási, J., Rózsa, L. & Kiss, J. B. (1997): Patterns in the distribution of avian lice (Phthiraptera: Amblycera, Ischnocera). *Journal of Avian Biology* **28**, p. 150–156.
- Rózsa, L. (1997): Patterns in the abundance of avian lice (Phthiraptera: Amblycera, Ischnocera). *Journal of Avian Biology* **28**, p. 249–254.
- Sándor, A. D., Rékási, J., Kiss, J. B., Gherman, C. M., D'Amico, G. & Mihalca, A. D. (submitted): Differential prevalence and diversity of lice (Phthiraptera: Amblycera, Ischnocera) in migrant birds according to migratory distance and season.
- Vas, Z., Csorba, G. & Rózsa, L. (2012): Evolutionary co-variation of host and parasite diversity—the first test of Eichler's rule using parasitic lice (Insecta: Phthiraptera). *Parasitology Research* **111**, p. 393–401.
- Vasiliu, G. D. (1946): Note sur quelques Mallophages parasites de la Roumanie. *Notationes Biologicae* **4**, p. 186–188.
- Voelker, G., Marks, B. D., Kahindo, C., A'genonga, U., Bapeamoni, F., Duffie, L. E. & Light, J. E. (2013): River barriers and cryptic biodiversity in an evolutionary museum. *Ecology and Evolution* **3**, p. 536–545.