

Evidence of Sympatry of Clade A and Clade B Head Lice in a Pre-Columbian Chilean Mummy from Camarones

Amina Boutellis¹, Rezak Drali¹, Mario A. Rivera², Kosta Y. Mumcuoglu³, Didier Raoult^{1*}

1 Unité de Recherche sur les Maladies Infectieuses et Tropicales Emergentes: URMITE, Aix Marseille Université, UMR CNRS 7278, IRD 198, INSERM 1095. Faculté de Médecine, 27 Bd Jean Moulin, Marseille, France, **2** Programa Identidad del Fin del Mundo. Universidad de Magallanes-Mineduc, Punta Arenas, Chile, **3** Department of Microbiology and Molecular Genetics, The Kuvim Center for the Study of Infectious and Tropical Diseases, Hadassah Medical School, The Hebrew University, Jerusalem, Israel

Abstract

Three different lineages of head lice are known to parasitize humans. Clade A, which is currently worldwide in distribution, was previously demonstrated to be present in the Americas before the time of Columbus. The two other types of head lice are geographically restricted to America and Australia for clade B and to Africa and Asia for clade C. In this study, we tested two operculated nits from a 4,000-year-old Chilean mummy of Camarones for the presence of the partial *Cytb* mitochondrial gene (270 bp). Our finding shows that clade B head lice were present in America before the arrival of the European colonists.

Citation: Boutellis A, Drali R, Rivera MA, Mumcuoglu KY, Raoult D (2013) Evidence of Sympatry of Clade A and Clade B Head Lice in a Pre-Columbian Chilean Mummy from Camarones. PLoS ONE 8(10): e76818. doi:10.1371/journal.pone.0076818

Editor: Michael Knapp, Bangor University, United Kingdom

Received: April 22, 2013; **Accepted:** August 29, 2013; **Published:** October 30, 2013

Copyright: © 2013 Boutellis et al. This is an open-access article distributed under the terms of the Creative Commons Attribution License, which permits unrestricted use, distribution, and reproduction in any medium, provided the original author and source are credited.

Funding: These authors have no support or funding to report.

Competing Interests: The authors have declared that no competing interests exist.

* E-mail: didier.raoult@gmail.com

Introduction

Pediculus humanus capitis is an ancient human parasite most likely associated with humans since our pre-hominid ancestor and dispersed throughout the world by early human migrants [1]. Louse infestation in ancient human populations has been recorded in different geographic regions of the world [2] and even affected wealthy social classes, such as the 15th-century King of Naples, Ferdinand II of Aragon [3]. The oldest head louse nit was found on a hair from an archaeological site in northeastern Brazil and was dated to 8,000 B.C. [4]. The oldest such finding in Asia is 9,000 years old, obtained from a hair sample from an individual who lived in the Nahal Hemar cave in Israel [5]. Head lice have also been found at archaeological sites in the southwestern USA, the Aleutian Islands, Peru, Greenland and Mexico and on mummies that were Incan sacrifices [4]. Recently, another discovery of lice was reported for a Maitas Chiribaya mummy from Arica, in northern Chile, dating to 670–990 A.D. (calibrated) [6]. The evidence for the presence of ectoparasites on ancient Americans indicates that head lice most likely arrived with the first human colonists who entered the Americas [7]. However, by amplifying mitochondrial DNA (mtDNA) of part of two genes (*Cytb* and *CoxI*) belonging to 10,000-year-old lice collected from Peruvian mummies, Raoult and colleagues demonstrated that the worldwide clade A louse was in the Americas before the time of Columbus [8]. Two other clades of head lice have been reported and have a specific geographical distribution: clade C is specifically restricted to head lice in Ethiopia, Nepal and Senegal [9], whereas the clade B head lice are found in North and Central America, Australia and certain European countries [7]. However, the origin of clade B head lice remains unknown because no lice with this phylotype have been reported in Asia or in any region suspected to

have contributed to populating the Americas. In the current study, two operculated nits from a mummy found in Camarones, Chile, were tested to identify the mitochondrial phylotypes of the lice.

Materials and Methods

Hair samples from seven mummies from Camarones 15-D, Chile, carbon-dated to ca. 4,000 B.C., were examined for the presence of head lice (Figure 1), and in six hair samples, the nits of head lice were found. No body louse was found on these mummies. The material (nits fixed on hair) of one mummy was stored in 70% ethyl alcohol for the last 10 years and was sent to our laboratory in Marseille in September 2012.

A first screening of the quality of the nits was performed using our ZEISS zoom microscope with a fixed camera (ZEISS AXIO ZOOM.V16. France), and then two operculated nits were selected for our study (Figure 2). The two nits were rinsed twice in sterile water then crushed with a scalpel. The total genomic DNA was extracted and eluted in a 50 µl volume with a QIAamp Tissue Kit (Qiagen, Courtaboeuf, France) with an EZ1 apparatus, as described by the manufacturer. The extracted genomic DNA concentrations were 1.8 ng/µl and 1.3 ng/µl for the two nits, and the DNA samples were stored at –20°C under sterile conditions to avoid cross-contamination until further processing. The DNA of the two nits was amplified using a suicide nested polymerase chain reaction (PCR) protocol (re-amplification without positive control) with a partial *Cytb* gene (270 bp) primers, as previously described [11]. The same primers were used for both amplifications. PCR reactions were prepared on ice and contained 3 µl of the DNA template, 4 µl of 5X HF Phusion Buffer, 250 µM of each nucleotide, 0.5 µM of each primer, 0.2 µl of Phusion DNA Polymerase (Thermo Scientific, Lithuania) and water (DNase and



Figure 1. Picture of the Mummy. Mummy 23 from Camarones 15-D, Northern Chile © Mario A Rivera.
doi:10.1371/journal.pone.0076818.g001

RNase-Free) to a final reaction mixture volume of 20 µl. The PCRs were performed in a PTC-200 automated thermal cycler (MJ research, Waltham, MA, USA). The cycling conditions were 98°C for 30 sec; 40 cycles of 5 sec at 98°C, 30 sec at 56°C, 15 sec at 72°C; and a final extension time of 5 min at 72°C. All of the experiments were performed in a location free of louse DNA, under a hood with air capture and with sterilized instruments that were used only once. The negative controls remained negative. The success of the PCR amplification was then verified by migration of the PCR product on a 2% agarose gel. The NucleoFast 96 PCR Plates (Macherey-Nagel EURL, France) and BigDye Terminator version 1.1 cycle sequencing-ready reaction mix (Applied Biosystems, Foster City, CA) were then used to purify the PCR products to be sequenced directly in both directions with the same primers used in the PCR amplification. The ABI 3100 automated sequencer (Applied Biosystems) resolved the sequenced products. The program Chromas Pro software (Technelysium PTY, Australia) was used to analyze, assemble and correct the sequences.

In addition to our newly obtained data, 18 samples belonging to the worldwide clade A [8], 19 samples belonging to clade B from USA, UK [11] and Honduras [7] and 28 samples belonging to clade C from Senegal [9] and Ethiopia [12] were used.

The Phylogeny Reconstruction was performed from the DNA sequences using the Maximum Likelihood (ML) with 100 Bootstrap Replications within the MEGA 5 software with complete deletion, Tamura-Nei model (nucleotide) of substitution model was used automatically [13].

Ethics statement

Mummies from Camarones were excavated in 1990 by a team of investigators under the direction of Mario A. Rivera, they have permit from Consejos Monumentos Nacionales, authorization

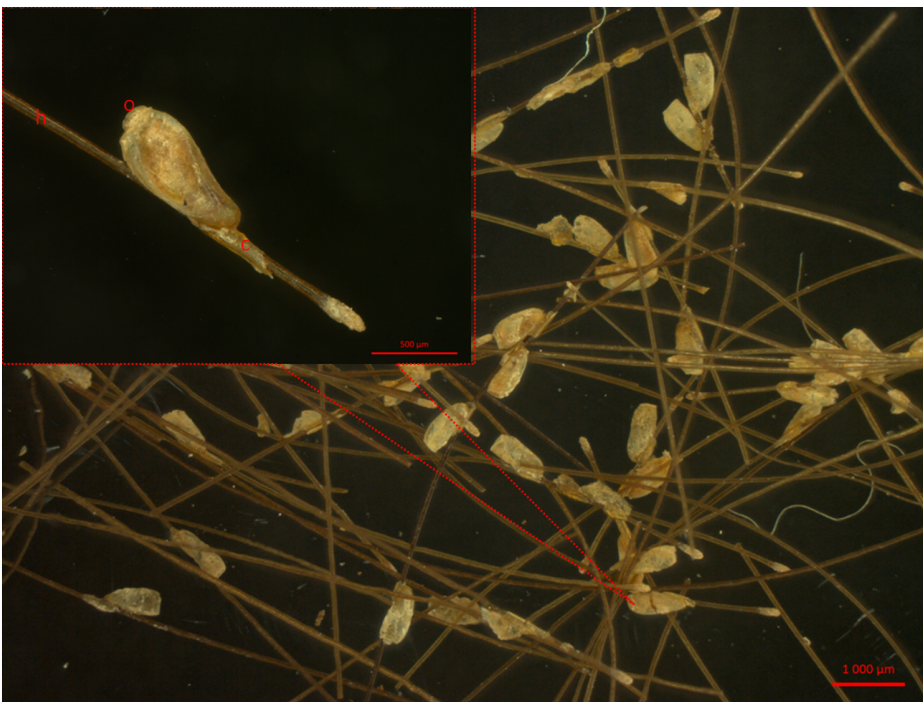


Figure 2. Picture of the Pre Columbian nit. A pre-Columbian nit isolated from a Chilean mummy (No. 1) (h: hair; o: operculum; c: cementum) (picture taken with a ZEISS AXIO ZOOM.V16).
doi:10.1371/journal.pone.0076818.g002

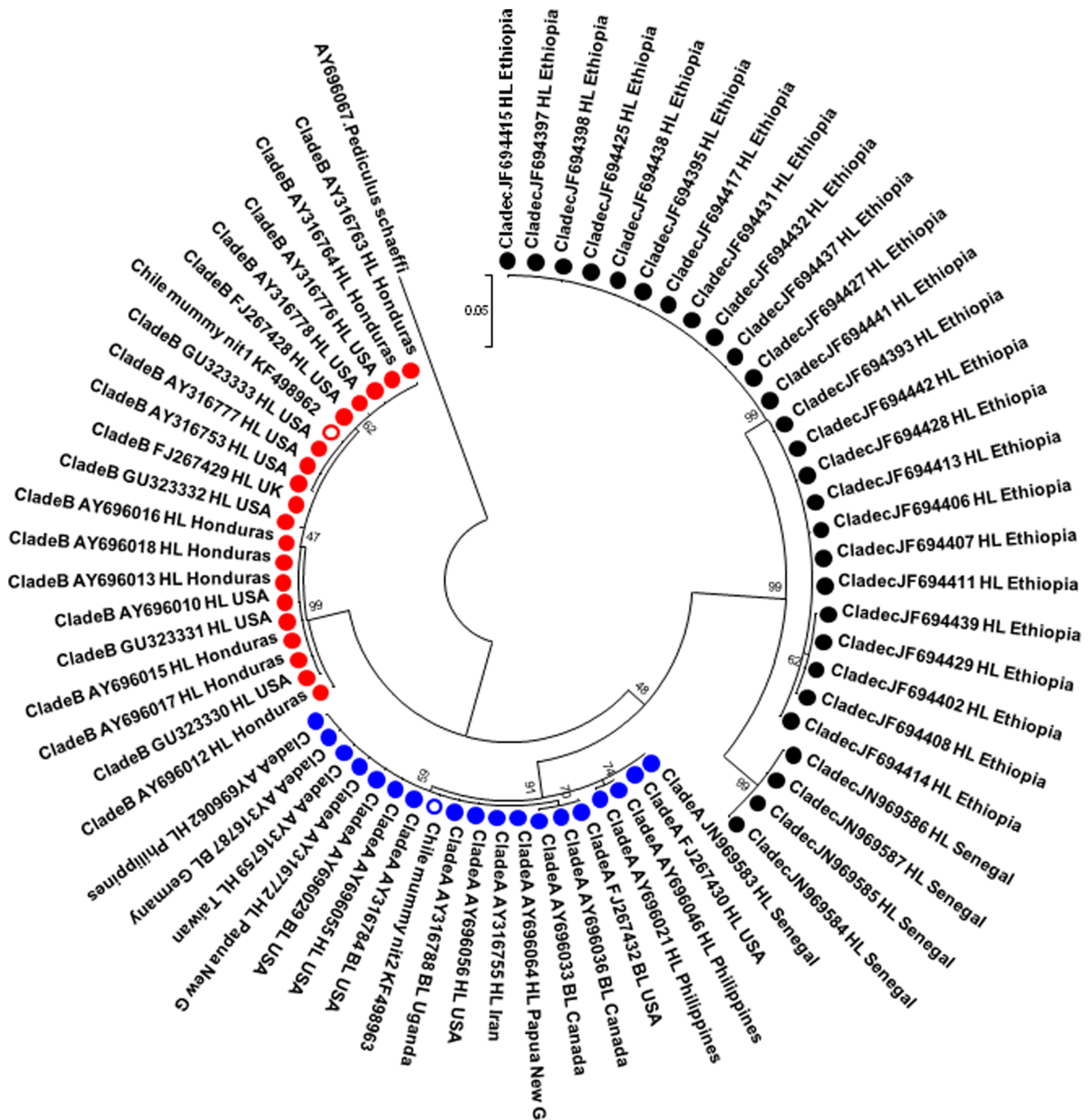


Figure 3. *Cytb* phylogenetic analysis. The phylogenetic tree based on ML method of the two pre-Columbian Chilean nits based on the partial *Cytb* gene (270 bp). **HL: head louse, BL: body louse.** The numbers on the branches are bootstrap values. doi:10.1371/journal.pone.0076818.g003

number 355, November 12th, 1987. Samples were donated by Museo Arqueologia San Miguel Azapa, Universidad de Tarapaca, Arica, Chile and permission was obtained from the said Museum to access the collections [10].

Results

The DNA of the two nits (848 µm and 912 µm long, respectively) was amplified and sequenced for the *Cytb* gene of 270 bp. After assembling the sequences and analyzing the

phylogenetic tree, it was found that one nit belonged to the worldwide clade A (Genbank accession n°KF498963), whereas the second nit belonged to the clade B (Genbank accession n°KF498962) (figure 3). One base distinguished chilean mummy clade A head lice from other sequences found in GenBank: position 7 (G in mummy nit lice versus a gap in others) (Figure 4). There is no difference between the Chilean mummy clade B nit and other sequences present in GenBank (Figure 4).

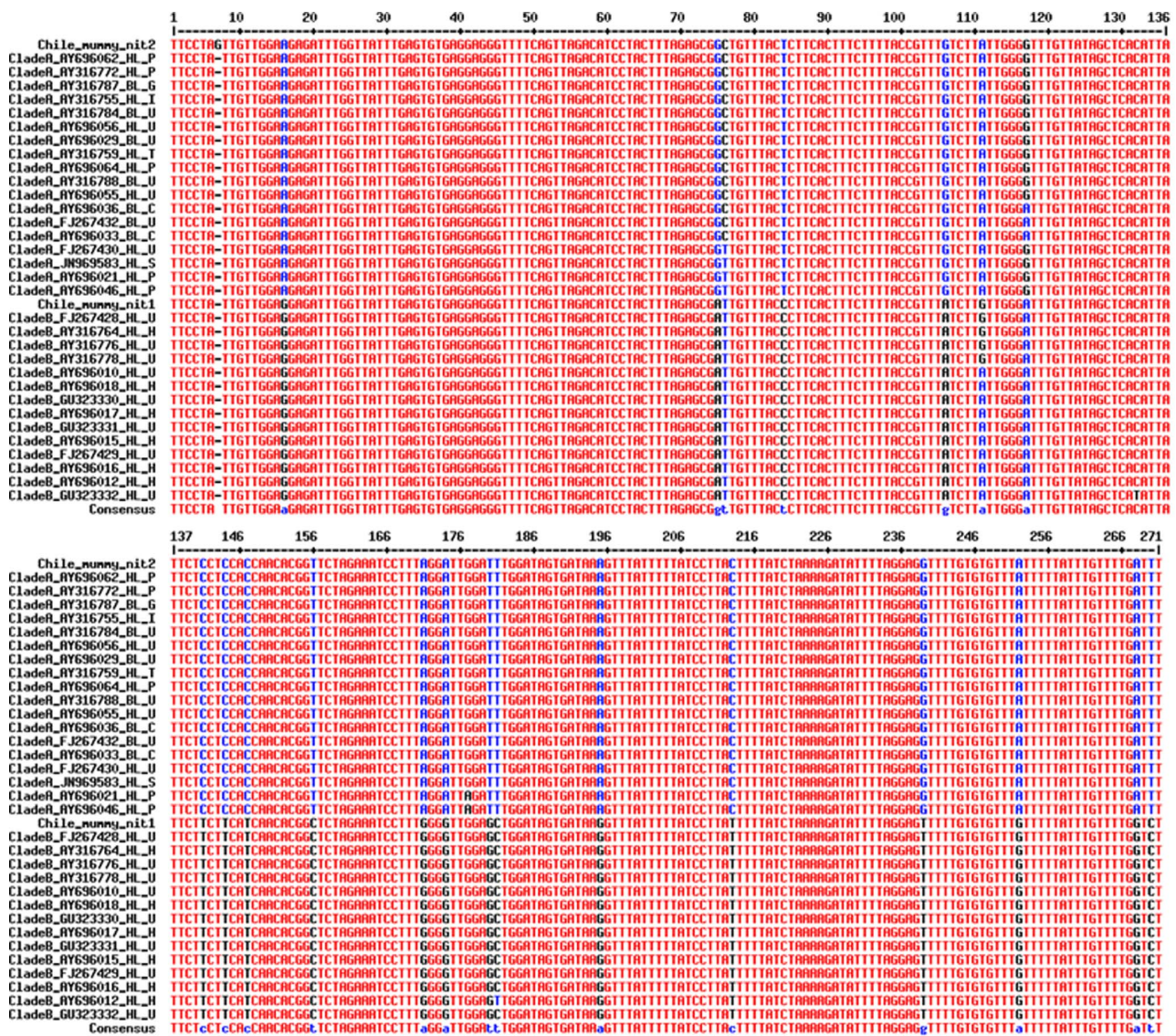


Figure 4. Sequences alignment. Alignment of the clade A and clade B sequences (Chilean mummy’s nit and other sequences present in GenBank) P: Philippines, G: Germany, I: Iran, U: United State of America, T: Taiwan, C: Canada, S: Senegal, Pa: Papua New Guinea, H: Honduras. doi:10.1371/journal.pone.0076818.g004

Discussion

We report the first identification of both the clade A and the clade B genotypes existing in sympatry in two nits isolated from human remains from pre-Columbian Chile. Lice with clade A and clade B mtDNA are not uncommon and were reported to be present on a single human head in both the USA and Honduras on several occasions [8]. Clade B was first identified in America and the United Kingdom and was later found in other European countries and Australia [7]. Until now, the origin of clade B was unknown, but according to the clade’s current distribution, it was speculated that this louse phylogroup was imported into Europe by Europeans returning from America [1]. Currently, the most likely theory is that the clade A louse issued from Africa and was distributed worldwide, given the clade’s three different chromosomal signatures: A1, which is found worldwide; A2, which has

been reported only in Africa; and A3, which is specific to American lice [14]. Clade B may have developed in North and Central America before Columbus and is now spreading throughout the world. This clade’s origin predates modern *Homo sapiens* by an order of magnitude (ca. 1.18 million years) [1]. In contrast, Clade C is mostly confined to Africa and Asia.

The present work confirms that the origin of clade B was America before the arrival of Columbus, but it will be interesting to test other mummies from Asia, which is reputed to have peopled the Americas.

Author Contributions

Conceived and designed the experiments: DR KM. Performed the experiments: AB RD. Analyzed the data: AB RD DR. Wrote the paper: AB RD KM MR DR. Collected samples: MR KM.

References

1. Reed DL, Smith VS, Hammond SL, Rogers AR, Clayton DH (2004) Genetic analysis of lice supports direct contact between modern and archaic humans. *PLoS Biol* 2: e340. 10.1371/journal.pbio.0020340 [doi].
2. Rick FM, Rocha GC, Dittmar K, Coimbra CE, Reinhard K, et al. (2002) Crab louse infestation in pre-Columbian America. *J Parasitol* 88: 1266–1267. 10.1645/0022-3395(2002)088[1266:CLIIPC]2.0.CO;2 [doi].
3. Fornaciari G, Giuffra V, Marinuzzi S, Picchi MS, Masetti M (2009) 'Royal' pediculosis in Renaissance Italy: lice in the mummy of the King of Naples Ferdinand II of Aragon (1467–1496). *Mem Inst Oswaldo Cruz* 104: 671–672. S0074-02762009000400026 [pii].
4. Araujo A, Ferreira LF, Guidon N, Maues Da Serra FN, Reinhard KJ, et al. (2000) Ten thousand years of head lice infection. *Parasitol Today* 16: 269. S0169-4758(00)01694-X [pii].
5. Mumcuoglu K (2008) Pediculus and Pthirus. In *Paleomicrobiology – Past Human Infections*. Raoult, D. & M. Drancourt (eds). Springer, Berlin, 215–222.
6. Arriaza B, Orellana NC, Barbosa HS, Menna-Barreto RF, Araujo A, et al. (2012) Severe head lice infestation in an Andean mummy of Arica, Chile. *J Parasitol* 98: 433–436. 10.1645/GE-2903.1 [doi].
7. Light JE, Allen JM, Long LM, Carter TE, Barrow L, et al. (2008) Geographic distributions and origins of human head lice (*Pediculus humanus capitis*) based on mitochondrial data. *J Parasitol* 94: 1275–1281. GE-1618 [pii];10.1645/GE-1618.1 [doi].
8. Raoult D, Reed DL, Dittmar K, Kirchman JJ, Rolain JM, et al. (2008) Molecular identification of lice from pre-Columbian mummies. *J Infect Dis* 197: 535–543. 10.1086/526520 [doi].
9. Boutellis A, Veracx A, Angelakis E, Diatta G, Mediannikov O, et al. (2012) *Bartonella quintana* in head lice from Senegal. *Vector Borne Zoonotic Dis* 12: 564–567. 10.1089/vbz.2011.0845 [doi].
10. Rivera MA, Mumcuoglu K, Mathney RT, Matheny DG (2008) Head lice eggs, *Anthropophthirus capitis*, from mummies of the Chinchorro tradition, Camarones 15-D, Northern Chile. *Chungara, Revista de Antropologia Chilena* 40: 31–39.
11. Li W, Ortiz G, Fournier PE, Gimenez G, Reed DL, et al. (2010) Genotyping of human lice suggests multiple emergences of body lice from local head louse populations. *PLoS Negl Trop Dis* 4: e641. 10.1371/journal.pntd.0000641 [doi].
12. Angelakis E, Diatta G, Abdissa A, Trape JF, Mediannikov O, et al. (2011). Altitude-dependent *Bartonella quintana* genotype C in head lice, Ethiopia. *Emerg Infect Dis*; 17: 2357–2359. 10.3201/eid1712.110453 [doi].
13. Tamura K, Peterson D, Peterson N, Stecher G, Nei M, et al. (2011) MEGA5. Molecular evolutionary genetics analysis using maximum likelihood, evolutionary distance, and maximum parsimony methods. *Mol Biol Evol*; 28: 2731–39. msr121 [pii];10.1093/molbev/msr121 [doi].
14. Boutellis A, Veracx A, Jonatas A, Raoult D (2013) Amazonian head lice-specific genotypes are putatively pre-Columbian. *Am J Trop Med Hyg* 88(6):1180–4. 10.4269/ajtmh.12-0766 [doi].