

Corrigendum

Corrigendum to ‘Fragmented mitochondrial genomes evolved in opposite directions between closely related macaque louse *Pedicinus obtusus* and colobus louse *Pedicinus badii*’

Yi-Tian Fu^a, Yalun Dong^b, Wei Wang^b, Yu Nie^a, Guo-Hua Liu^{a,**}, Renfu Shao^{b,*}

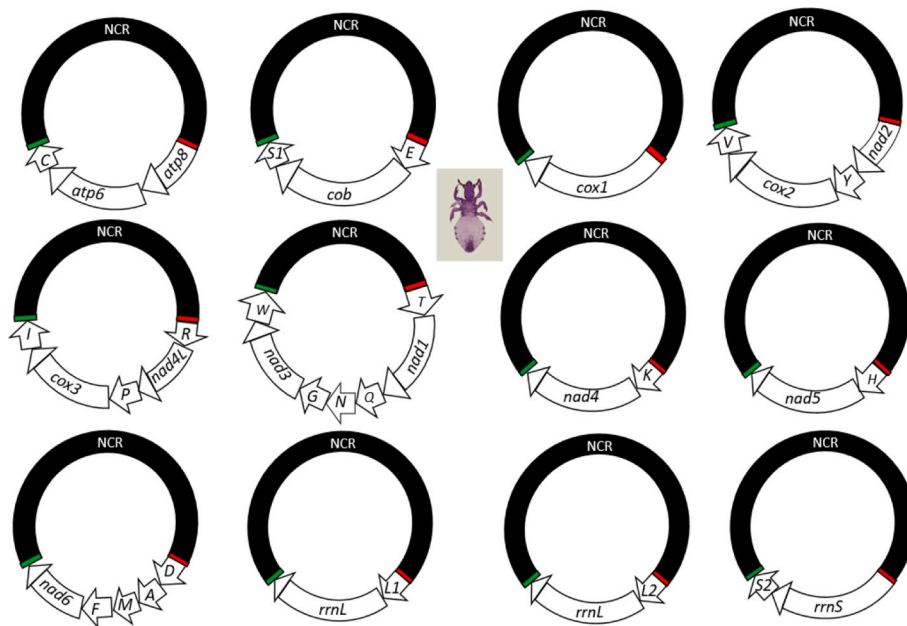
^a Hunan Provincial Key Laboratory of Protein Engineering in Animal Vaccines, College of Veterinary Medicine, Hunan Agricultural University, Changsha 410128, PR China

^b GeneCology Research Centre, School of Science and Engineering, University of the Sunshine Coast, Sippy Downs, Queensland 4556, Australia



The authors regret:

This article contains an error in Fig. 3. The orientation of *nad1* should



be clockwise. See a corrected Fig. 3 below. As a consequence, *nad1* should be clockwise in Fig. 7 and Fig. 8B as well.

The authors would like to apologise for any inconvenience caused.

DOI of original article: <https://doi.org/10.1016/j.ygeno.2020.09.005>.

* Corresponding author at: School of Science and Engineering, University of the Sunshine Coast, Maroochydore 4556, Australia.

** Corresponding author.

E-mail addresses: liuguohua5202008@163.com (G.-H. Liu), rshao@usc.edu.au (R. Shao).

<https://doi.org/10.1016/j.ygeno.2021.01.015>

Available online 4 February 2021

0888-7543/© 2021 Elsevier Inc. All rights reserved.