

Ardeicola ardea (Linn.)  
Pl. 15

Ardeicola ardea (Linn.), 1758 (Pediculus). Syst. Nat. ed. X:613.  
leucopygus (Burmeister), 1838 (Lipeurus). Handb. Ent., 2:434  
Modestus (Giebel), 1874 (Lipeurus). Insecta Epizoa:233.  
obtusus (Stephens), 1829 (Lipeurus). Cat. Brit. Ins., 2:332.  
Phoenicopteri (Macalister), 1871 (Lipeurus). Quart. J. micro.  
sci. (n.s.) 11:163.

Type host: Ardea cinerea L.  
Non indigenous specimen collected at Cornell University from  
Stercorarius parasiticus (L) but probable host error.

Ardeicola A  
Pl. 15

Specimens collected from the Black-crowned Night Heron, Nycticorax  
nycticorax hohetti (L).

Head: clypeus deeply cleft posteriorly; crenulation, apparently both  
both dorsal and ventral; ventral carinae well sclerotized;  
temporal marginal carina colored; antenna of male with pro-  
duced third antennal segment.

Thorax; normal to genus

Abdomen: paratergites black anteriorly, narrow, overlapping;  
tergites incompletely sclerotized. Male parameres cimitas  
shaped; female segment VII conical; vulva without setae.

Length: male 2.45 mm., female 3.1 mm.

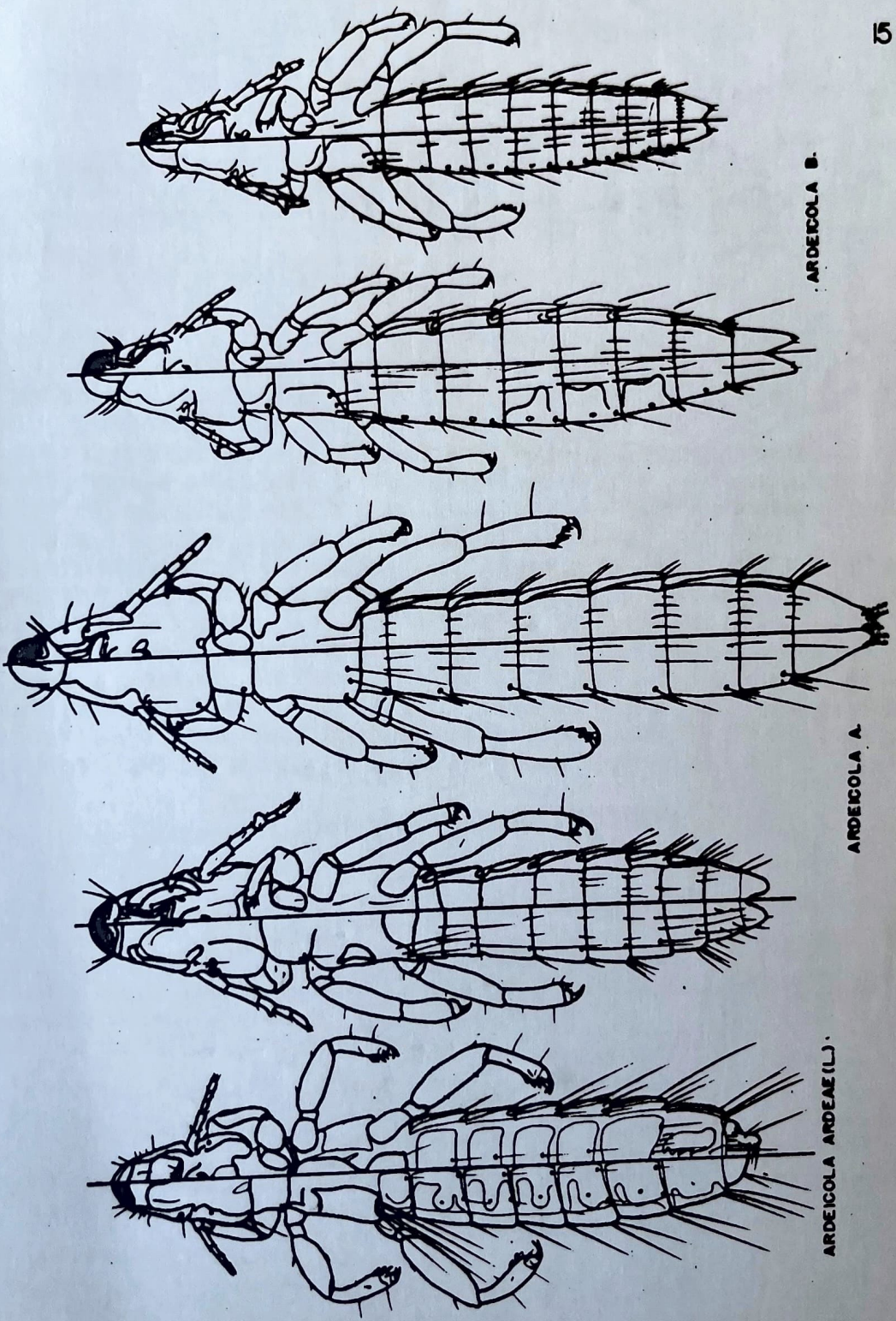
Ardeicola B  
Pl. 15

Specimens collected from the Eastern Least Bittern, Ixobrychus  
exilis exilis (Gmelin).

Similar to above species except size and the more general  
coloration of the paratergites.

Length: male 2.05, female 2.6.





ARDEICOLA B.

ARDEICOLA A.

ARDEICOLA ARDEAE (L).



Ciconiphilus Bedford  
=Anseriphilus Eichler, 1944, Dtsch. ent. Z., 1943:57

Ciconiphilus obscurus (Giebel)

= *laticeps* (Kellogg), 1896 (Colpocephalum). Proc. Calif. Acad. Sci.  
(2), 6:149, pl. 2 fig. 8.

type host: *Casmerodius albus egretta* (Gmelin).  
Specimens examined from the American Egret, *Casmerodius albus egretta* (Gmelin) in the University of Nebraska collection.

Ciconiphilus A

Pl. 50

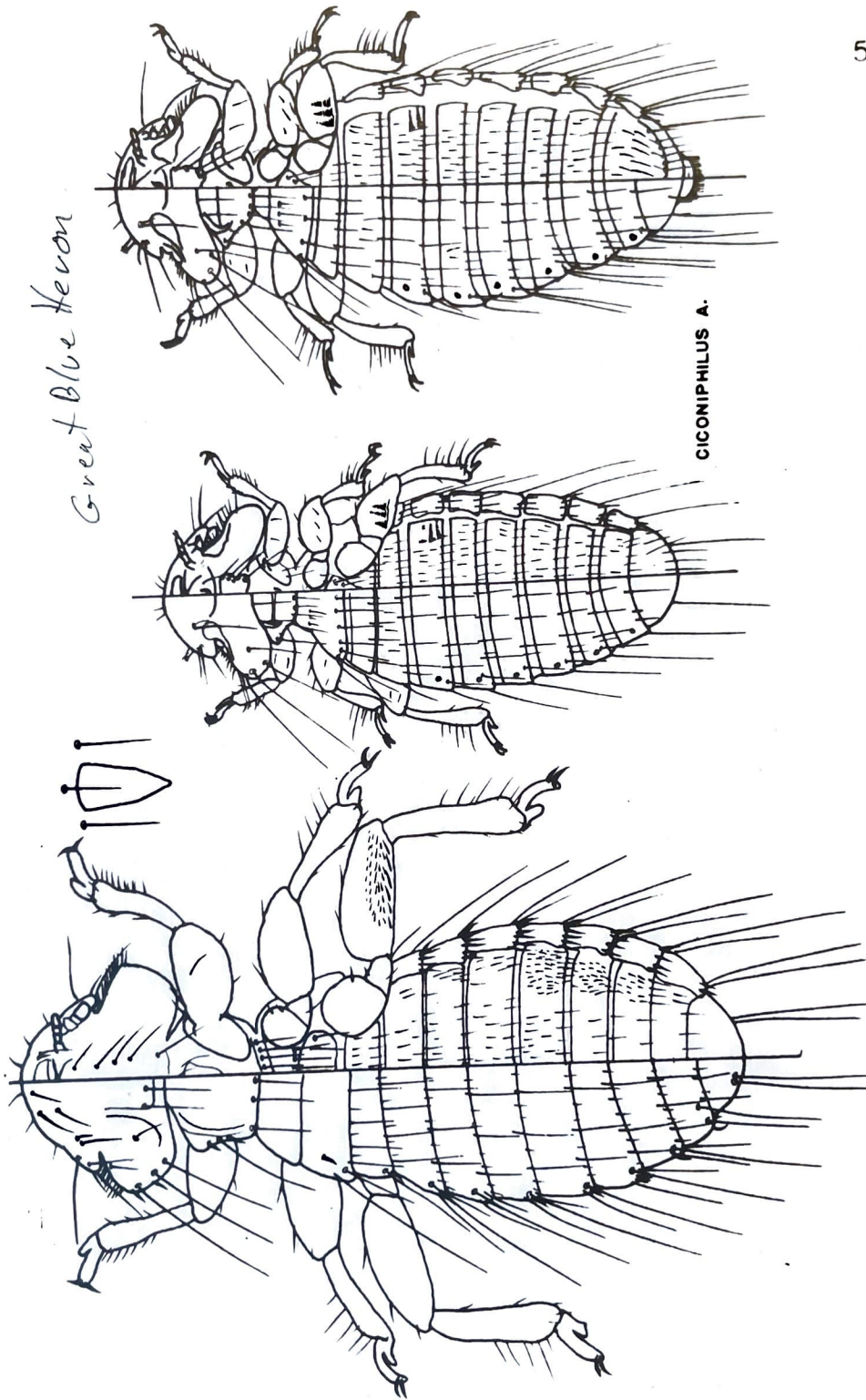
Specimens collected from the Great Blue Heron, *Ardea herodias* L.  
Head: (L:B male .26:.5, female .24:.53); with reduced sclerotization of occipital articulations; gula developed, projecting over prosternum and bearing four long setae.  
Thorax: prosternite reduced to a triangular perforation (furca); mesosternite with one pair submedian setae; metasternite with three pairs of marginal setae. three combs on third femora about equal in female, proximal comb smaller in male.  
Abdomen: pleurites reduced in female, large on male, setaceous; tergites and sternites sclerotized giving banded appearance; sternite III with two full combs in both sexes; clothing setae weak; female vulva emarginate with six marginal setae; anal corona extended, ventral fringe  $\frac{1}{2}$  length of dorsal fringe. Male basal plate reaching middle of segment III, narrow and bifurcate posteriorly; sac small, parameres broad and foliate, penis long and broad. Length: male 1.6mm., female 1.75 mm.

Ciconiphilus B

Pl. 51

Specimens collected from the Least Bittern, *Ixobrychus e. exilis* (Gmelin).  
Head: (L:B male .23:.37)  
Thorax: combs on third femora small and equal.  
Abdomen: male basal plate extending to posterior margin of segment II  
Length: male 1.06 mm.

Collected *Ciconiphilus decimfasciatus* from *Ardea egretta*



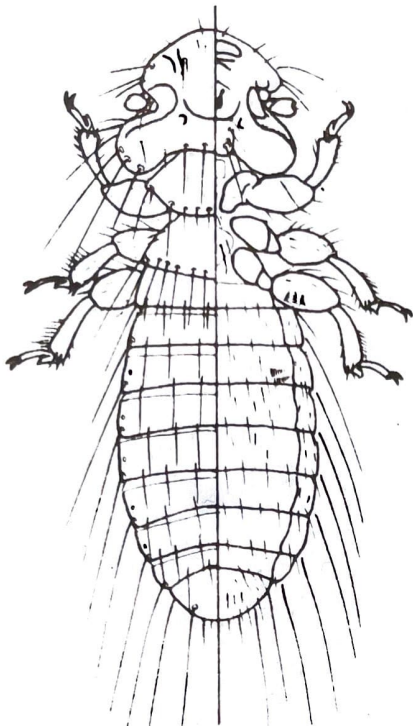
Great Blue Heron

CICONIPHILUS A.

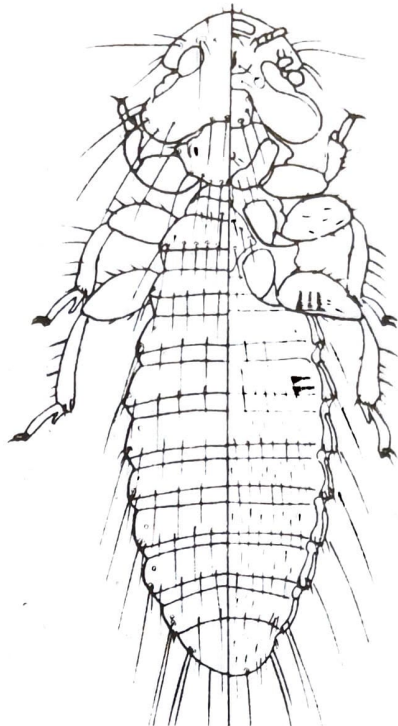
HELEONOMUS A.



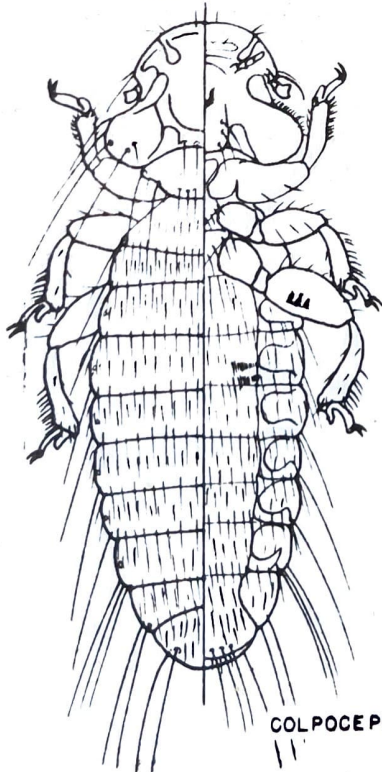
Least Bittern



CICONIPHILUS B.



CICONIPHILUS DECIMFASCIATUS (BOISD. & LACOR.)



COLPOCEPHALUM KELLOGGI OSB.

